

SOHO

Wallcoverings » Commercial Wallcoverings



Brand: **Bolta**

Applications: **Walls**

SOHO

Wallcoverings » Commercial Wallcoverings

Soho is a 137cm wide commercial wallcovering with a subtle large-scale design that's available in 10 colourways. Versatile, durable and easy to clean.

✓ **Bleach Cleanable**

Description	This surprisingly subtle large-scale design blends distressed industrial with a handcrafted plaster look, includes 12 reclaimed colours and companions with Soho Underground.
Composition	Vinyl face on a fabric backing Equivalent to 20oz (452 g/m ²)
Environmental Info	<p>Formaldehyde free</p> <p>Heavy metals free</p> <p>Perfluorooctanoic acid free</p> <p>No solvent inks</p> <p>Low VOC emissions. Any VOCs dissipate quickly (faster than paint) through normal ventilation and have no recognized adverse impact on indoor air quality.</p> <p>Durability means products do not need to be replaced regularly due to wear and tear and being cleanable, vinyl products are ideal for helping keep commercial environments clean of bacteria.</p> <p>Baresque will only deal with vinyl manufacturers that comply with applicable state and federal regulations, provide a factory that is safe and clean for its employees to work in, recycle scrap and inks during the manufacturing process to minimize waste related to production.</p>
Pattern Repeat Size	N/A
Roll Size	137cm wide x 27.4m - Available by the lineal metre
Fire Rating	<p>Tested in accordance with AS ISO 9705 2003 for the purpose of determining the Group Number classification as required by the Building Code of Australia for the control of fire spread on interior wall and ceiling linings.</p> <p>The result achieved was: Classification - Group 2 Specific Extinction - Less than 250m²/kg</p>

Lead Time	<ul style="list-style-type: none">• 2-weeks (approx.) from Wednesday, subject to stock availability.• Additional 1-week for Western Australia.• Express delivery is available subject to a surcharge. Contact Baresque for details and pricing.
-----------	---

Suggested Installation	<p>Reverse hang / overlap and double cut.</p> <p>Baresque recommends and supply Roman brand adhesives and primers.</p>
------------------------	--

Care Instructions	<p>Use cloth with any of the following in preferred order of use:</p> <ol style="list-style-type: none">1: Clear warm water2: Mild solution of liquid detergent and warm water3: Isopropyl Alcohol (a.k.a. rubbing alcohol) <p>Remove any detergent with a clean, damp cloth. Gently pat dry.</p> <p>For more difficult stains, dampen a soft white cloth with a solution of household bleach (10% bleach / 90% water). Rub gently.</p> <p>Rinse with a water dampened cloth to remove bleach concentration.</p> <p>Do not use solvent based or concentrated abrasive cleaning agents, lacquer thinners or nail polish remover as these may cause discolouration over a period of time.</p> <p>Always test in an inconspicuous area first.</p> <p>If care instructions don't deliver the expected results, cease cleaning method immediately and contact Baresque for assistance.</p>
-------------------	---

Warranty	5-year warranty. Visit baresque.com.au/warranty for complete details.
----------	--

Colour & Finish Options

COLOURWAY CARD

COLOURWAY CARD



BB-HH-01 ROOFTOP
FROST



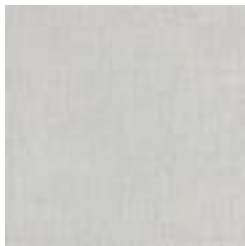
BB-HH-02
SKYSCRAPER BLUE



BB-HH-03 COBALT
CLUB



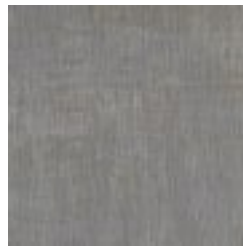
BB-HH-04 SUBWAY
SLATE



BB-HH-05 STREET
CHIC



BB-HH-06
COBBLESTONE



BB-HH-07 GALLERY
GREY



BB-HH-08 HUGO
MOSS



BB-HH-09 CAFFE
CREAM



BB-HH-10 BOHO
BEIGE