

FIJI GARDEN

Wallcoverings » Decorative Wallcoverings



Brand: **York**

FIJI GARDEN

Wallcoverings » Decorative Wallcoverings



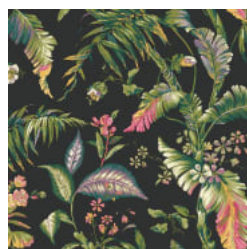
AT7090



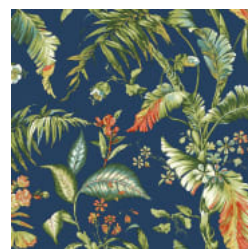
AT7091



AT7092



AT7093



AT7094

FIJI GARDEN

Wallcoverings » Decorative Wallcoverings

Fiji Garden is 68.6cm wide decorative wallcovering with a botanical pattern inspired by humid jungles and breezy beaches. Available in 5 colourways.

Description From deep, humid jungles to breezy, sun-drenched beaches and even tidy formal gardens York's natural collection has plucked leaves from every type of environment. Search Natural for other designs.

Roll Size 68.6cm wide x 8.2m - Available by the full roll only

Composition Vinyl face on paper backing

Pattern Repeat Size 64cm V. (Drop match)

Fire Rating Tested in accordance with AS ISO 9705 2003 for the purpose of determining the Group Number classification as required by the Building Code of Australia for the control of fire spread on interior wall and ceiling linings.

The result achieved was:
Classification - Group 2
Specific Extinction - Less than 250m²/kg

Warranty 2-year warranty. Visit [baresque.com.au/warranty](https://www.baresque.com.au/warranty) for complete details.

Lead Time

- 2-weeks (approx.) from Wednesday, subject to stock availability.
- Additional 1-week for Western Australia.
- Express delivery is available subject to a surcharge. Contact Baresque for details and pricing.

Suggested Installation Non-reverse hang / butt join.

If your order contains several numbered rolls of one single item/ reference, please first install the roll with the highest number, and then continue to install the other rolls in sequence, in descending order.

Measure and cut 3 strip lengths. Add 5 to 10 cm to top and bottom of each strip.

For printed patterns, plan your match from the roll before cutting

Mark each strip coming from the roll on the back and hang in the same sequence

Reverse alternate lengths when instructed to do so by label on the roll

FIJI GARDEN

Wallcoverings » Decorative Wallcoverings

Care Instructions

Always use a clean, white, soft cloth.

Remove liquid stains immediately using a dry cloth. Avoid hard scrubbing.

For tougher stains, dampen the cloth with warm water or a weak dilution of liquid detergent and apply being careful not to soak the material. Always work towards the centre of the stain so as to avoid further spreading.

Remove any detergent with a clean, damp cloth. Gently pat dry.

Always test in an inconspicuous area first.

FIJI GARDEN

Wallcoverings » Decorative Wallcoverings

Colour & Finish Options