

# LOTUS PLAIN PALAZZO

Wallcoverings » Decorative Wallcoverings



Brand: **Omexco**

Collection: **Palazzo**

1300 306 399

[info@baresque.com.au](mailto:info@baresque.com.au)

[baresque.com.au](http://baresque.com.au)

1 of 4

# LOTUS PLAIN PALAZZO

Wallcoverings » Decorative Wallcoverings



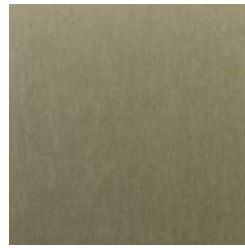
PAL4017 SHIMMER



PAL4027 GOLD



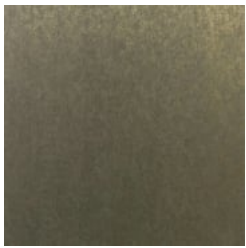
PAL4039 GOLD LEAF



PAL4042 VINTAGE  
GOLD



PAL4059 PEWTER



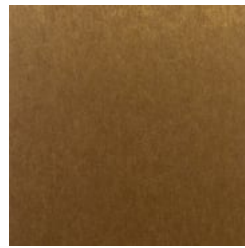
PAL4062 MERCURY  
BRONZE



PAL4076 SPICE



PAL4699  
CHAMPAGNE



PAL4956 RUST



PAL4971 LIGHT GOLD



PAL4993 TAUPE



lotus-plain-palazzo-  
promo-2.jpg

# LOTUS PLAIN PALAZZO

Wallcoverings » Decorative Wallcoverings

Lotus Plain is a 100cm wide decorative wallcovering that unites sophistication and shine in 11 colourways.

|                        |  |
|------------------------|--|
| Description            | Sophistication, elegance and shine united in a enchanting design.  |
| Roll Size              | 100cm wide - Available by the lineal metre   |
| Composition            | Foil print on non-woven backing 196 g/m <sup>2</sup>   |
| Pattern Repeat Size    | N/A  |
| Fire Rating            | <p>Tested in accordance with AS ISO 9705 2003 for the purpose of determining the Group Number classification as required by the Building Code of Australia for the control of fire spread on interior wall and ceiling linings.</p> <p>The result achieved was:<br/>Classification - Group 2<br/>Specific Extinction - Less than 250m<sup>2</sup>/kg</p>   |
| Warranty               | 2-year warranty. Visit <a href="https://www.baresque.com.au/warranty">baresque.com.au/warranty</a> for complete details.   |
| Lead Time              | <ul style="list-style-type: none"><li>• 2-weeks (approx.) from Wednesday, subject to stock availability.</li><li>• Additional 1-week for Western Australia.</li><li>• Express delivery is available subject to a surcharge. Contact Baresque for details and pricing.</li></ul>  |
| Suggested Installation | <p>Reverse hang alternate drops / butt join.</p> <p>Baresque recommends and supplies Roman brand adhesives and primers.</p>  |
| Care Instructions      | <p>Always use a clean, white, soft cloth.</p> <p>Remove liquid stains immediately using a dry cloth. Avoid hard scrubbing.</p> <p>For tougher stains, dampen the cloth with warm water or a weak dilution of liquid detergent and apply being careful not to soak the material. Always work towards the centre of the stain so as to avoid further spreading.</p> <p>Remove any detergent with a clean, damp cloth. Gently pat dry.</p> <p>Always test in an inconspicuous area first.</p> |
| Additional Comments    | Search Palazzo to find other designs that coordinate with Lotus Plain.   |

# LOTUS PLAIN PALAZZO

Wallcoverings » Decorative Wallcoverings

---

## Colour & Finish Options