

# ASCEND

Fabrics » Vinyl and Faux Leather Fabrics

---



Brand: **Concertex**



# ASCEND

Fabrics » Vinyl and Faux Leather Fabrics



ALMOND



ARROYO



COBALT



COCOA



CURRY



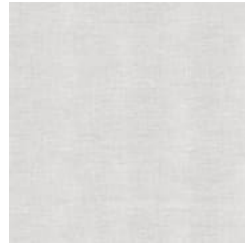
EGGNOG



ETHIOPIA



FENNEL



HAZE



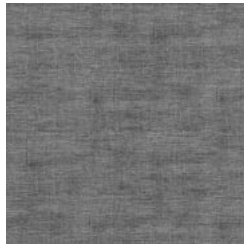
MIDNIGHT



MOSS



NICKEL



PEWTER



REGATTA



RUBY



SHELL



SPICE



SPRING

# ASCEND

Fabrics » Vinyl and Faux Leather Fabrics

Ascend is a 137cm wide vinyl coated fabric that's available in 61 colours and it's anti-bacterial and bleach cleanable for indoor use.

✓ **Bleach Cleanable**

✓ **Moisture Barrier**

✓ **Anti-Bacterial**

**Description** Enduring in its popularity, smart brights enhance an inspiring colour palette. A design classic to define or accent any interior.

**Roll Size** 137cm x Approx 45m - Available by the lineal metre

**Composition** 100% polyurethane with 100% reinforced pollex backing

**Abrasion** 200,000 + double rubs Wyzenbeek

**Pattern Repeat Size** N/A

**Environmental Info**

- PVC free
- Phthalate Free
- DMF Free
- No added fire retardant
- Anti-Bacterial
- Healthier Hospitals compliant
- Complies with CAL01351

**Fire Rating**

- Tested in accordance with AS1530.3
- Spread of Flame Index - 0
- Smoke Developed Index - 5

**Warranty** 2-year warranty. Visit [baresque.com.au/warranty](https://baresque.com.au/warranty) for complete details.

**Lead Time**

- 2-weeks (approx.) from Wednesday, subject to stock availability.
- Additional 1-week for Western Australia.
- Express delivery is available subject to a surcharge. Contact Baresque for details and pricing.

# ASCEND

Fabrics » Vinyl and Faux Leather Fabrics

---

## Care Instructions

Use cloth with any of the following in preferred order of use:

1: Clear warm water

2: Mild solution of liquid detergent and warm water

3: Isopropyl Alcohol (a.k.a. rubbing alcohol)

Do not use solvent based or concentrated abrasive cleaning agents, lacquer thinners, nail polish remover or cleaning agents containing bleach as these may cause discolouration over a period of time.

Remove any detergent with a clean, damp cloth. Gently pat dry.

Always test in an inconspicuous area first. If care instructions don't deliver the expected results, cease cleaning method immediately and contact Baresque for assistance.

---

## Additional Comments

Colour co-ordinates with Ebb N Flow.

---

# ASCEND

**Fabrics** » Vinyl and Faux Leather Fabrics

---

## Colour & Finish Options