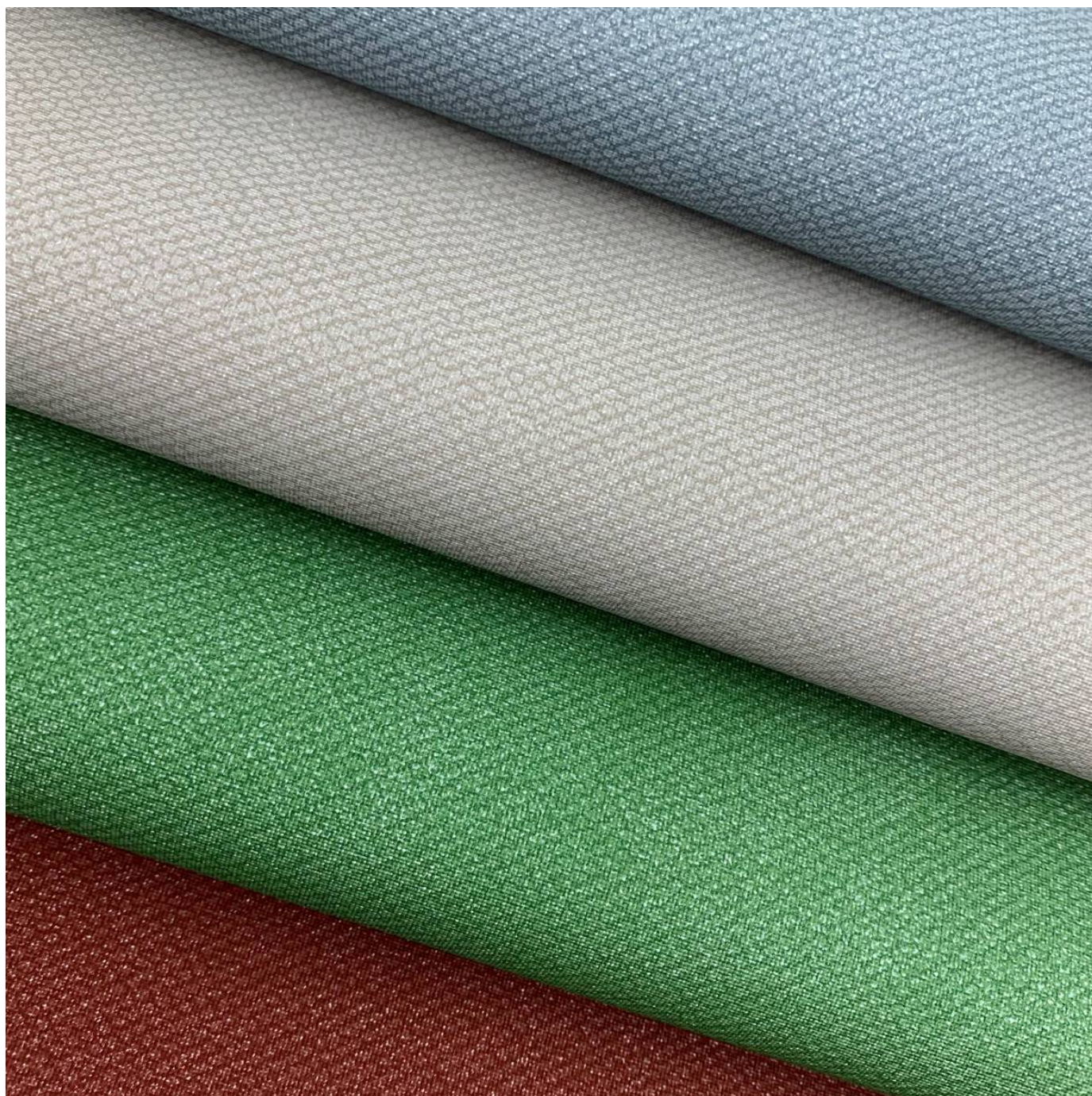


BOUCLE 1011

Fabrics » Vinyl and Faux Leather Fabrics



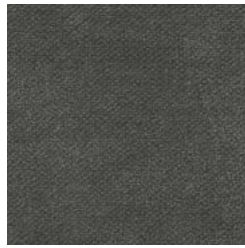
Brand: **Burch**

BOUCLE 1011

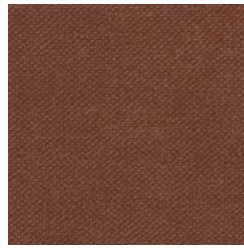
Fabrics » Vinyl and Faux Leather Fabrics



1011250 ALOE



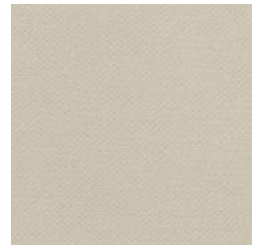
1011267 ARMOR



1011255 BRICK



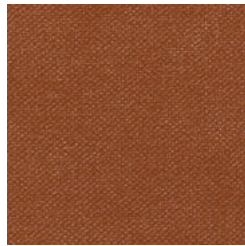
1011252 BUTTERCUP



1011274 CANVAS



1011271 CHINO



1011254 CAYENNE



1011258 DENIM



1011249 EVERGREEN



1011269 GRIZZLY



1011253 HARVEST



1011256 LAVA



1011270 MAPLE



1011262 MIST



1011263 MIRROR



1011265 MOON



1011268 MUSHROOM



1011259 NAUTICAL



1011266 NINJA



1011264 PEBBLE



1011273 SAHARA



1011261 SEAGLASS



1011260 TROPIC



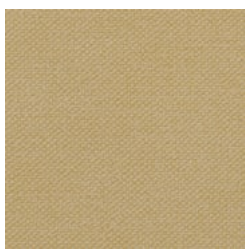
1011251 WILLOW



1011257 WINE

BOUCLE 1011

Fabrics » Vinyl and Faux Leather Fabrics



1011272 MANILA

BOUCLE 1011

Fabrics » Vinyl and Faux Leather Fabrics

Boucle 1011 is a faux leather fabric that's anti-bacterial, water repellent suitable for outdoors that's available in 26 colours.

✓ **Bleach Cleanable**

✓ **Moisture Barrier**

✓ **Phthalate Free**

✓ **Anti-Bacterial**

✓ **Anti-Microbial**

Description This textile inspired faux leather mimicks the loop and loft of a boucl' yarn with it's subtle print. Each colour is dappled in light with the addition of a metallic tip print

Product Code FAB.BOUC.1011

Roll Size 137cm x Approx 50m - Available by the lineal metre

Composition Phthalate free vinyl, 100% polyester backing

Abrasion 250,000+ Double Rubs (Wyzenbeek)

Pattern Repeat Size N/A

Fire Rating Tested in accordance with AS1530.3

Spread of Flame Index - 0

Smoke Developed Index - 5

Warranty 2-year warranty. Visit [baresque.com.au/warranty](https://www.baresque.com.au/warranty) for complete details.

Lead Time

- 2-weeks (approx.) from Wednesday, subject to stock availability.
- Additional 1-week for Western Australia.
- Express delivery is available subject to a surcharge. Contact Baresque for details and pricing.

BOUCLE 1011

Fabrics » Vinyl and Faux Leather Fabrics

Care Instructions

Use cloth with any of the following in preferred order of use:

1: Clear warm water

2: Mild solution of liquid detergent and warm water

3: Isopropyl Alcohol (a.k.a. rubbing alcohol)

Remove any detergent with a clean, damp cloth. Gently pat dry.

For more difficult stains, dampen a soft white cloth with a solution of household bleach (10% bleach / 90% water). Rub gently. Rinse with a water dampened cloth to remove bleach concentration.

Do not use solvent based or concentrated abrasive cleaning agents, lacquer thinners or nail polish remover as these may cause discolouration over a period of time.

Always test in an inconspicuous area first.

If care instructions don't deliver the expected results, cease cleaning method immediately and contact Baresque for assistance.

BOUCLE 1011

Fabrics » Vinyl and Faux Leather Fabrics

Colour & Finish Options