

CHALLENGER

Fabrics » Vinyl and Faux Leather Fabrics



Brand: **Ennis Fabrics**

Applications: **Upholstery**

1300 306 399

info@baresque.com.au

baresque.com.au

1 of 5

CHALLENGER

Fabrics » Vinyl and Faux Leather Fabrics

Challenger is a 140cm wide outdoor upholstery fabric that has the soft feel of a leather with the durability and strength of a vinyl in 40 colours

✓ **Bleach Cleanable**
✓ **Extreme Durability**

✓ **Outdoor Suitable**
✓ **Ultra Performance**

✓ **Moisture Barrier**

Description	Challenger has the soft feel of leather with the durability and strength of vinyl. Available in 40 colours. Endurepel Armour is Ennis's performance finish applied to Challenger to provide tough anti-stain, anti-bacterial and anti-mildew properties. The Armour finish ensures mild soap and water will conveniently clean most stains but is also bleach cleanable when required.
-------------	--

Composition	Vinyl face on a knit polyester backing
-------------	--

Pattern Repeat Size	N/A
---------------------	-----

Roll Size	137cm wide x 27.4m - Available by the lineal metre
-----------	--

Abrasion	1,500,000+ Double Rubs (Wyzenbeek)
----------	------------------------------------

Fire Rating	Tested in accordance with AS1530.3 Spread of Flame Index - 0 Smoke Developed Index - 5
-------------	--

Lead Time	<ul style="list-style-type: none">• 2-weeks (approx.) from Wednesday, subject to stock availability.• Additional 1-week for Western Australia.• Express delivery is available subject to a surcharge. Contact Baresque for details and pricing.
-----------	---

CHALLENGER

Fabrics » Vinyl and Faux Leather Fabrics

Care Instructions

Use cloth with any of the following in preferred order of use:

- 1: Clear warm water
- 2: Mild solution of liquid detergent and warm water
- 3: Isopropyl Alcohol (a.k.a. rubbing alcohol)

Remove any detergent with a clean, damp cloth. Gently pat dry.

For more difficult stains, dampen a soft white cloth with a solution of household bleach (10% bleach / 90% water). Rub gently. Rinse with a water dampened cloth to remove bleach concentration.

Do not use solvent based or concentrated abrasive cleaning agents, lacquer thinners or nail polish remover as these may cause discolouration over a period of time.

Always test in an inconspicuous area first.

If care instructions don't deliver the expected results, cease cleaning method immediately and contact Baresque for assistance.

Warranty

2-year warranty. Visit baresque.com.au/warranty for complete details.

CHALLENGER

Fabrics » Vinyl and Faux Leather Fabrics

Colour & Finish Options

**COLOURWAY
CARD**

COLOURWAY CARD



102 CHAMPAGNE



108 WINE



109 PLUM



14 CHERRY RED



17 GARNET



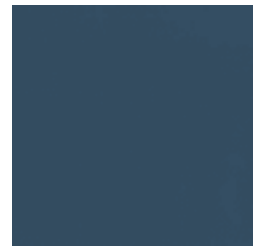
205 SPRING



21 MEADOW



24 DEEP TEAL



303 DENIM BLUE



306 NAVAL BLUE



308 MIDNIGHT BLUE



31 LAGOON



34 SPA



35 ROYAL



37 SMOKEY BLUE



44 PUMPKIN SPICE



54 CITRON



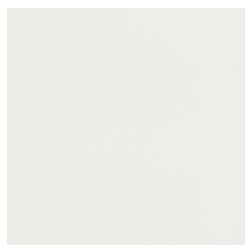
602 MYSTIC WHITE



605 CREAM



609 TAUPE



61 WHITE CAP



63 VANILLA



64 PEARL



66 DIAMOND

1300 306 399

info@baresque.com.au

baresque.com.au

4 of 5

CHALLENGER

Fabrics » Vinyl and Faux Leather Fabrics



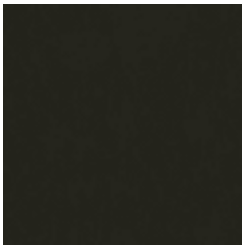
802 MOCHA



804 AMBER



805 BARK



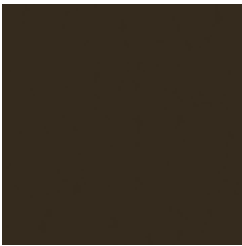
809 CHOCOLATE



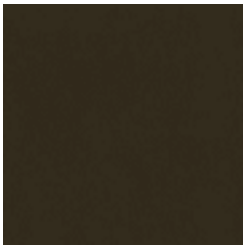
83 TAN



86 EARTH



87 CHESTNUT



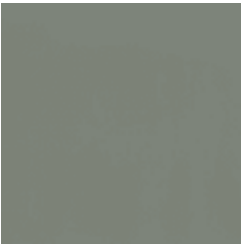
88 TOBACCO



902 SEAGULL



903 FOG



905 STEEL



908 CHINCHILLA



909 RAVEN



91 DOVE



97 SLATE



98 CHARCOAL