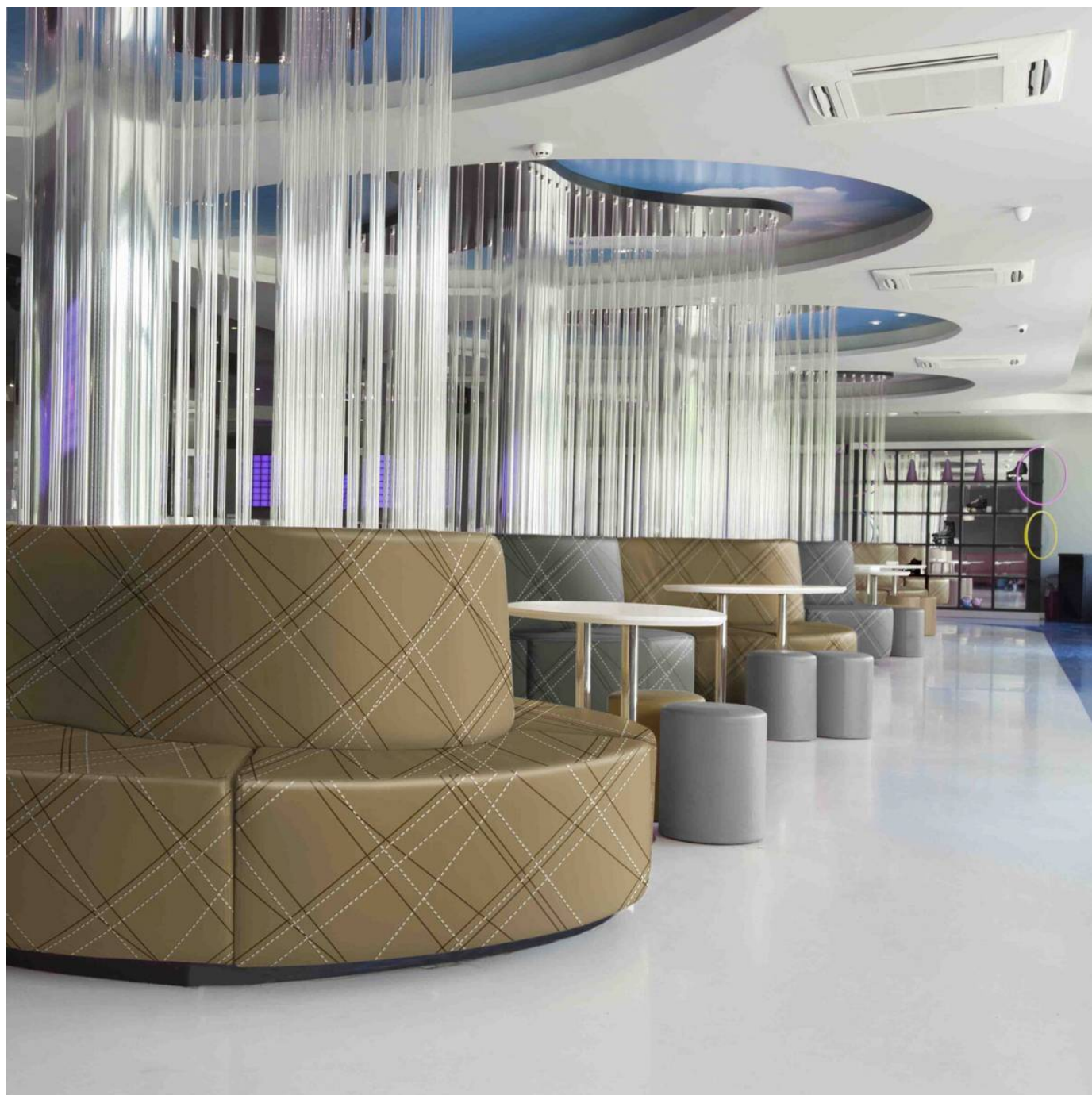


# CROSSCUT

Fabrics » Vinyl and Faux Leather Fabrics



Brand: **Concertex**

# CROSSCUT

Fabrics » Vinyl and Faux Leather Fabrics

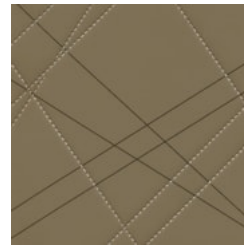
## COLOURWAY CARD



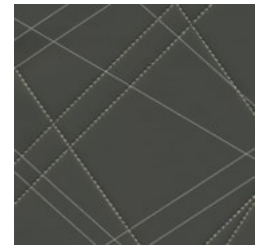
HELIUM



CARBON



GOLD

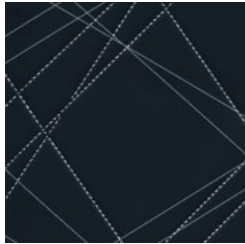


GRAPHITE

COLOURWAY CARD



NICKEL



NITROGEN

# CROSSCUT

Fabrics » Vinyl and Faux Leather Fabrics

Crosscut is a 132cm wide coated fabric ideal for indoors. Bleach cleanable and resistant to stains and marks that can be removed with a dry towel.

✓ **Bleach Cleanable**

✓ **Moisture Barrier**

✓ **Anti-Bacterial**

Roll Size 137cm x Approx 55m - Available by the lineal metre

Composition 100% polyurethane on a 100% polyester backing

Abrasion 100,000 + double rubs Wyzenbeek

Pattern Repeat Size 51cm V

Environmental Info

- PVC free
- Phthalate Free
- DMF Free
- No added fire retardant
- Anti-Bacterial
- Healthier Hospitals compliant
- Complies with CAL01351

Fire Rating

- Tested in accordance with AS1530.3
- Spread of Flame Index - 0
- Smoke Developed Index - 5

Warranty 2-year warranty. Visit [baresque.com.au/warranty](https://baresque.com.au/warranty) for complete details.

Lead Time

- 2-weeks (approx.) from Wednesday, subject to stock availability.
- Additional 1-week for Western Australia.
- Express delivery is available subject to a surcharge. Contact Baresque for details and pricing.

# CROSSCUT

Fabrics » Vinyl and Faux Leather Fabrics

---

## Care Instructions

Most stains and ballpoint pen marks can be removed with a clean dry towel.

Wipe material with a clean, soft cloth dampened with a mild solution of liquid detergent and warm water. Repeat using only clean water, then dry with a lint free cloth.

Avoid using wax polishes, solvents or concentrated abrasives.

For more difficult stains, dampen a soft white cloth with a solution of household bleach (5:1). Rub gently. Rinse with a water dampened cloth to remove bleach concentration.

Always test in an inconspicuous area first. If care instructions don't deliver the expected results, cease cleaning method immediately and contact Baresque for assistance.

---

## Additional Comments

Crosscut should only be stapled. Do not use adhesives on this product as adhesives seeping into the padding will deform the natural shape.

---

# CROSSCUT

**Fabrics** » Vinyl and Faux Leather Fabrics

---

## Colour & Finish Options