

GLEAM BEYOND

Fabrics » Vinyl and Faux Leather Fabrics



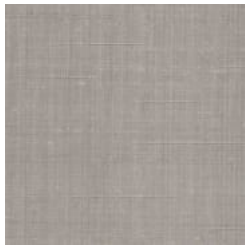
Brand: **Concertex**

GLEAM BEYOND

Fabrics » Vinyl and Faux Leather Fabrics



AUTUMN



FROST



FUDGE



HARBOUR



MOONBEAM



MOREL



MUSHROOM



NIGHT



OYSTER



PARSLEY



SEAL



SECO



SHADOW

GLEAM BEYOND

Fabrics » Vinyl and Faux Leather Fabrics

Gleam-Beyond is a 137cm wide vinyl coated fabric that's anti-bacterial and easily cleanable with warm water. available in 13 colours

✓ **Bleach Cleanable**

✓ **Moisture Barrier**

Roll Size 137cm x Approx 50m - Available by the lineal metre

Composition Vinyl on a polyester backing

Abrasion 500,000 + double rubs Wyzenbeek

Pattern Repeat Size N/A

Environmental Info
PVC/Phthalates free
No added fire retardant
Healthier Hospitals compliant

Fire Rating
Tested in accordance with AS1530.3
Spread of Flame Index - 0
Smoke Developed Index - 5

Warranty 2-year warranty. Visit [baresque.com.au/warranty](https://www.baresque.com.au/warranty) for complete details.

Lead Time

- 2-weeks (approx.) from Wednesday, subject to stock availability.
- Additional 1-week for Western Australia.
- Express delivery is available subject to a surcharge. Contact Baresque for details and pricing.

GLEAM BEYOND

Fabrics » Vinyl and Faux Leather Fabrics

Care Instructions

Use cloth with any of the following in preferred order of use:

- 1: Clear warm water
- 2: Mild solution of liquid detergent and warm water
- 3: Isopropyl Alcohol (a.k.a. rubbing alcohol)

Remove any detergent with a clean, damp cloth. Gently pat dry.

For more difficult stains, dampen a soft white cloth with a solution of household bleach (10% bleach / 90% water). Rub gently. Rinse with a water dampened cloth to remove bleach concentration.

Do not use solvent based or concentrated abrasive cleaning agents, lacquer thinners or nail polish remover as these may cause discolouration over a period of time.

Always test in an inconspicuous area first.

If care instructions don't deliver the expected results, cease cleaning method immediately and contact Baresque for assistance.

GLEAM BEYOND

Fabrics » Vinyl and Faux Leather Fabrics

Colour & Finish Options