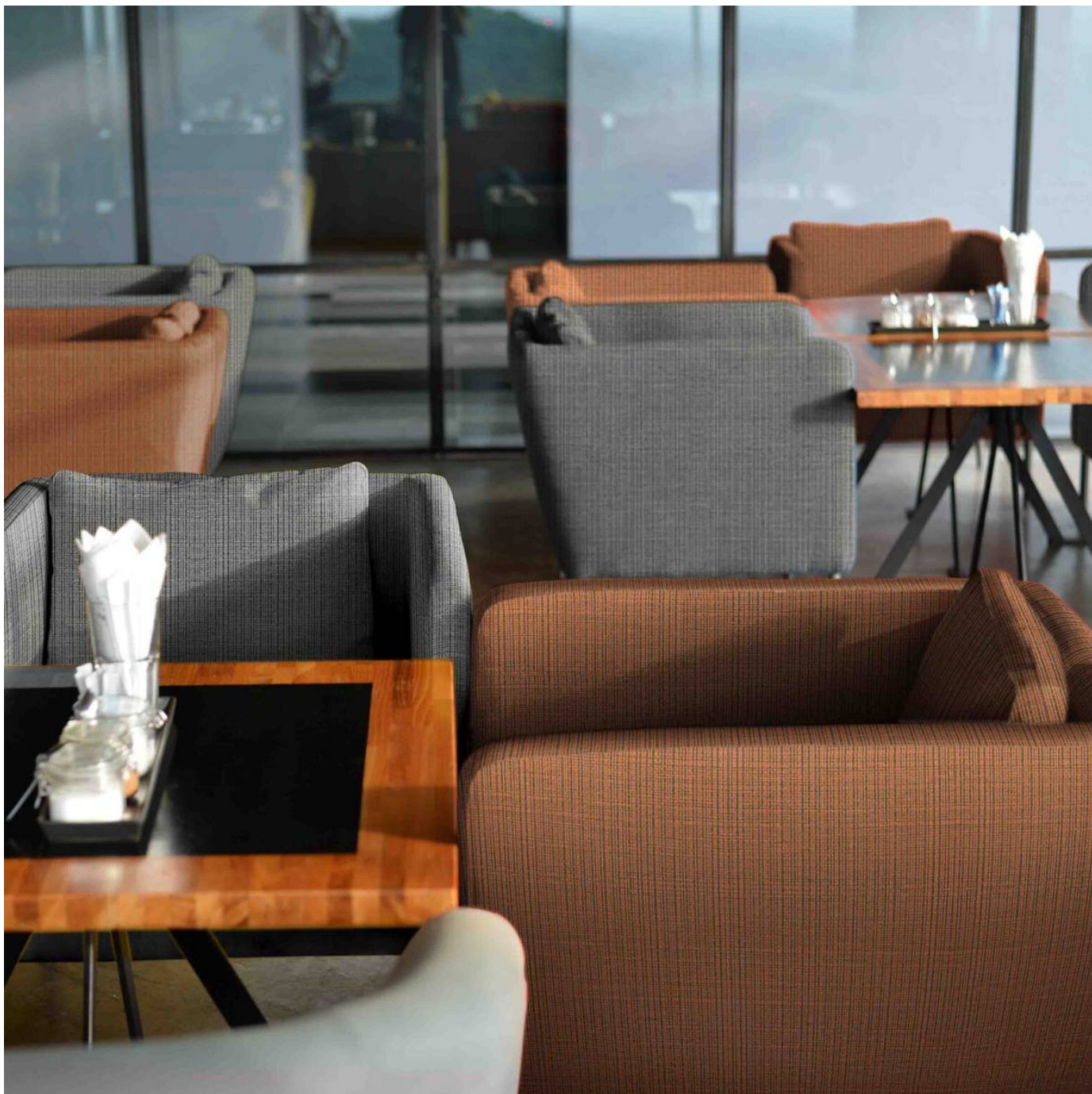


# HAMPSHIRE

Fabrics » Vinyl and Faux Leather Fabrics



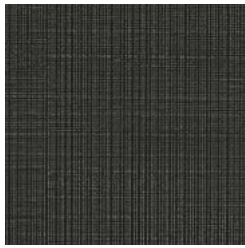
Brand: **Concertex**

# HAMPSHIRE

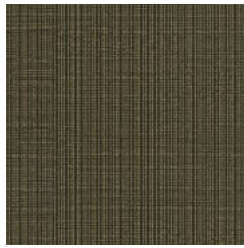
Fabrics » Vinyl and Faux Leather Fabrics

---

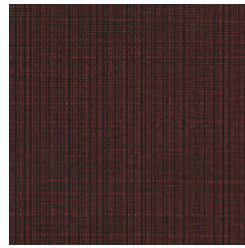
## COLOURWAY CARD



CHARCOAL



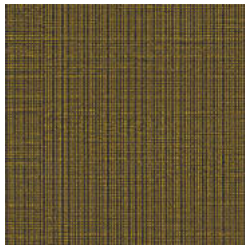
COCOA



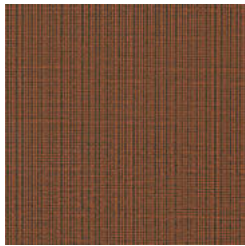
HILARIA



JADE



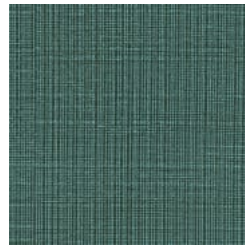
NECTOR



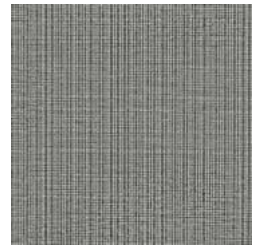
PAPAYA



PORTER



SURF



WHISTLE

# HAMPSHIRE

Fabrics » Vinyl and Faux Leather Fabrics

Hampshire is a 137cm wide vinyl coated fabric that's anti-bacterial, bleach cleanable and available in 9 colours

✓ Bleach Cleanable

✓ Ultra Performance

✓ Moisture Barrier

✓ Anti-Bacterial

Roll Size 140cm x Approx 45m - 55m - Available by the lineal metre.

Composition Silicone/Polyurethane on a 100% Pollex Backing

Abrasion 200,000 + double rubs Wyzenbeek

Pattern Repeat Size N/A

Environmental Info  
PVC free  
Phthalate Free  
DMF Free  
No added fire retardant  
Anti-Bacterial  
Healthier Hospitals compliant  
Complies with CAL01351

Fire Rating  
Tested in accordance with AS1530.3  
Spread of Flame Index - 0  
Smoke Developed Index - 5

Warranty 2-year warranty. Visit [baresque.com.au/warranty](https://baresque.com.au/warranty) for complete details.

Lead Time

- 2-weeks (approx.) from Wednesday, subject to stock availability.
- Additional 1-week for Western Australia.
- Express delivery is available subject to a surcharge. Contact Baresque for details and pricing.

# HAMPSHIRE

Fabrics » Vinyl and Faux Leather Fabrics

---

## Care Instructions

Use cloth with any of the following in preferred order of use:

- 1: Clear warm water
- 2: Mild solution of liquid detergent and warm water
- 3: Isopropyl Alcohol (a.k.a. rubbing alcohol)

Remove any detergent with a clean, damp cloth. Gently pat dry.

For more difficult stains, dampen a soft white cloth with a solution of household bleach (10% bleach / 90% water). Rub gently. Rinse with a water dampened cloth to remove bleach concentration.

Do not use solvent based or concentrated abrasive cleaning agents, lacquer thinners or nail polish remover as these may cause discolouration over a period of time.

Always test in an inconspicuous area first.

If care instructions don't deliver the expected results, cease cleaning method immediately and contact Baresque for assistance.

---

# HAMPSHIRE

**Fabrics** » Vinyl and Faux Leather Fabrics

---

## Colour & Finish Options