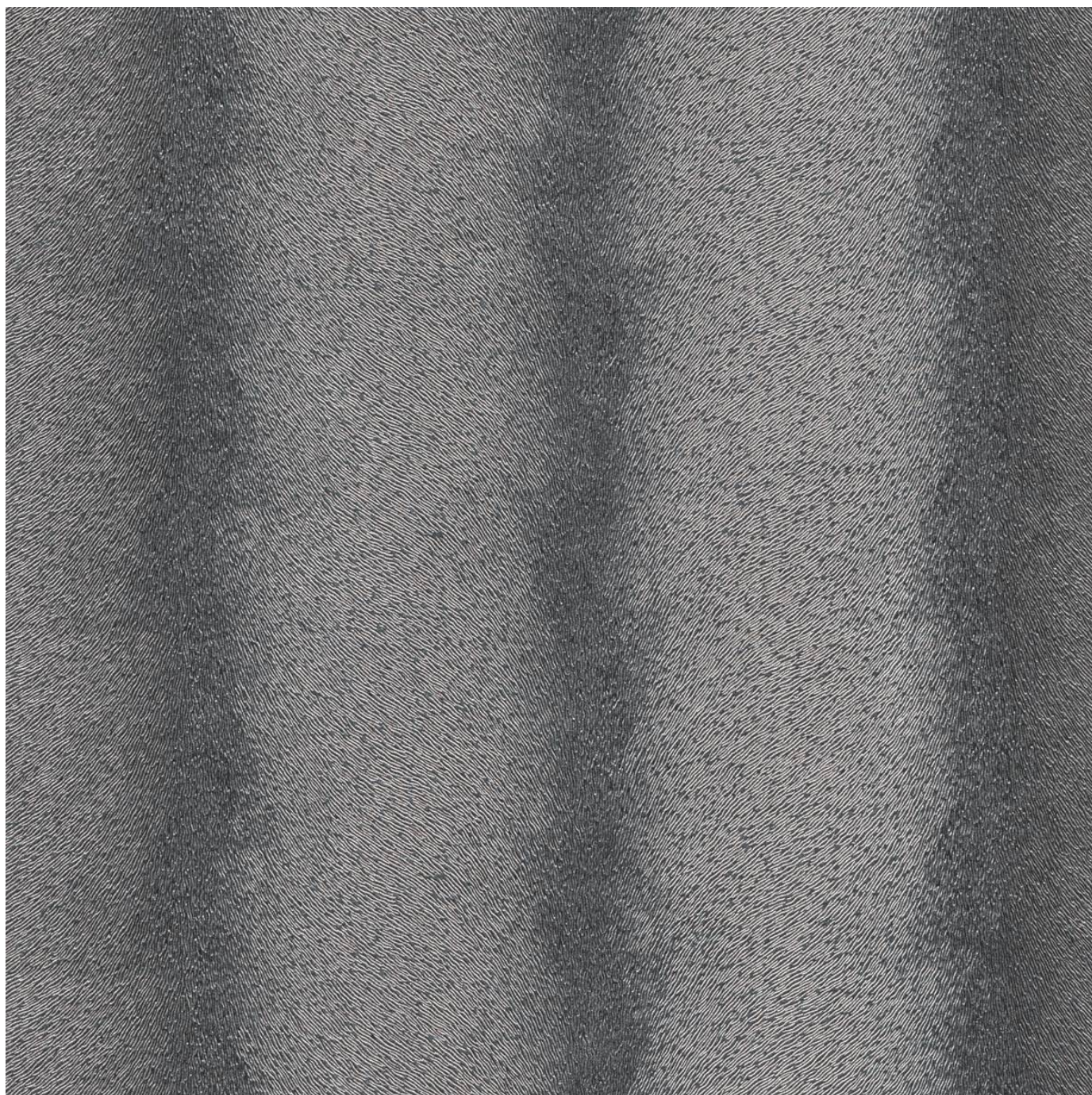


LUMINARY

Fabrics » Vinyl and Faux Leather Fabrics



Brand: **Concertex**

1300 306 399

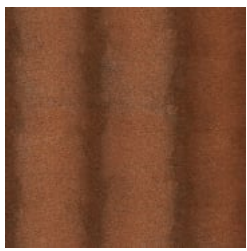
info@baresque.com.au

baresque.com.au

1 of 5

LUMINARY

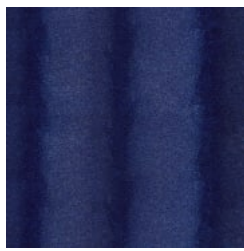
Fabrics » Vinyl and Faux Leather Fabrics



AUBURN



CINDER



DEEP OCEAN



FLINT



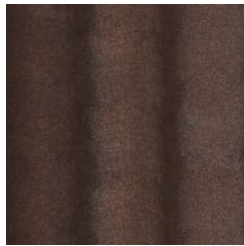
GOLD RUSH



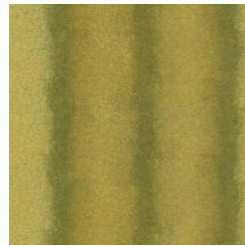
ICE



ILLUSION



JAVA



MARGARITA



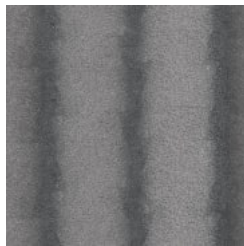
MOCHA



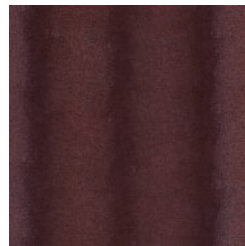
OYSTER



PARSLEY



PEWTER



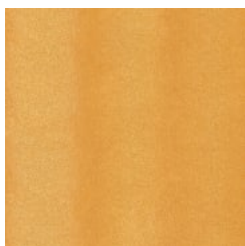
ROUGE



SADDLE



SAND



SUNBURST

LUMINARY

Fabrics » Vinyl and Faux Leather Fabrics

Luminary is a 137cm wide vinyl coated fabric that's anti-bacterial and bleach cleanable available in 17 colours

✓ Bleach Cleanable

✓ Moisture Barrier

✓ Anti-Bacterial

Roll Size

137cm x 45.7m - Available by the lineal metre

Composition

100% polyurethane on a 100% reinforced Pollex backing

Abrasion

200,000 + double rubs Wyzenbeek

Pattern Repeat Size

18.8cm V / 10.4cm H

Environmental Info

PVC free

Phthalate Free

DMF Free

No added fire retardant

Anti-Bacterial

Healthier Hospitals compliant

Complies with CAL01351

Fire Rating

Tested in accordance with AS1530.3

Spread of Flame Index - 0

Smoke Developed Index - 5

Warranty

2-year warranty. Visit [baresque.com.au/warranty](https://www.baresque.com.au/warranty) for complete details.

Lead Time

- 2-weeks (approx.) from Wednesday, subject to stock availability.
- Additional 1-week for Western Australia.
- Express delivery is available subject to a surcharge. Contact Baresque for details and pricing.

Care Instructions

MAINTENANCE

Removal of dust and stains will keep your upholstery looking good and performing well for years.

Any stains should be addressed promptly since, the longer the stain remains, the more difficult it will be to remove and untreated stains may become permanent. For very large or difficult stains, we recommend that you contact a reputable, professional upholstery cleaning

company.

REMOVAL OF STAINS

The type of stain you are trying to remove will dictate the type of cleaner to be used. Water-based stains should be removed with water-based cleaners. Oil-based stains should be removed with a water-free, dry cleaning solvent. A water/bleach solution can also

be used for more challenging stains.

If the stain is wet, gently blot away any extra fluid that might remain on the fabric. If a stain still remains and additional cleaning is required, a cleaner can be applied lightly to a soft cloth and gently worked into the stained area.

The cleaner can then be wiped away using a damp cloth. Use clean water to rinse away any remaining cleaning solution. We recommend cleaning of stains with a light application of the cleaning solution. The process can be repeated if additional cleaning is required.

Avoid heavy application of cleaning agents and saturation of the fabric as this can cause damage and leave marks.

If the stain is dry, a soft bristle brush can be used to gently remove any remaining accumulated matter. Any loose material can then be vacuumed away and, if a stain remains, cleaning can then be performed as described above.

If a stain cannot be removed by these methods, a solution of 10 parts water to 1 part bleach can be used. Never use full strength bleach.

Apply the solution to the stained area and allow it to linger on the fabric for approximately 15 minutes. The bleach solution must be thoroughly rinsed away with clean water and dried using a soft towel. Be sure to remove all bleach solution as any that is allowed to remain may damage the fabric and shorten the life of the product.

Any cleaning agent should always be tested on an area of the piece that is not readily visible before being applied to the stained area.

LUMINARY

Fabrics » Vinyl and Faux Leather Fabrics

Colour & Finish Options