

METEOR XOREL

Wallcoverings » Commercial Wallcoverings



Brand: **Xorel**

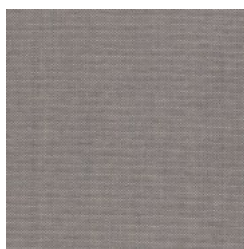
METEOR XOREL

Wallcoverings » Commercial Wallcoverings

COLOURWAY CARD



6427 2000



6427 2001



6427 2002



6427 2004



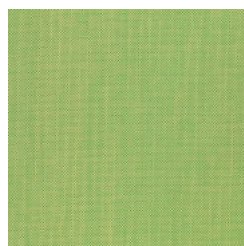
6427 2005



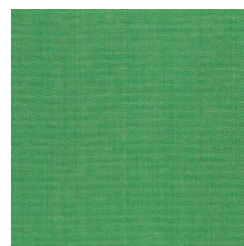
6427 2006



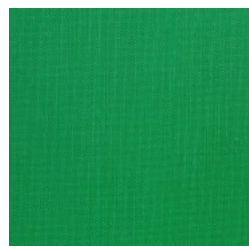
6427 2007



6427 2008



6427 2009



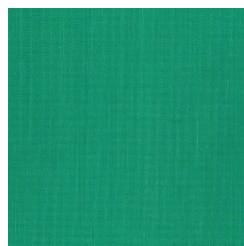
6427 2010



6427 2011



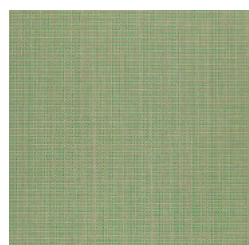
6427 2012



6427 2013



6427 2014



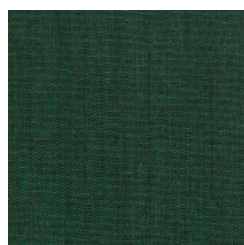
6427 2015



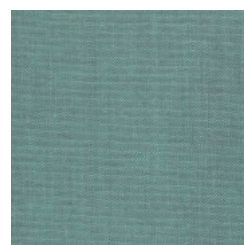
6427 2016



6427 2017



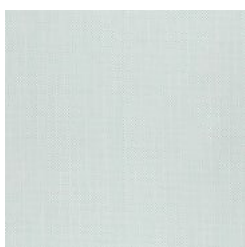
6427 2018



6427 2019



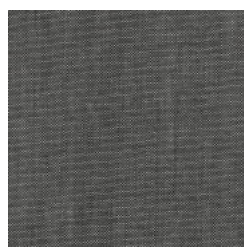
6427 2020



6427 2021



6427 2022



6427 2023



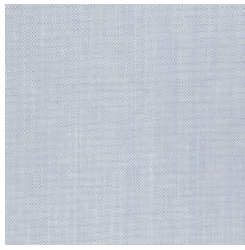
6427 2024

METEOR XOREL

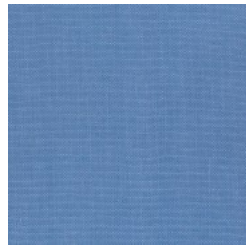
Wallcoverings » Commercial Wallcoverings



6427 2025



6427 2026



6427 2027



6427 2028



6427 2029



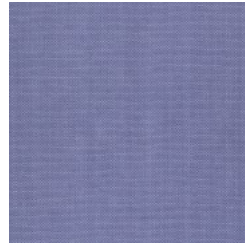
6427 2030



6427 2031



6427 2032



6427 2033



6427 2034



6427 2035



6427 2036



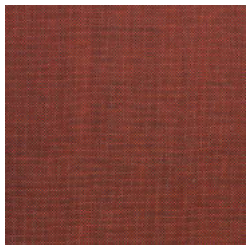
6427 2037



6427 2038



6427 2039



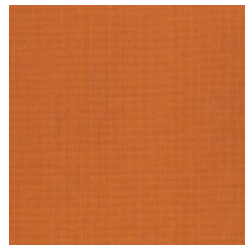
6427 2040



6427 2041



6427 2042



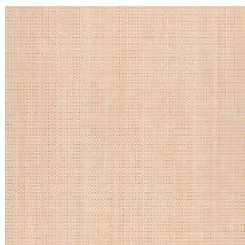
6427 2043



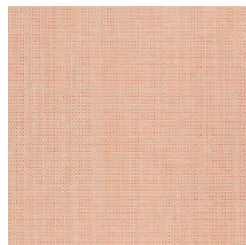
6427 2044



6427 2045



6427 2046



6427 2047



6427 2048



6427 700

METEOR XOREL

Wallcoverings » Commercial Wallcoverings



6427 703



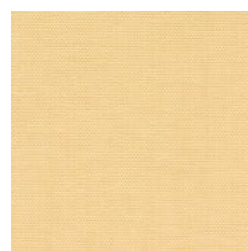
6427 705



6427 706



6427 711



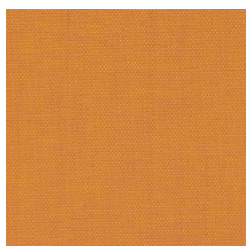
6427 712



6427 717



6427 718



6427 721



6427 724



6427 726



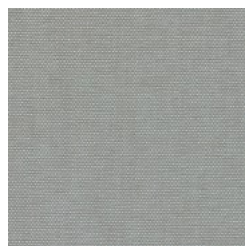
6427 727



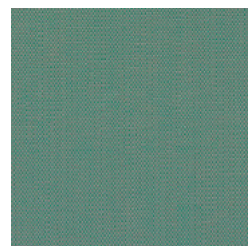
6427 728



6427 734



6427 735



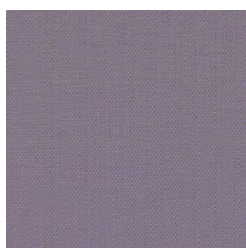
6427 737



6427 739



6427 742



6427 747



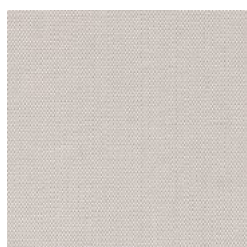
6427 750



6427 751



6427 752



6427 753



6427 759



6427 761



6427 764

METEOR XOREL

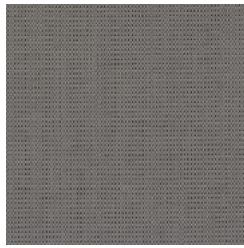
Wallcoverings » Commercial Wallcoverings



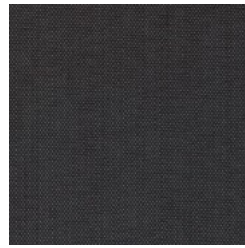
6427 765



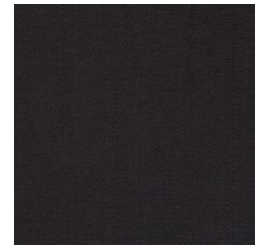
6427 766



6427 768



6427 769



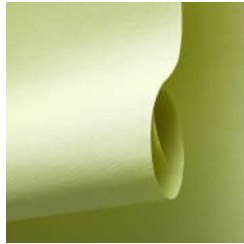
6427 770



meteor-promo-4.jpg



meteor-promo-7.jpg



meteor-promo-8.jpg

METEOR XOREL

Wallcoverings » Commercial Wallcoverings

Meteor is a standard woven pattern that comes in a range of 80 colours making it the perfect solution to evoke any space's desired voice through hue.

- ✓ Bleach Cleanable
- ✓ High Stain Resistance
- ✓ Solution Dyed Yarns
- ✓ Environmentally Friendly
- ✓ Phthalate Free
- ✓ Ultra Performance
- ✓ Extended Warranty
- ✓ PVC-Free
- ✓ Acoustic

Description

Xorel is a technologically advanced and environmentally sound problem-solving woven textile which enables a wide range of design possibilities to be realized. All the high-performance characteristics of Xorel emanate from the yarn. Simply put, nothing is added to the woven product to enhance performance, no finishes, no coatings.

FEATURES + BENEFITS:

- * Bleach cleanable, anti-microbial
- * 7 Year Warranty
- * Super durable - 1,000,000 + double rubs
- * Multi-tasking

Xorel is a registered trademark and license to distribute is granted by permission of Carnegie Fabrics Inc. USA.

Product Code

XRL.METEOR

Roll Size

Unbacked - 142cm
X-Protect Wall - 132cm
X-Protect Sit - 137cm
Acrylic Backed - 137cm x Approx 60m - available by the lineal metre.
MINIMUM ORDER for X-Protect Sit - 5 lineal metres
MINIMUM ORDER for Acrylic Backed - 15 lineal metres

Composition

100% Xorel. Available Unbacked (for wrapped panels) or with X-Protect Wall (for wallcoverings), X-Protect Sit (for upholstery) or acrylic (for wrapped panels with glue) backings

Abrasion

1,000,000 + double rubs Wyzenbeek

Pattern Repeat Size

N/A

METEOR XOREL

Wallcoverings » Commercial Wallcoverings

Environmental Info

Xorel's high performance does not come at an environmental cost as it achieves high standards for sustainability.

All testing/certifying is done by third party independent organizations including:- Scientific Certification Systems (SCS) – Indoor Air Quality (GOLD)- Vincotte – Biobased Content (LEVELS 3/4)- USDA Biobased – Meeting Government Biobased Regulations (PREFERRED)- Cradle to Cradle Institute – Full Lifecycle Assessment (GOLD)- NSF – FACTS certification (NSF 336)

Xorel products can also help a project achieve multiple credits under LEED for commercial interiors:Material Sourcing (Rapidly Renewable Content)Indoor Air Quality (SCS Indoor Advantage Gold)Material Optimization (Cradle to Cradle Gold)Material Transparency (Healthy Product Declaration)

Fire Rating

As a wallcovering - Tested in accordance with AS/NZS 3837 and AS 5637.1:2015 for the purposes of Group Number Classification as specified in the NCC Volume One Specification C1.10 Clause 4

Classification - Group 1

Specific Extinction - Less than 250 m²/kg

As a fabric - Tested in accordance with AS1530.3

Spread of Flame Index - 0

Smoke Developed Index - 5

Warranty

7-year warranty. Visit [baresque.com.au/warranty](https://www.baresque.com.au/warranty) for complete details.

Lead Time

- 5-weeks (approx) from Wednesday subject to stock availability.
 - Additional 1-week for Western Australia.
 - Unbacked 2-3 weeks.
 - Express delivery is available subject to a surcharge. Contact Baresque for details and pricing
-

Suggested Installation

As a wallcovering - trim selvedge and butt join.

Download the Installation Instructions for details.

Baresque recommends and supply Roman brand adhesives and primers.

METEOR XOREL

Wallcoverings » Commercial Wallcoverings

How to Specify

1. Colour

2. Backing - Available Unbacked or with X-Protect Wall, X-Protect Sit or Acrylic backings.

Check out the Xorel Backings guide on the [DOWNLOAD](#) tab.

Care Instructions

Xorel yarns are non-absorbent; dust and stains cannot penetrate them.

Regular maintenance will keep the fabric looking new for many years. Periodic vacuuming will remove dust that may settle between the yarns.

Most stains that dry between the yarns or on the surface can be eliminated by wiping the fabric with a cloth moistened with hot tap water. Some stains may require additional treatment. These stains can be cleaned with a variety of water or solvent based cleaners.

When using solvent based cleaners on paperbacked Xorel fabric, test on a small area first. Residue from these cleaners must be removed with hot water and a clean sponge. After cleaning, towel dry.

Hardened solids can be removed with stiff brush or a sharp-edged instrument without damaging the fabric. However, the brush or sharp instrument should not be used close to seams.

Hospital grade disinfectant cleaners can be safely used on Xorel fabrics. Always follow the directions for the specific brand being used as contact times may vary depending on the product. Diluted bleach solution (up to 40%) can also be used on Xorel for disinfecting purposes.

Always test in an inconspicuous area first. If care instructions don't deliver the expected results, cease cleaning method immediately and contact Baresque for assistance.

Additional Comments

Xorel is a multi-tasking material being equally suited as a direct applied wallcovering, wrapped panel material or as an upholstery solution. In addition, it is notable for its versatility in a wide range of projects; wherever both beauty and performance are required.

X Protect Wall prevents stains and other substances from reaching the foam or paper backing.

X Protect Sit increases cushion protection and enhances Xorel's superior performance attributes.

With X Protect, Xorel is 100% moisture repellent.

METEOR XOREL

Wallcoverings » Commercial Wallcoverings

Colour & Finish Options