

# MORGAN PRO

Fabrics » Vinyl and Faux Leather Fabrics



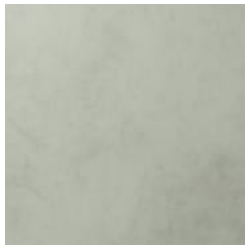
Brand: **Panaz**

# MORGAN PRO

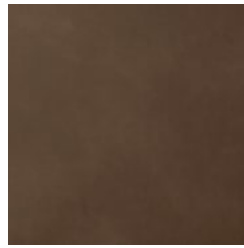
Fabrics » Vinyl and Faux Leather Fabrics

## COLOURWAY CARD

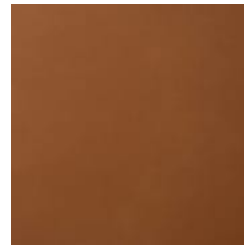
COLOURWAY CARD



005 CHALK



703 MINK



744 SADDLE



801 TAN



803 MAHOGANY



807 MUSHROOM



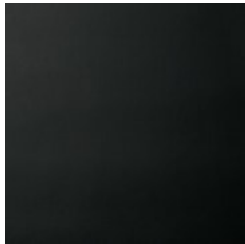
814 ESPRESSO



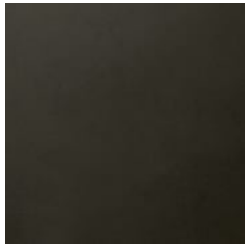
815 BUFF



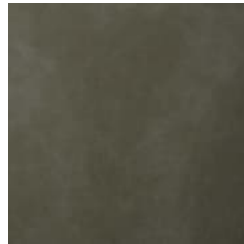
826 TAUPE



900 BLACK



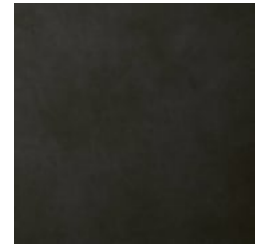
903 CHARCOAL



904 PEWTER



925 PUTTY



953 GUN METAL



# MORGAN PRO

Fabrics » Vinyl and Faux Leather Fabrics

Morgan is a 140cm wide upholstery with a realistic leather look that's available in 15 warm colourways.

✓ **Moisture Barrier**

✓ **Waterproof**

✓ **Stain Resistant**

✓ **Phthalate Free**

**Description** Morgan is an amazingly realistic leather look - in both looks and feel. The colour palette is warm and engaging making you want to sink into the oversize arm chair or lounge it is ideally suited to.

**Product Code** FAB.MORGAN

**Roll Size** 140cm x 20m - Available by the lineal metre

**Composition** Vinyl face on a cotton / polyester backing

**Abrasion** 100,000+ double rubs (Wyzenbeek)

**Pattern Repeat Size** N/A

**Fire Rating** This product can be treated with a fire retardant that will ensure it meets Australian Standard 1530.3. Contact Baresque for details.

**Warranty** 2-year warranty. Visit [baresque.com.au/warranty](https://baresque.com.au/warranty) for complete details.

**Lead Time**

- 2-weeks (approx.) from Wednesday, subject to stock availability.
- Additional 1-week for Western Australia.
- Express delivery is available subject to a surcharge. Contact Baresque for details and pricing.

# MORGAN PRO

Fabrics » Vinyl and Faux Leather Fabrics

---

## Care Instructions

Use cloth with any of the following in preferred order of use

- \* Clear warm water
- \* Mild solution of liquid detergent and warm water
- \* Isopropyl Alcohol (a.k.a. rubbing alcohol)

Do not use solvent based or concentrated abrasive cleaning agents, lacquer thinners, nail polish remover or cleaning agents containing bleach as these may cause discolouration over a period of time.

Remove any detergent with a clean, damp cloth. Gently pat dry.

Always test in an inconspicuous area first. If care instructions don't deliver the expected results, cease cleaning method immediately and contact Baresque for assistance.

---

# MORGAN PRO

**Fabrics** » Vinyl and Faux Leather Fabrics

---

## Colour & Finish Options