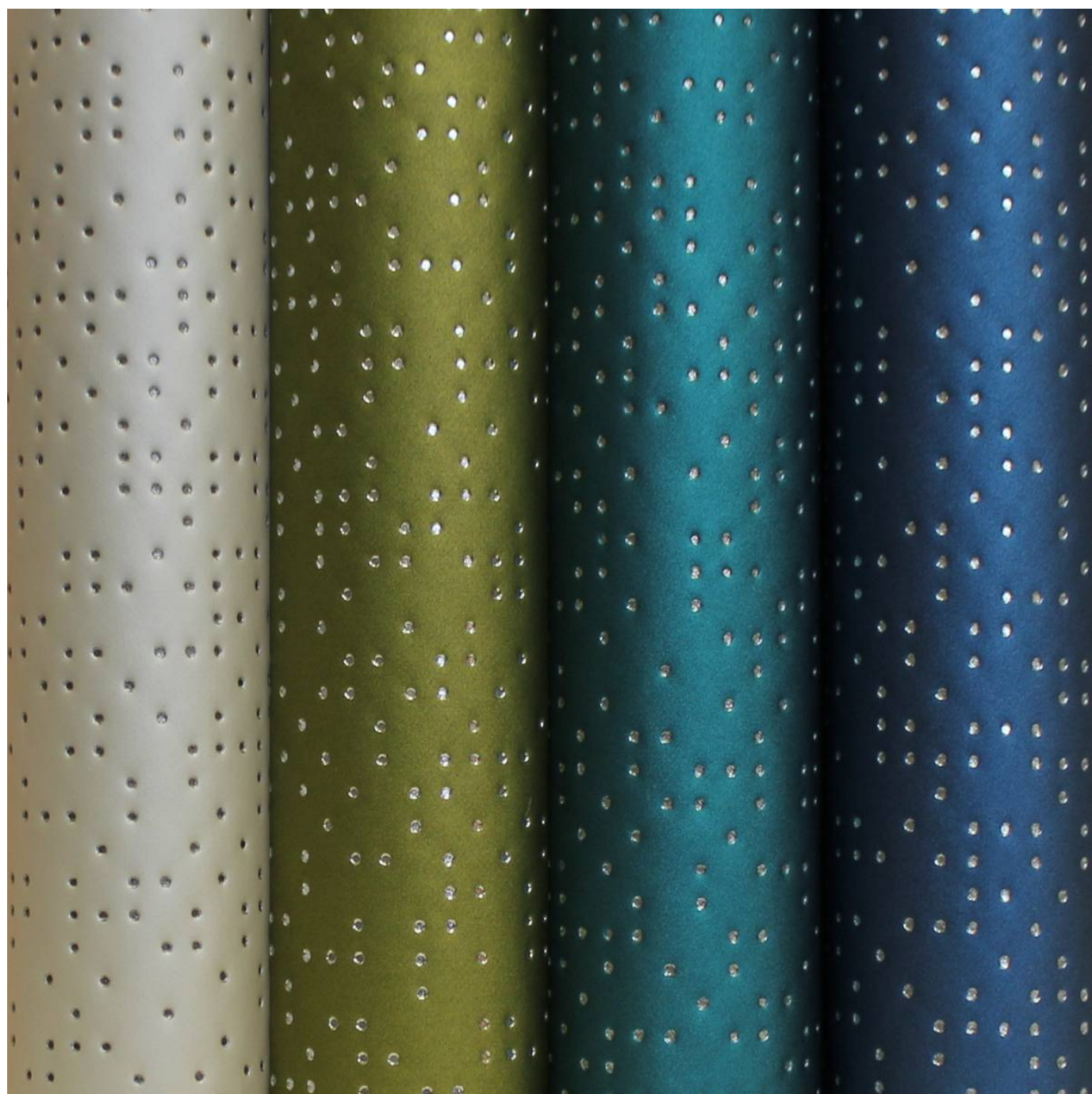


MORSE CODE

Fabrics » Vinyl and Faux Leather Fabrics



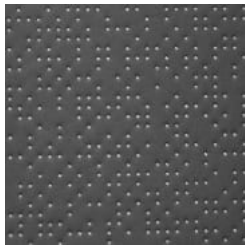
Brand: **Concertex**

MORSE CODE

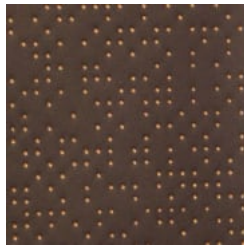
Fabrics » Vinyl and Faux Leather Fabrics

COLOURWAY CARD

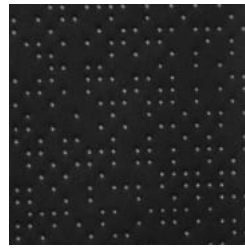
COLOURWAY CARD



CHARCOAL



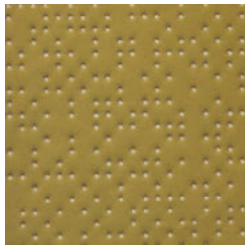
DK. ESPRESSO



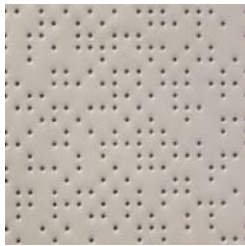
DUSK



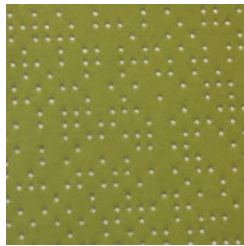
ELK



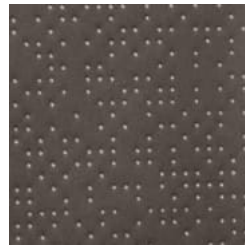
HONEYCOMB



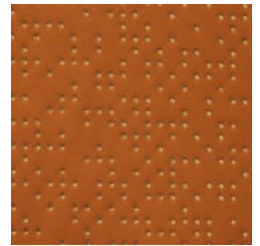
LINEN



MATCHA



PALLADIUM



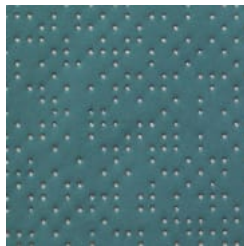
PERSIMMON



RUBY RED



SAPPHIRE



SEA GREEN

MORSE CODE

Fabrics » Vinyl and Faux Leather Fabrics

Morse Code is a 137cm wide coted fabric that's anti-bacterial and bleach cleanable ideal for indoor use. Available in 12 colours.

✓ **Bleach Cleanable**

✓ **Moisture Barrier**

✓ **Anti-Bacterial**

✓ **Anti-Microbial**

Roll Size 137cm x Approx 50m - Available by the lineal metre

Composition 100% polyurethane on a 100% pollex backing

Abrasion 100,000 + double rubs Wyzenbeek

Pattern Repeat Size 16.7cm V. x 17.7cm H

Environmental Info

- PVC free
- Phthalate Free
- DMF Free
- No added fire retardant
- Anti-Bacterial
- Healthier Hospitals compliant
- Complies with CAL01351

Fire Rating

Tested in accordance with AS1530.3

Spread of Flame Index - 0

Smoke Developed Index - 5

Warranty 2-year warranty. Visit baresque.com.au/warranty for complete details.

Lead Time

- 2-weeks (approx.) from Wednesday, subject to stock availability.
- Additional 1-week for Western Australia.
- Express delivery is available subject to a surcharge. Contact Baresque for details and pricing.

MORSE CODE

Fabrics » Vinyl and Faux Leather Fabrics

Care Instructions

Most stains and ballpoint pen marks can be removed with a clean dry towel.

Wipe material with a clean, soft cloth dampened with a mild solution of liquid detergent and warm water. Repeat using only clean water, then dry with a lint free cloth.

Avoid using wax polishes, solvents or concentrated abrasives.

For more difficult stains, dampen a soft white cloth with a solution of household bleach (5:1). Rub gently. Rinse with a water dampened cloth to remove bleach concentration.

Always test in an inconspicuous area first. If care instructions don't deliver the expected results, cease cleaning method immediately and contact Baresque for assistance.

MORSE CODE

Fabrics » Vinyl and Faux Leather Fabrics

Colour & Finish Options