

# NAPPA AIRE

Fabrics » Vinyl and Faux Leather Fabrics

---

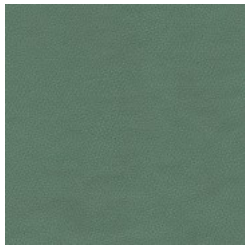


Brand: **Concertex**

# NAPPA AIRE

Fabrics » Vinyl and Faux Leather Fabrics

## COLOURWAY CARD



AEGEAN



AZURE



BOULEVARD



CADET

COLOURWAY CARD



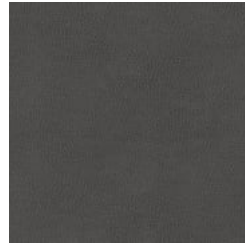
CHABLIS



CHALK



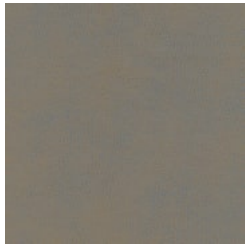
DEEP SEA



DUSK



ECRÚ



ERMINE



FLINT



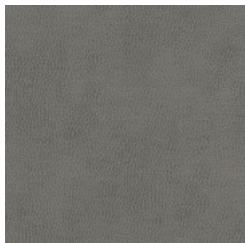
LATTE



LIMESTONE



MINERAL



MYSTIC



PACIFIC



PENNY



PEPPER



PITCH



SADDLE



SAFARI



SEA MIST



SILVER



SPROUT

# NAPPA AIRE

Fabrics » Vinyl and Faux Leather Fabrics

Nappa is a silicone and polyurethane hybrid coated fabric with a extremely soft touch and matte surface that's available in 24 colours.

✓ **Bleach Cleanable**

✓ **Ultra Performance**

✓ **Moisture Barrier**

✓ **Anti-Bacterial**

✓ **Anti-Microbial**

## Description

Aire is a silicone hybrid combining silicone and polyurethane to create an ultra-soft and ink/stain resistant coated fabric.

Even with its extremely soft touch and matte surface, the coated fabric is ideal for all applications.

Stains can be cleaned with just water and a dry towel. Bleach can also be used.

## Roll Size

137cm wide x 45.7m - Available by the full roll only

## Composition

100% silicone, Inherently Graffiti-Free

## Abrasion

200,000 + double rubs Wyzenbeek

## Environmental Info

PVC free

Phthalate Free

DMF Free

No added fire retardant

Anti-Bacterial

Healthier Hospitals compliant

Complies with CAL01351

## Fire Rating

Tested in accordance with AS1530.3

Spread of Flame Index - 0

Smoke Developed Index - 5

## Warranty

2-year warranty. Visit [baresque.com.au/warranty](https://www.baresque.com.au/warranty) for complete details.

# NAPPA AIRE

Fabrics » Vinyl and Faux Leather Fabrics

---

## Lead Time

- 2-weeks (approx.) from Wednesday, subject to stock availability.
  - Additional 1-week for Western Australia.
  - Express delivery is available subject to a surcharge. Contact Baresque for details and pricing.
- 

## Care Instructions

Wipe material with a clean, soft cloth dampened with a mild solution of liquid detergent and warm water. Repeat using only clean water, then dry with a lint free cloth.

Avoid using wax polishes, solvents or concentrated abrasives. For more difficult stains, dampen a soft white cloth with a solution of household bleach (10% bleach / 90% water). Rub gently. Rinse with a water dampened cloth to remove bleach concentration.

Always test in an inconspicuous area first.

---

## Additional Comments

Naturally breathable for cozy comfortness and luxurious soft touch.

---

# NAPPA AIRE

**Fabrics** » Vinyl and Faux Leather Fabrics

---

## Colour & Finish Options