

# NISHIKI

Fabrics » Vinyl and Faux Leather Fabrics



Brand: **CF Stinson**

# NISHIKI

Fabrics » Vinyl and Faux Leather Fabrics

## COLOURWAY CARD

COLOURWAY CARD



NIH 73 ADZUKI



NIH 63 BAMBOO



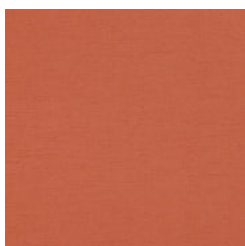
NIH 56 CELADON



NIH 53 GYOZA



NIH 67 JADE



NIH 64 KOI



NIH 69 LACQUER



NIH 62 LEMONGRASS



NIH 68 MISO



NIH 60 OBI



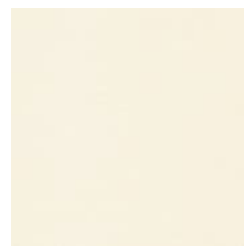
NIH 61 ORIBE



NIH 66 PEACOCK



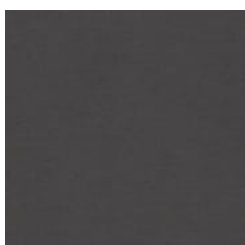
NIH 50 PLUM



NIH 57 RICE PAPER



NIH 51 SAKE



NIH 65 SAMURAI



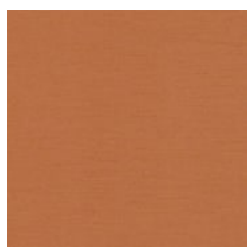
NIH 70 SHIBORI



NIH 55 SILVER



NIH 52 SOBA



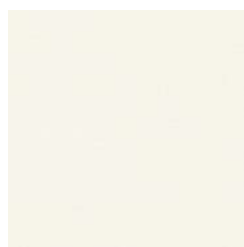
NIH 59 SPICE



NIH 54 SUMI



NIH 71 TEAK



NIH 58 TOFU



NIH 72 ZORI

# NISHIKI

Fabrics » Vinyl and Faux Leather Fabrics

Nishiki is a 137cm wide vinyl face on a knitted polyester backing that's available in 24 colours. Easily cleaned and durable.

✓ **Bleach Cleanable**

✓ **Moisture Barrier**

✓ **Anti-Bacterial**

✓ **Anti-Microbial**

Roll Size 137cm x Approx 55m - Available by the lineal metre

Composition Vinyl face on a knitted polyester backing

Abrasion 250,000 double rubs (Wyzenbeek)

Pattern Repeat Size N/A

Environmental Info Greenguard Certifications contributes towards LEED credits for low-emitting furniture.  
Compliant with Business and Institutional Furniture Manufacturers Association (BIFMA) X7.1 standard and BIFMA e3 credit 7.6.1.

Fire Rating Tested in accordance with AS1530.3  
Spread of Flame Index - 0  
Smoke Developed Index - 5

Warranty 2-year warranty. Visit [baresque.com.au/warranty](https://www.baresque.com.au/warranty) for complete details.

Lead Time

- 2-weeks (approx.) from Wednesday, subject to stock availability.
- Additional 1-week for Western Australia.
- Express delivery is available subject to a surcharge. Contact Baresque for details and pricing.

# NISHIKI

Fabrics » Vinyl and Faux Leather Fabrics

---

## Care Instructions

Use cloth with any of the following in preferred order of use:

1: Clear warm water

2: Mild solution of liquid detergent and warm water

3: Isopropyl Alcohol (a.k.a. rubbing alcohol)

Remove any detergent with a clean, damp cloth. Gently pat dry.

For more difficult stains, dampen a soft white cloth with a solution of household bleach (10% bleach / 90% water). Rub gently. Rinse with a water dampened cloth to remove bleach concentration.

Do not use solvent based or concentrated abrasive cleaning agents, lacquer thinners or nail polish remover as these may cause discolouration over a period of time.

Always test in an inconspicuous area first.

If care instructions don't deliver the expected results, cease cleaning method immediately and contact Baresque for assistance.

---

# NISHIKI

**Fabrics** » Vinyl and Faux Leather Fabrics

---

## Colour & Finish Options