

PETAL DOTS

Fabrics » Vinyl and Faux Leather Fabrics



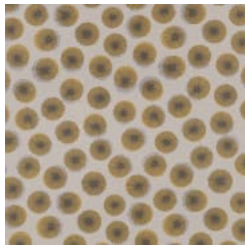
Brand: **CF Stinson**

PETAL DOTS

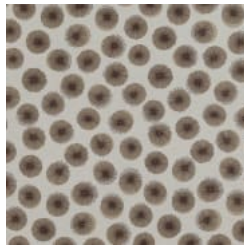
Fabrics » Vinyl and Faux Leather Fabrics

COLOURWAY CARD

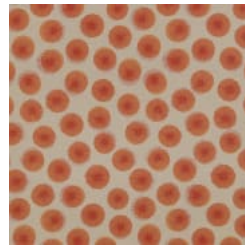
COLOURWAY CARD



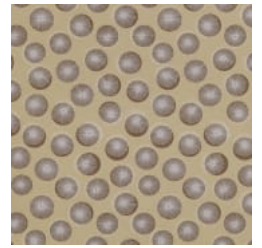
PDO 50 SUNFLOWER



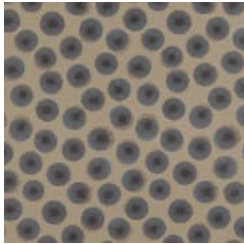
PDO 51 PUMICE



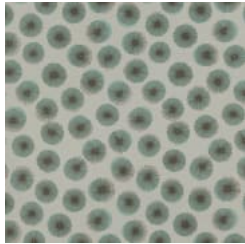
PDO 52 WILD FIRE



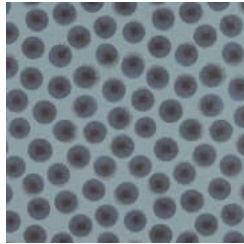
PDO 53 SAND DUNE



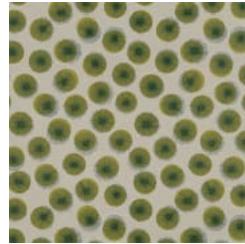
PDO 54 SHORELINE



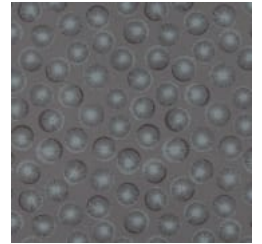
PDO 55 SEAGLASS



PDO 56 DUSK



PDO 57 ENDIVE



PDO 58 MOONBEAM

PETAL DOTS

Fabrics » Vinyl and Faux Leather Fabrics

Petal Dots is a 137cm wide vinyl coated fabric that evokes an organic floral feeling in the design. Available in 9 multicolour colourways.

✓ **Bleach Cleanable**

✓ **Moisture Barrier**

Roll Size 137cm x 45.7m - Available by the lineal metre

Composition Polyurethane (Polycarbonate Resins) with Silicone Surface on a polyester backing

Abrasion 100,000 + double rubs Wyzenbeek

Pattern Repeat Size 51cm V / 34.3cm H

Environmental Info Greenguard Certifications contributes towards LEED credits for low-emitting furniture.

Compliant with Business and Institutional Furniture Manufacturers Association (BIFMA) X7.1 standard and BIFMA e3 credit 7.6.1.

Fire Rating This product can be treated with a fire retardant that will ensure it meets Australian Standard 1530.3. Contact Baresque for details.

Warranty 2-year warranty. Visit [baresque.com.au/warranty](https://www.baresque.com.au/warranty) for complete details.

Lead Time

- 2-weeks (approx.) from Wednesday, subject to stock availability.
- Additional 1-week for Western Australia.
- Express delivery is available subject to a surcharge. Contact Baresque for details and pricing.

PETAL DOTS

Fabrics » Vinyl and Faux Leather Fabrics

Care Instructions

Use cloth with any of the following in preferred order of use:

1: Clear warm water

2: Mild solution of liquid detergent and warm water

3: Isopropyl Alcohol (a.k.a. rubbing alcohol)

Remove any detergent with a clean, damp cloth. Gently pat dry.

For more difficult stains, dampen a soft white cloth with a solution of household bleach (10% bleach / 90% water). Rub gently. Rinse with a water dampened cloth to remove bleach concentration.

Do not use solvent based or concentrated abrasive cleaning agents, lacquer thinners or nail polish remover as these may cause discolouration over a period of time.

Always test in an inconspicuous area first.

If care instructions don't deliver the expected results, cease cleaning method immediately and contact Baresque for assistance.

Additional Comments

Bleach cleanable. Advanced Soil and Stain Resistant Top Coat. Ink resistant.

PETAL DOTS

Fabrics » Vinyl and Faux Leather Fabrics

Colour & Finish Options