

PINWHEEL

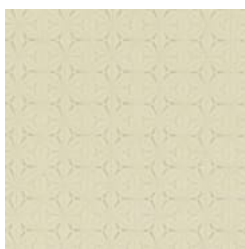
Fabrics » Vinyl and Faux Leather Fabrics



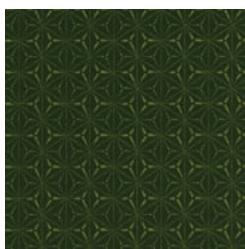
Brand: **Sangetsu**

PINWHEEL

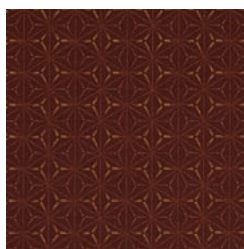
Fabrics » Vinyl and Faux Leather Fabrics



UP8931



UP8932



UP8933



UP8934



UP8935

PINWHEEL

Fabrics » Vinyl and Faux Leather Fabrics

Pinwheel is a 122cm wide vinyl coated fabric with geometric pattern that's available in 5 colours. Cleanable with warm water and liquid detergent

✓ Moisture Barrier

Roll Size 137cm x Approx 50m - Available by the lineal metre

Composition Vinyl face on a knitted fabric backing

Abrasion 100,000 + double rubs Wyzenbeek

Pattern Repeat Size 3.4cm V x 5.8cm H

Fire Rating Tested in accordance with AS1530.3
Spread of Flame Index - 0
Smoke Developed Index - 5

Warranty 2-year warranty. Visit baresque.com.au/warranty for complete details.

Lead Time

- 2-weeks (approx.) from Wednesday, subject to stock availability.
- Additional 1-week for Western Australia.
- Express delivery is available subject to a surcharge. Contact Baresque for details and pricing.

Care Instructions

Use cloth with any of the following in preferred order of use

- * Clear warm water
- * Mild solution of liquid detergent and warm water
- * Isopropyl Alcohol (a.k.a. rubbing alcohol)

Do not use solvent based or concentrated abrasive cleaning agents, lacquer thinners, nail polish remover or cleaning agents containing bleach as these may cause discolouration over a period of time.

Remove any detergent with a clean, damp cloth. Gently pat dry.

Always test in an inconspicuous area first. If care instructions don't deliver the expected results, cease cleaning method immediately and contact Baresque for assistance.

PINWHEEL

Fabrics » Vinyl and Faux Leather Fabrics

Colour & Finish Options