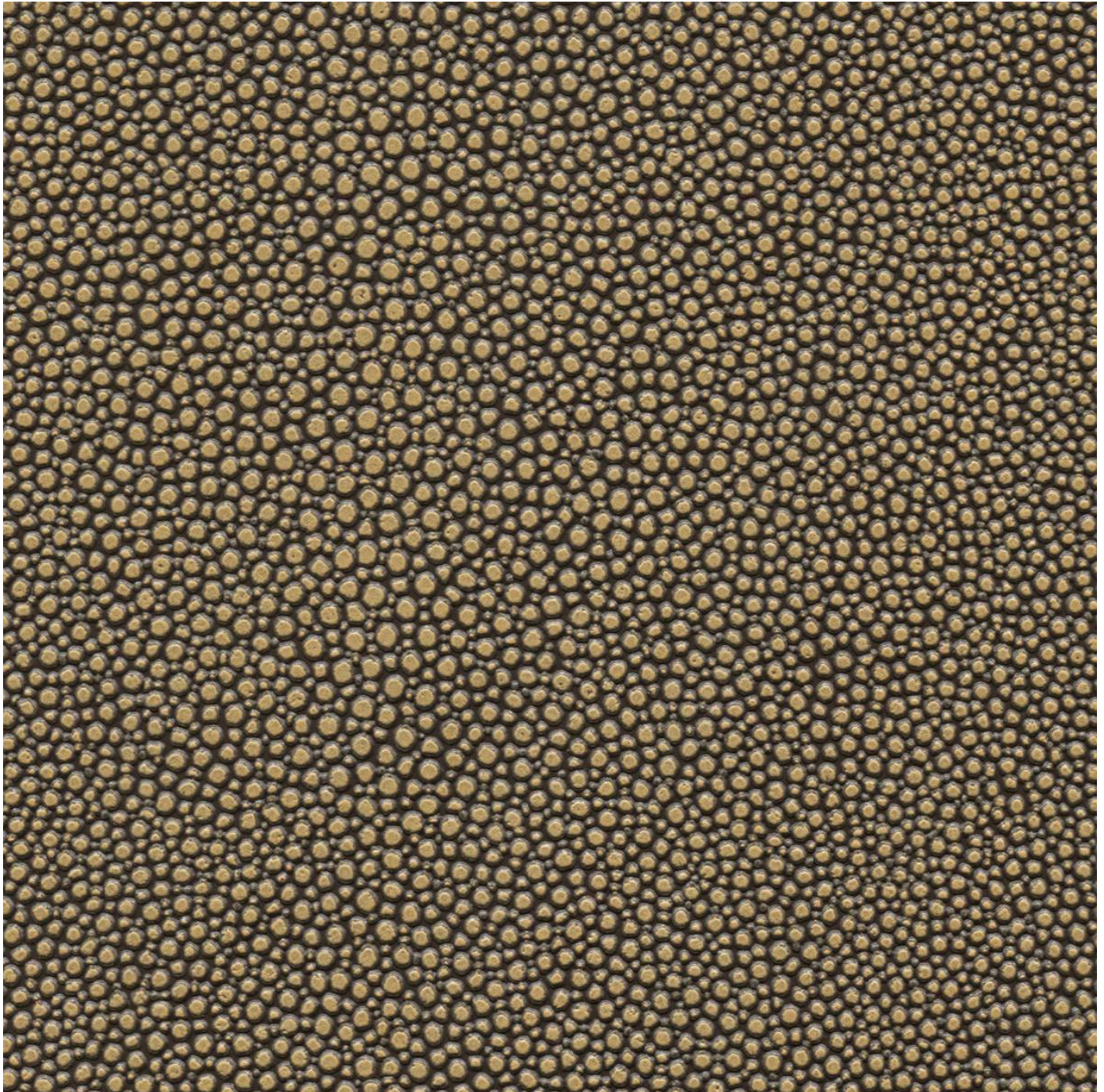


# SHAGREEN

Fabrics » Vinyl and Faux Leather Fabrics

---



Brand: **Concertex**



# SHAGREEN

Fabrics » Vinyl and Faux Leather Fabrics



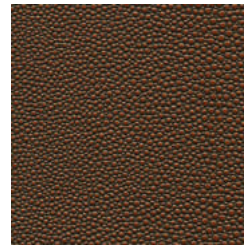
ABYSS



CHIANTI



COFFEE



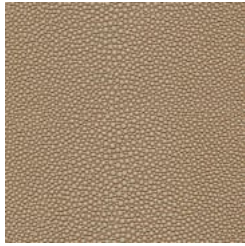
COPPER



EARTH



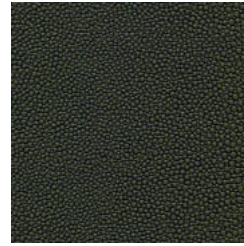
ETHIOPIA



FAWN



IVORY



MOSS



PARCH



RIDGE



SAND



SUMATRA

# SHAGREEN

Fabrics » Vinyl and Faux Leather Fabrics

Shagreen is a 137cm wide coated fabric that's available in 13 colours ideal for indoor use. Anti-bacterial and bleach cleanable

✓ **Bleach Cleanable**

✓ **Moisture Barrier**

✓ **Anti-Bacterial**

## Description

This is a discontinued product.

If you are looking for a similar product, please check Granular <https://www.baresque.com.au/products/granular>

## Roll Size

137cm wide X 36.5m- Available by the lineal metre.

## Composition

Poly vinyl face with 65% polyester, 35% cotton backing

## Abrasion

100,000 + double rubs Wyzenbeek

## Pattern Repeat Size

N/A

## Environmental Info

PVC/Phthalates free

No added fire retardant

Healthier Hospitals compliant

## Fire Rating

This product can be treated with a fire retardant that will ensure it meets Australian Standard 1530.3. Contact Baresque for details.

## Warranty

2-year warranty. Visit [baresque.com.au/warranty](https://www.baresque.com.au/warranty) for complete details.

## Lead Time

- 2-weeks (approx.) from Wednesday, subject to stock availability.
- Additional 1-week for Western Australia.
- Express delivery is available subject to a surcharge. Contact Baresque for details and pricing.

# SHAGREEN

Fabrics » Vinyl and Faux Leather Fabrics

---

## Care Instructions

Use cloth with any of the following in preferred order of use:

- 1: Clear warm water
- 2: Mild solution of liquid detergent and warm water
- 3: Isopropyl Alcohol (a.k.a. rubbing alcohol)

Remove any detergent with a clean, damp cloth. Gently pat dry.

For more difficult stains, dampen a soft white cloth with a solution of household bleach (10% bleach / 90% water). Rub gently. Rinse with a water dampened cloth to remove bleach concentration.

Do not use solvent based or concentrated abrasive cleaning agents, lacquer thinners or nail polish remover as these may cause discolouration over a period of time.

Always test in an inconspicuous area first.

If care instructions don't deliver the expected results, cease cleaning method immediately and contact Baresque for assistance.

---

# SHAGREEN

**Fabrics** » Vinyl and Faux Leather Fabrics

---

## Colour & Finish Options