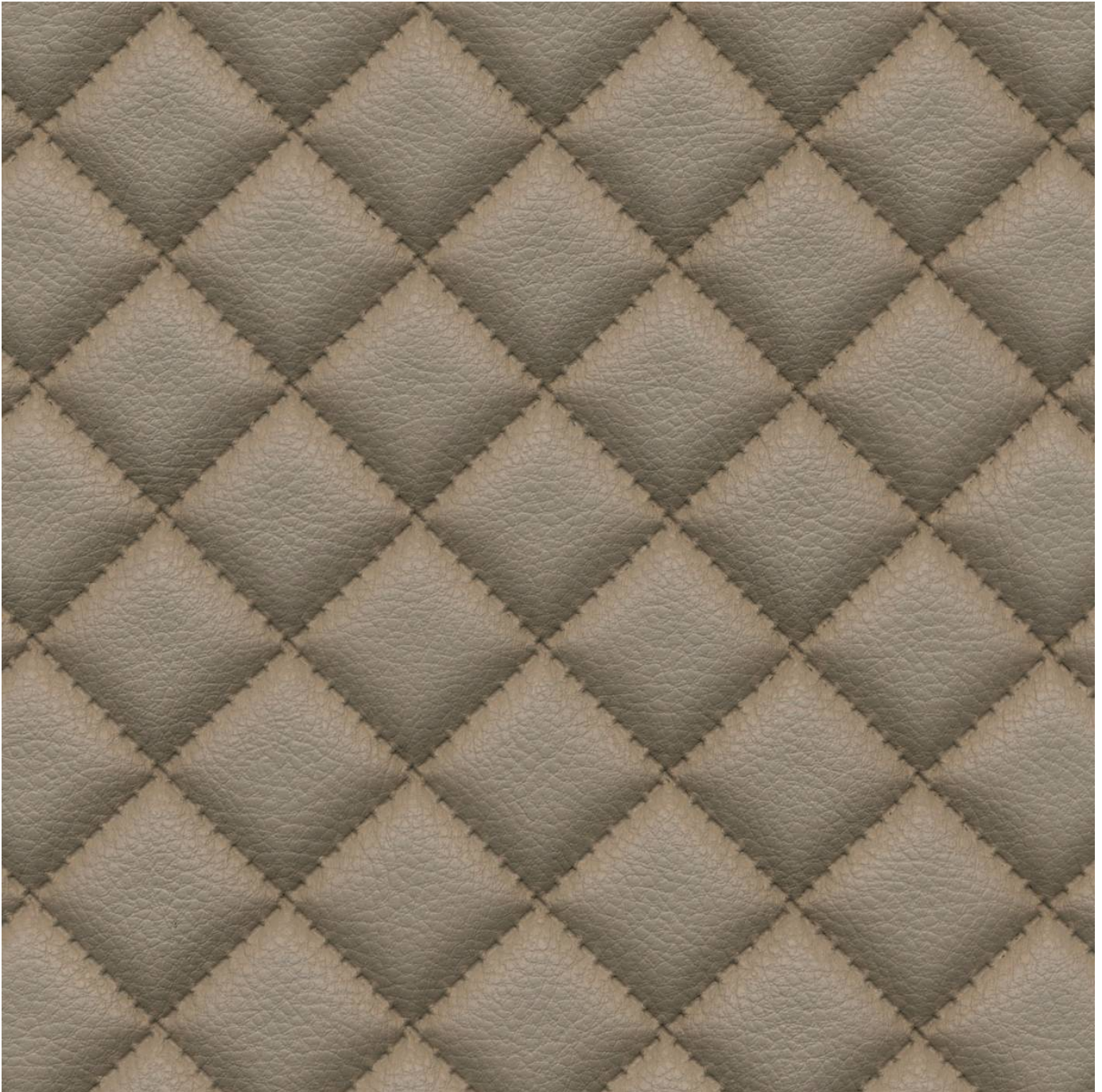


SOLITAIRE DIMENSIONAL

Fabrics » Vinyl and Faux Leather Fabrics



Brand: **Concertex**

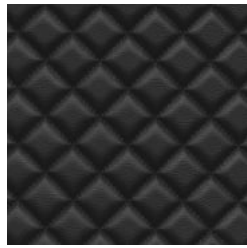
Collection: **Dimensional**

SOLITAIRE DIMENSIONAL

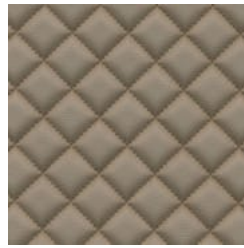
Fabrics » Vinyl and Faux Leather Fabrics

COLOURWAY CARD

COLOURWAY CARD



BLACK



CHARDONNAY



FIERCE



INK



MINERAL



MINK



SMOKE



SNOW



TERRA

SOLITAIRE DIMENSIONAL

Fabrics » Vinyl and Faux Leather Fabrics

Solitaire is a 137cm wide padded faux leather impervious to moisture upholstery fabric that's available in 20 colours.

✓ **Bleach Cleanable**

✓ **Moisture Barrier**

✓ **Anti-Bacterial**

Description Perfect for bedheads or upholstered booth seating, DIMENSIONAL is a revolutionary, padded faux leather created by an ultrasonic sealing process. It is impervious to moisture and has extreme depth for 3 dimensional look while flexible enough for easy upholstering. The faux leather surface passes over 100,000 double rubs and contains a built-in graffiti-free layer for stain-free atmosphere. Stains and ballpoint pen marks can easily be wiped away with just a dry towel. Bleach solution can also be used.

Roll Size 132cm wide X 27.4m- Available by the lineal metre.

Composition 100% polyurethane face on a 100% polyester backing

Abrasion 100,000+ Double Rubs (Wyzenbeek)

Pattern Repeat Size 3.5cm V / 3.5cm H

Environmental Info

- PVC free
- Phthalate Free
- DMF Free
- No added fire retardant
- Anti-Bacterial
- Healthier Hospitals compliant
- Complies with CAL01351

Fire Rating

- Tested in accordance with AS1530.3
- Spread of Flame Index - 0
- Smoke Developed Index - 5

Warranty 2-year warranty. Visit [baresque.com.au/warranty](https://www.baresque.com.au/warranty) for complete details.

SOLITAIRE DIMENSIONAL

Fabrics » Vinyl and Faux Leather Fabrics

Lead Time

- 2-weeks (approx.) from Wednesday, subject to stock availability.
 - Additional 1-week for Western Australia.
 - Express delivery is available subject to a surcharge. Contact Baresque for details and pricing.
-

Care Instructions

Use cloth with any of the following in preferred order of use:

- 1: Clear warm water
- 2: Mild solution of liquid detergent and warm water
- 3: Isopropyl Alcohol (a.k.a. rubbing alcohol)

Remove any detergent with a clean, damp cloth. Gently pat dry.

For more difficult stains, dampen a soft white cloth with a solution of household bleach (10% bleach / 90% water). Rub gently. Rinse with a water dampened cloth to remove bleach concentration.

Do not use solvent based or concentrated abrasive cleaning agents, lacquer thinners or nail polish remover as these may cause discolouration over a period of time.

Always test in an inconspicuous area first.

If care instructions don't deliver the expected results, cease cleaning method immediately and contact Baresque for assistance.

SOLITAIRE DIMENSIONAL

Fabrics » Vinyl and Faux Leather Fabrics

Colour & Finish Options