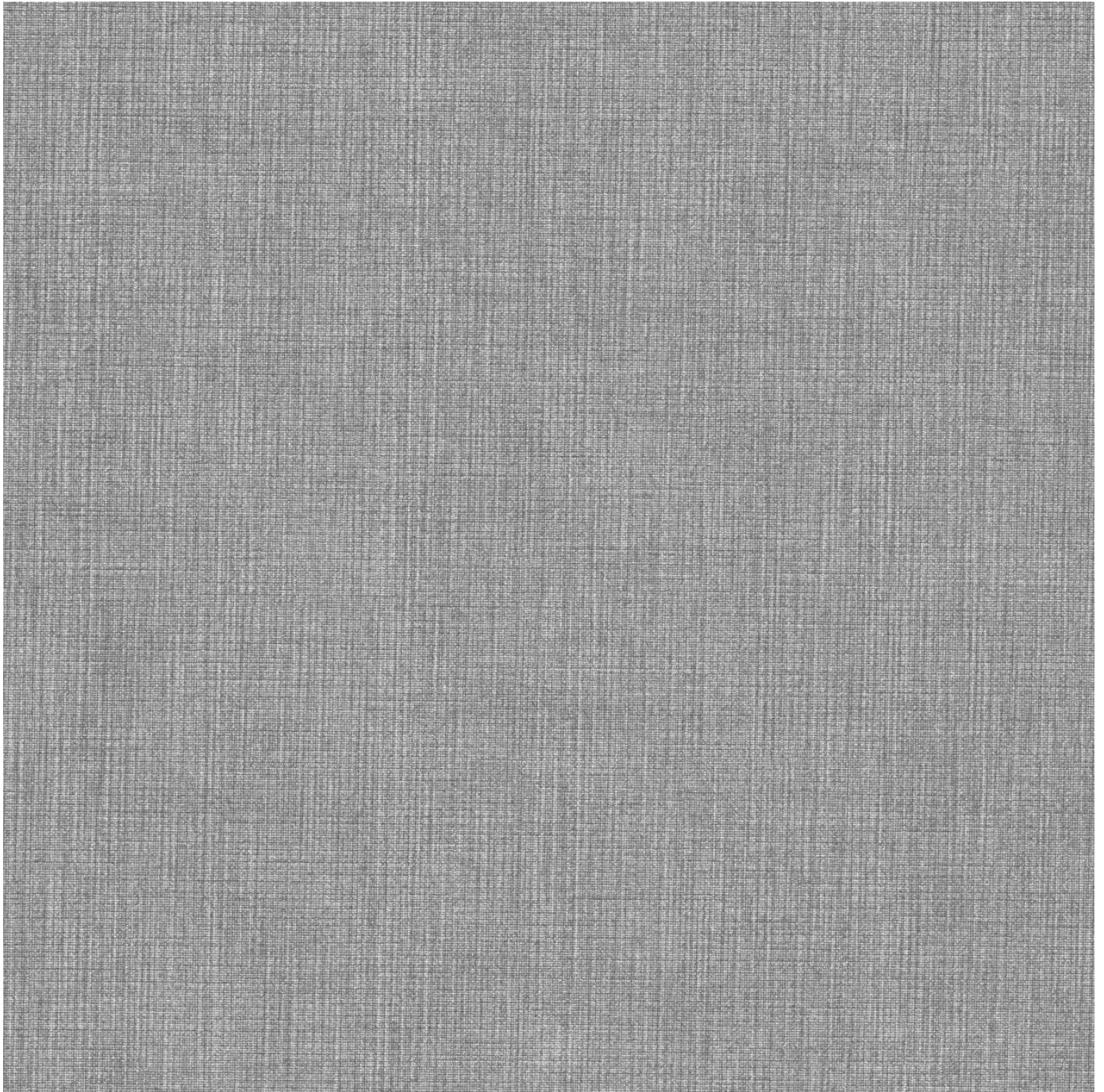


THALIA

Fabrics » Vinyl and Faux Leather Fabrics



Brand: **Concertex**

THALIA

Fabrics » Vinyl and Faux Leather Fabrics

COLOURWAY CARD



CHARM



ESPRESSO



FLAX



GEM

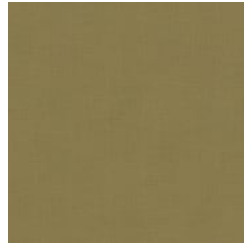
COLOURWAY CARD



HAY



KARAT



LAUREL



MESA



MILKWEED



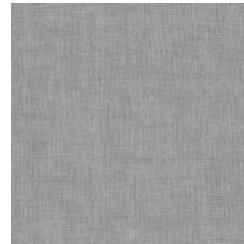
MOCHA



PACIFIC



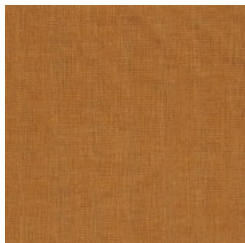
SEQUOIA



SILVER



SLATE



TANGERINE



WAVE

THALIA

Fabrics » Vinyl and Faux Leather Fabrics

Thalia is a 137cm wide coated fabric that's available in 16 colours ideal for indoor use. Anti-bacterial, bleach cleanable resistant to most stains.

✓ **Bleach Cleanable**

✓ **Moisture Barrier**

✓ **Anti-Bacterial**

Roll Size 137cm x 45.7m - Available by the lineal metre

Composition 100% polyurethane with 100% reinforced pollex backing

Abrasion 200,000 + double rubs Wyzenbeek

Pattern Repeat Size N/A

Environmental Info

- PVC free
- Phthalate Free
- DMF Free
- No added fire retardant
- Anti-Bacterial
- Healthier Hospitals compliant
- Complies with CAL01351

Fire Rating

- Tested in accordance with AS1530.3
- Spread of Flame Index - 0
- Smoke Developed Index - 5

Warranty 2-year warranty. Visit baresque.com.au/warranty for complete details.

Lead Time

- 2-weeks (approx.) from Wednesday, subject to stock availability.
- Additional 1-week for Western Australia.
- Express delivery is available subject to a surcharge. Contact Baresque for details and pricing.

THALIA

Fabrics » Vinyl and Faux Leather Fabrics

Care Instructions

Use cloth with any of the following in preferred order of use:

1: Clear warm water

2: Mild solution of liquid detergent and warm water

3: Isopropyl Alcohol (a.k.a. rubbing alcohol)

Do not use solvent based or concentrated abrasive cleaning agents, lacquer thinners, nail polish remover or cleaning agents containing bleach as these may cause discolouration over a period of time.

Remove any detergent with a clean, damp cloth. Gently pat dry.

Always test in an inconspicuous area first. If care instructions don't deliver the expected results, cease cleaning method immediately and contact Baresque for assistance.

THALIA

Fabrics » Vinyl and Faux Leather Fabrics

Colour & Finish Options