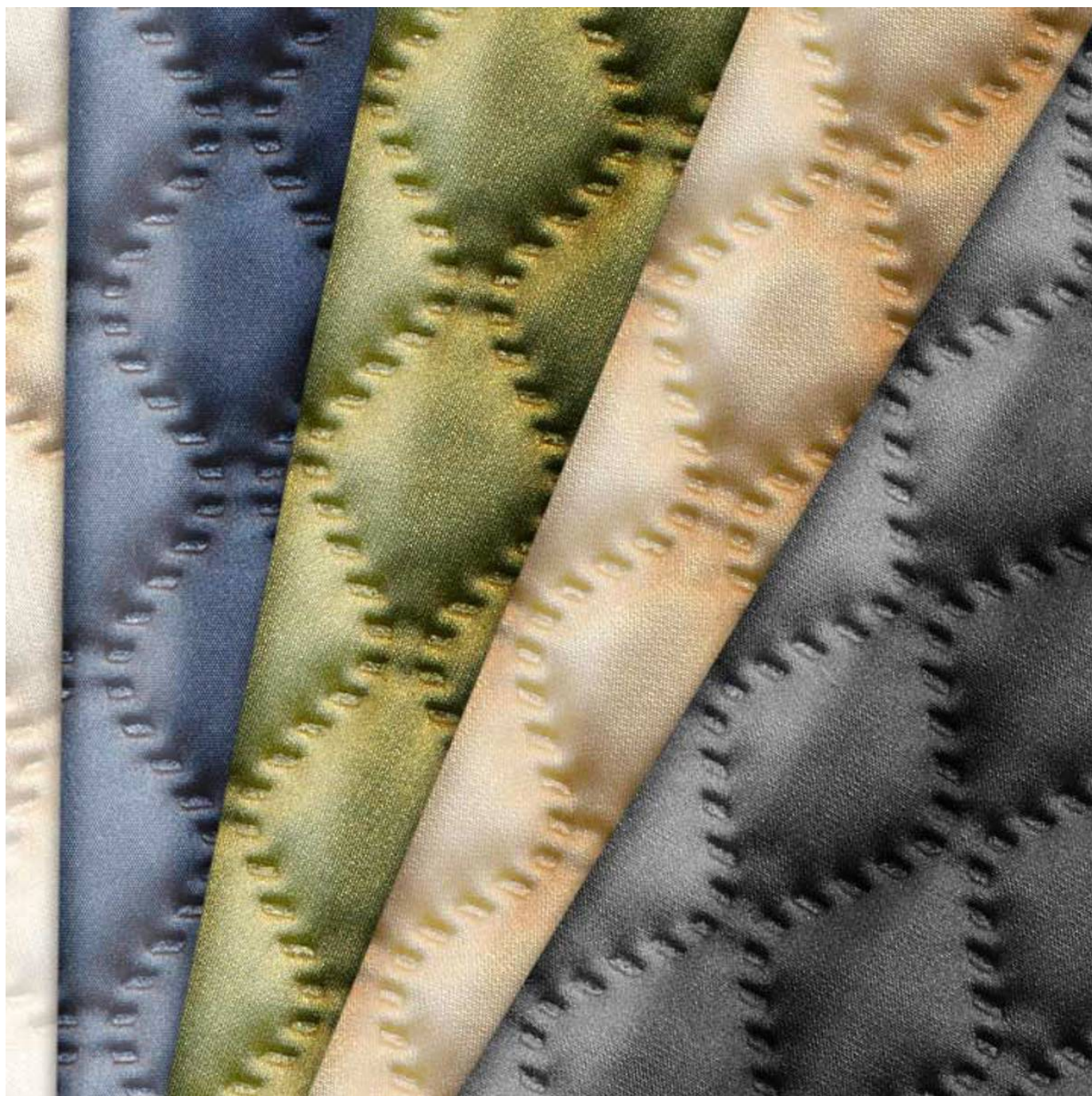


THEORY

Fabrics » Vinyl and Faux Leather Fabrics



Brand: **Concertex**

THEORY

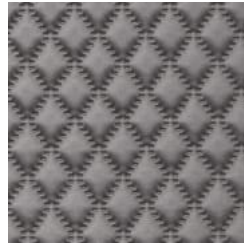
Fabrics » Vinyl and Faux Leather Fabrics

COLOURWAY CARD

COLOURWAY CARD



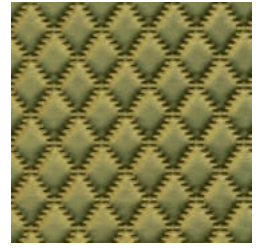
CLIPPER



HAZE



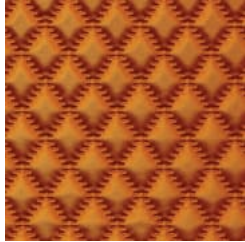
OCEANIC



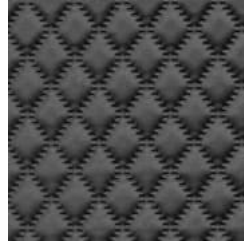
PASTURE



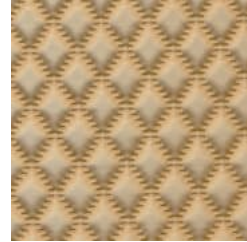
PEACH ROSE



SAFFRON



SEAL



SILK

THEORY

Fabrics » Vinyl and Faux Leather Fabrics

Theory is a 137cm wide coated fabric embossed in a diamond pattern available in 8 colours. Anti-bacterial and bleach cleanable

✓ **Bleach Cleanable**

✓ **Moisture Barrier**

✓ **Anti-Bacterial**

Roll Size 132cm wide x 18.2m - Available by the half (9.1m) or full roll (18.2m) only

Composition 100% polyurethane on a 100% polyester backing

Abrasion 100,000 + double rubs Wyzenbeek

Pattern Repeat Size 3.1cm V / 3.1cm H

Environmental Info

- PVC free
- Phthalate Free
- DMF Free
- No added fire retardant
- Anti-Bacterial
- Healthier Hospitals compliant
- Complies with CAL01351

Fire Rating

- Tested in accordance with AS1530.3
- Spread of Flame Index - 0
- Smoke Developed Index - 5

Warranty 2-year warranty. Visit baresque.com.au/warranty for complete details.

Lead Time

- 2-weeks (approx.) from Wednesday, subject to stock availability.
- Additional 1-week for Western Australia.
- Express delivery is available subject to a surcharge. Contact Baresque for details and pricing.

THEORY

Fabrics » Vinyl and Faux Leather Fabrics

Care Instructions

Most stains and ballpoint pen marks can be removed with a clean dry towel.

Wipe material with a clean, soft cloth dampened with a mild solution of liquid detergent and warm water. Repeat using only clean water, then dry with a lint free cloth.

Avoid using wax polishes, solvents or concentrated abrasives.

For more difficult stains, dampen a soft white cloth with a solution of household bleach (5:1). Rub gently. Rinse with a water dampened cloth to remove bleach concentration.

Always test in an inconspicuous area first. If care instructions don't deliver the expected results, cease cleaning method immediately and contact Baresque for assistance.

Additional Comments

Theory should only be stapled. Do not use adhesives on this product as adhesives seeping into the padding will deform the natural shape.

THEORY

Fabrics » Vinyl and Faux Leather Fabrics

Colour & Finish Options