

VOLTAGE DIMENSIONAL

Fabrics » Vinyl and Faux Leather Fabrics



Brand: **Concertex**

Collection: **Dimensional**

1300 306 399

info@baresque.com.au

baresque.com.au

1 of 5

VOLTAGE DIMENSIONAL

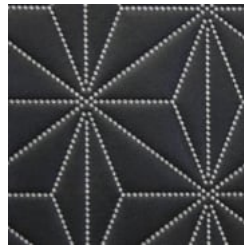
Fabrics » Vinyl and Faux Leather Fabrics

COLOURWAY CARD

COLOURWAY CARD



CITRINE



EBONITE



FLINT



GUNMETAL



GYPSY



IVORY



LATTE



MUDDY GOLD



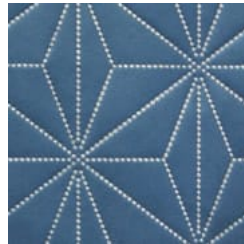
PENNY



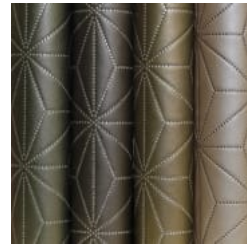
PEWTER



SPRING



TURQUOISE



VOLTAGE DIMENSIONAL

Fabrics » Vinyl and Faux Leather Fabrics

Voltage-Dimensional is a padded faux leather coated fabric impervious to moisture embossed with a geometric pattern available in 12 colours.

✓ **Bleach Cleanable**

✓ **Moisture Barrier**

✓ **Anti-Bacterial**

✓ **Anti-Microbial**

Description Perfect for bedheads or upholstered booth seating, DIMENSIONAL is a revolutionary, padded faux leather created by an ultrasonic sealing process. It is impervious to moisture and has extreme depth for 3 dimensional look while flexible enough for easy upholstery. The faux leather surface passes over 100,000 double rubs and contains a built-in graffiti-free layer for stain-free atmosphere. Stains and ballpoint pen marks can easily be wiped away with just a dry towel. Bleach solution can also be used.

Roll Size 137cm x 45.7m - Available by the lineal metre

Composition 100% polyurethane on a 100% pollex backing

Abrasion 100,000 + double rubs Wyzenbeek

Pattern Repeat Size 8.5cm V. x 11cm H

Environmental Info

- PVC free
- Phthalate Free
- DMF Free
- No added fire retardant
- Anti-Bacterial
- Healthier Hospitals compliant
- Complies with CAL01351

Fire Rating

- Tested in accordance with AS1530.3
- Spread of Flame Index - 0
- Smoke Developed Index - 5

Warranty 2-year warranty. Visit [baresque.com.au/warranty](https://www.baresque.com.au/warranty) for complete details.

VOLTAGE DIMENSIONAL

Fabrics » Vinyl and Faux Leather Fabrics

Lead Time

- 2-weeks (approx.) from Wednesday, subject to stock availability.
- Additional 1-week for Western Australia.
- Express delivery is available subject to a surcharge. Contact Baresque for details and pricing.

Care Instructions

Most stains and ballpoint pen marks can be removed with a clean dry towel.

Wipe material with a clean, soft cloth dampened with a mild solution of liquid detergent and warm water. Repeat using only clean water, then dry with a lint free cloth.

Avoid using wax polishes, solvents or concentrated abrasives.

For more difficult stains, dampen a soft white cloth with a solution of household bleach (5:1). Rub gently. Rinse with a water dampened cloth to remove bleach concentration.

Always test in an inconspicuous area first. If care instructions don't deliver the expected results, cease cleaning method immediately and contact Baresque for assistance.

VOLTAGE DIMENSIONAL

Fabrics » Vinyl and Faux Leather Fabrics

Colour & Finish Options