

# WEBSTER

**Fabrics** » Vinyl and Faux Leather Fabrics

---



Brand: **Concertex**

1300 306 399

[info@baresque.com.au](mailto:info@baresque.com.au)

[baresque.com.au](http://baresque.com.au)

1 of 4

# WEBSTER

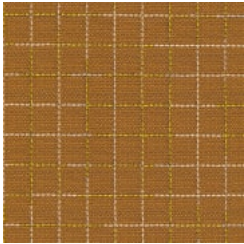
Fabrics » Vinyl and Faux Leather Fabrics

## COLOURWAY CARD

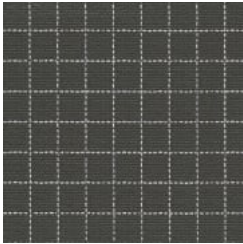
COLOURWAY CARD



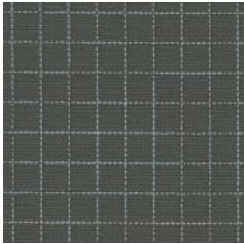
FLEECE



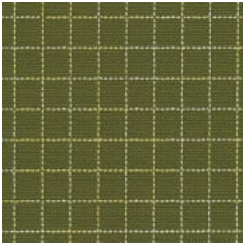
GINGER



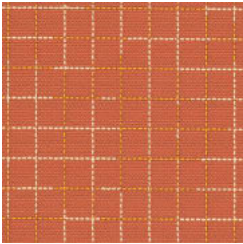
GRAPHITE



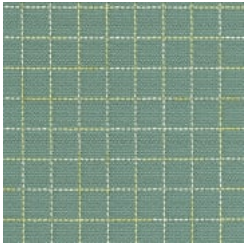
MARINA



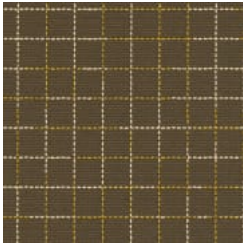
PARROT



TART



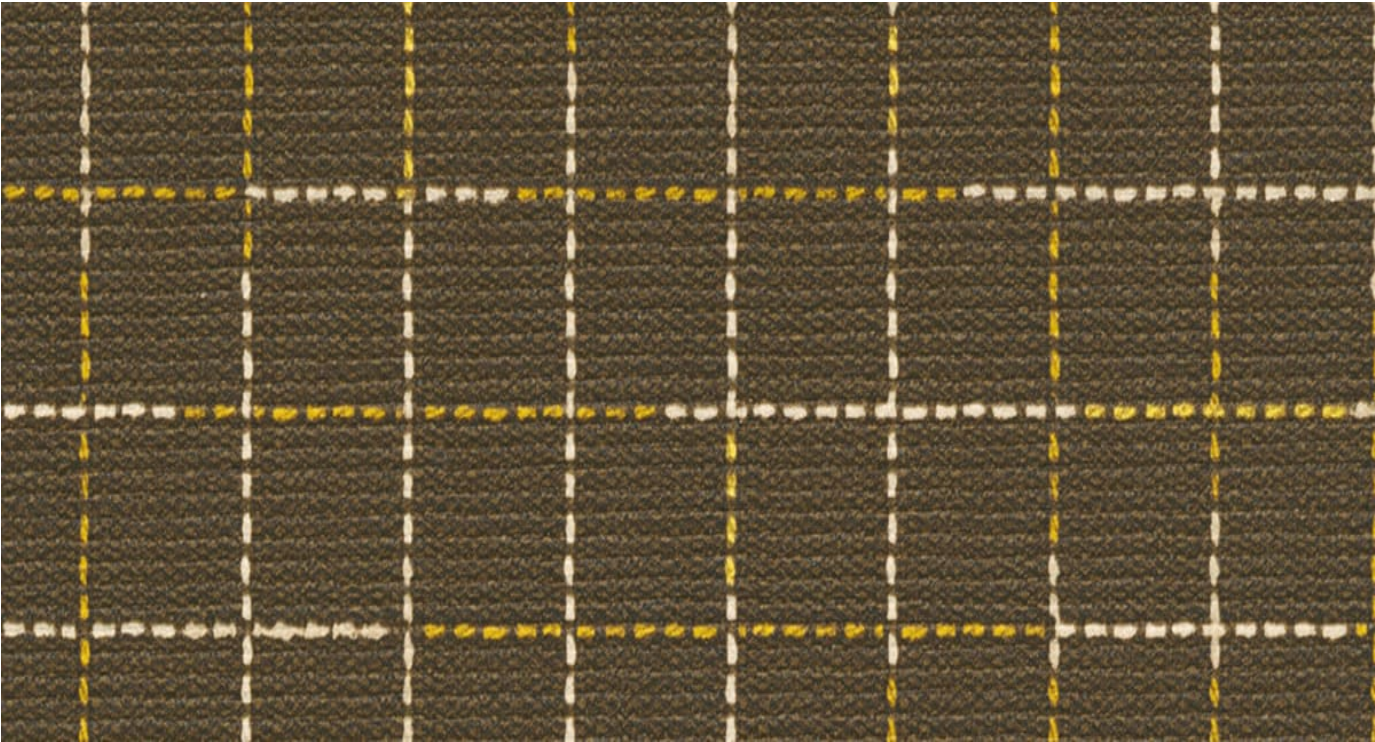
TIDEPool



TRUFFLE

# WEBSTER

Fabrics » Vinyl and Faux Leather Fabrics



Webster is a 137cm wide ultra-soft and stain resistant coated fabric with a check pattern that's available in 8 colours.

- Bleach Cleanable
  - Anti-Bacterial
- Ultra Performance
  - Anti-Microbial
- Moisture Barrier

**Description** Aire is a silicone hybrid combining silicone and polyurethane to create an ultra-soft and ink/stain resistant coated fabric. Even with its extremely soft touch and matte surface, the coated fabric is ideal for all applications. Stains can be cleaned with just water and a dry towel. Bleach can also be used.

**Roll Size** 137cm x 45.7m - Available by the lineal metre

**Composition** Face - 100% Silicone, Inherently Graffiti-Free Middle - 100% polyurethane Backing - 100% Pollex

**Abrasion** 200,000 double rubs (Wyzenbeek)

**Pattern Repeat Size** 35cm V / 35cm H

# WEBSTER

Fabrics » Vinyl and Faux Leather Fabrics

---

## Environmental Info

PVC free

Phthalate Free

DMF Free

No added fire retardant

Anti-Bacterial

Healthier Hospitals compliant

Complies with CAL01351

---

## Fire Rating

Tested in accordance with AS1530.3

Spread of Flame Index - 0

Smoke Developed Index - 5

---

## Warranty

2-year warranty. Visit [baresque.com.au/warranty](https://baresque.com.au/warranty) for complete details.

---

## Lead Time

- 2-weeks (approx.) from Wednesday, subject to stock availability.
  - Additional 1-week for Western Australia.
  - Express delivery is available subject to a surcharge. Contact Baresque for details and pricing.
- 

## Care Instructions

Wipe material with a clean, soft cloth dampened with a mild solution of liquid detergent and warm water. Repeat using only clean water, then dry with a lint free cloth.

Avoid using wax polishes, solvents or concentrated abrasives. For more difficult stains, dampen a soft white cloth with a solution of household bleach (10% bleach / 90% water). Rub gently. Rinse with a water dampened cloth to remove bleach concentration.

Always test in an inconspicuous area first.

---

## Additional Comments

Naturally breathable for cozy comfortness and luxurious soft touch.

---