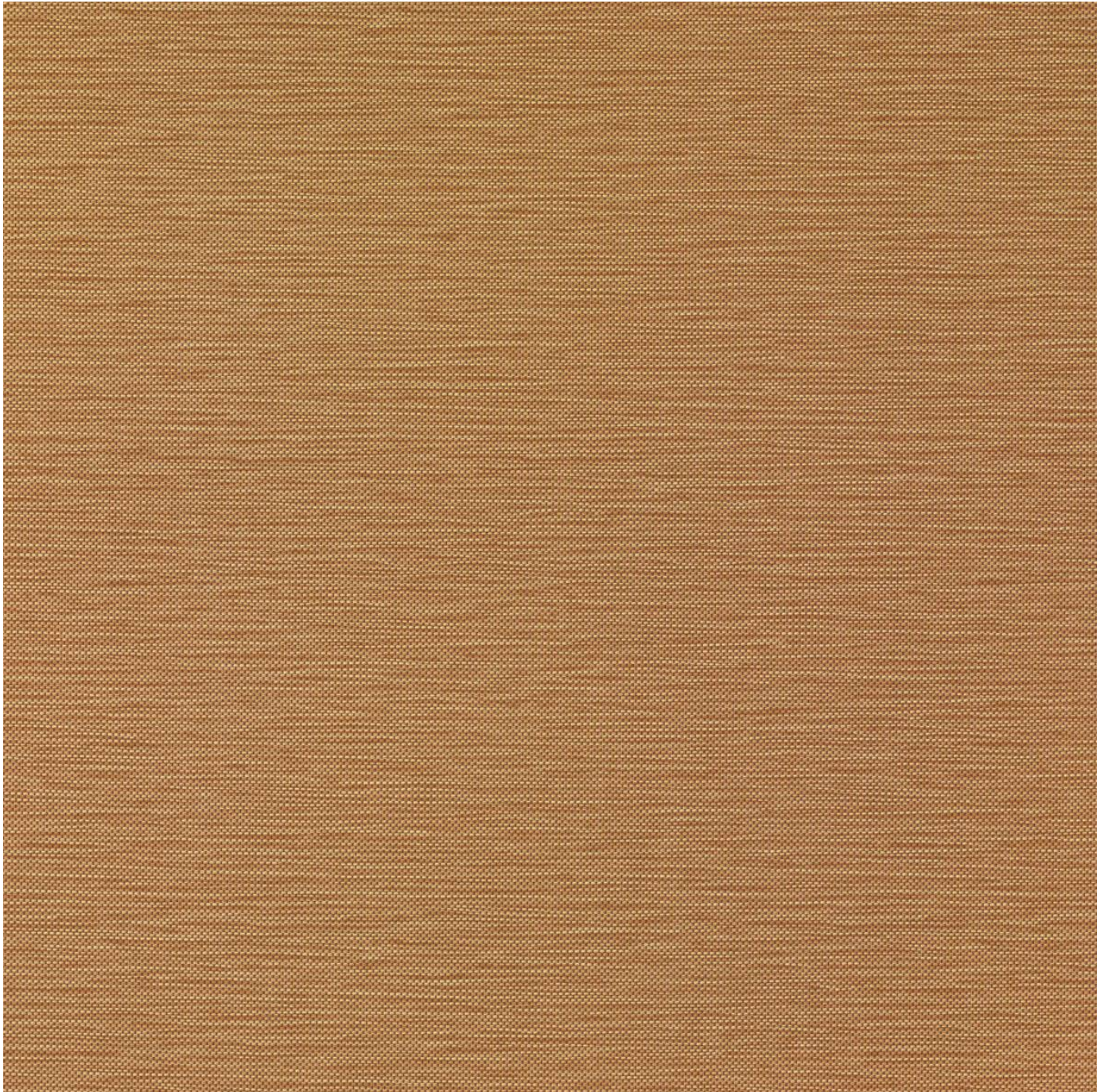


# WEFT

Fabrics » Vinyl and Faux Leather Fabrics

---



Brand: **CF Stinson**



# WEFT

Fabrics » Vinyl and Faux Leather Fabrics

## COLOURWAY CARD

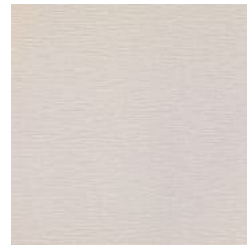
COLOURWAY CARD



WEF 10 BISQUE



WEF 11 CHILL



WEF 12 SILVER



WEF 13 SALVIA



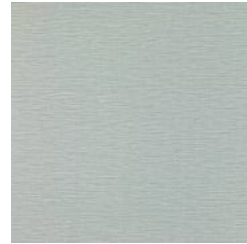
WEF 14 HONEY



WEF 15  
BUTTERSCOTCH



WEF 16 DREAM



WEF 17 BREEZE



WEF 18 CEDAR



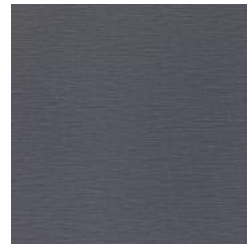
WEF 19 CLAY



WEF 20 SUMAC



WEF 21 DUSK



WEF 22 INDIGO



WEF 23 JUNGLE



WEF 24 BROWNIE



WEF 25 INCENSE

# WEFT

Fabrics » Vinyl and Faux Leather Fabrics

Weft is a 137cm wide coated fabric that emulates a woven fabric with textural hand. It's available in 16 colours.

✓ **Bleach Cleanable**

✓ **Moisture Barrier**

---

## Description

Weft emulates a woven fabric with a textural hand.

---

## Roll Size

137cm wide X 36.5m- Available by the lineal metre.

---

## Composition

Vinyl face on a knitted polyester backing

---

## Abrasion

Exceeds 1,300,000 double rubs (Wyzenbeek)

---

## Pattern Repeat Size

N/A

---

## Environmental Info

Greenguard Certifications contributes towards LEED credits for low-emitting furniture.

Compliant with Business and Institutional Furniture Manufacturers Association (BIFMA) X7.1 standard and BIFMA e3 credit 7.6.1.

---

## Fire Rating

Tested in accordance with AS1530.3

Spread of Flame Index - 0

Smoke Developed Index - 5

---

## Warranty

2-year warranty. Visit [baresque.com.au/warranty](https://www.baresque.com.au/warranty) for complete details.

---

## Lead Time

- 2-weeks (approx.) from Wednesday, subject to stock availability.
- Additional 1-week for Western Australia.
- Express delivery is available subject to a surcharge. Contact Baresque for details and pricing.

# WEFT

Fabrics » Vinyl and Faux Leather Fabrics

---

## Care Instructions

Use cloth with any of the following in preferred order of use:

1: Clear warm water

2: Mild solution of liquid detergent and warm water

3: Isopropyl Alcohol (a.k.a. rubbing alcohol)

Remove any detergent with a clean, damp cloth. Gently pat dry.

For more difficult stains, dampen a soft white cloth with a solution of household bleach (10% bleach / 90% water). Rub gently. Rinse with a water dampened cloth to remove bleach concentration.

Do not use solvent based or concentrated abrasive cleaning agents, lacquer thinners or nail polish remover as these may cause discolouration over a period of time.

Always test in an inconspicuous area first.

If care instructions don't deliver the expected results, cease cleaning method immediately and contact Baresque for assistance.

---

# WEFT

**Fabrics** » Vinyl and Faux Leather Fabrics

---

## Colour & Finish Options