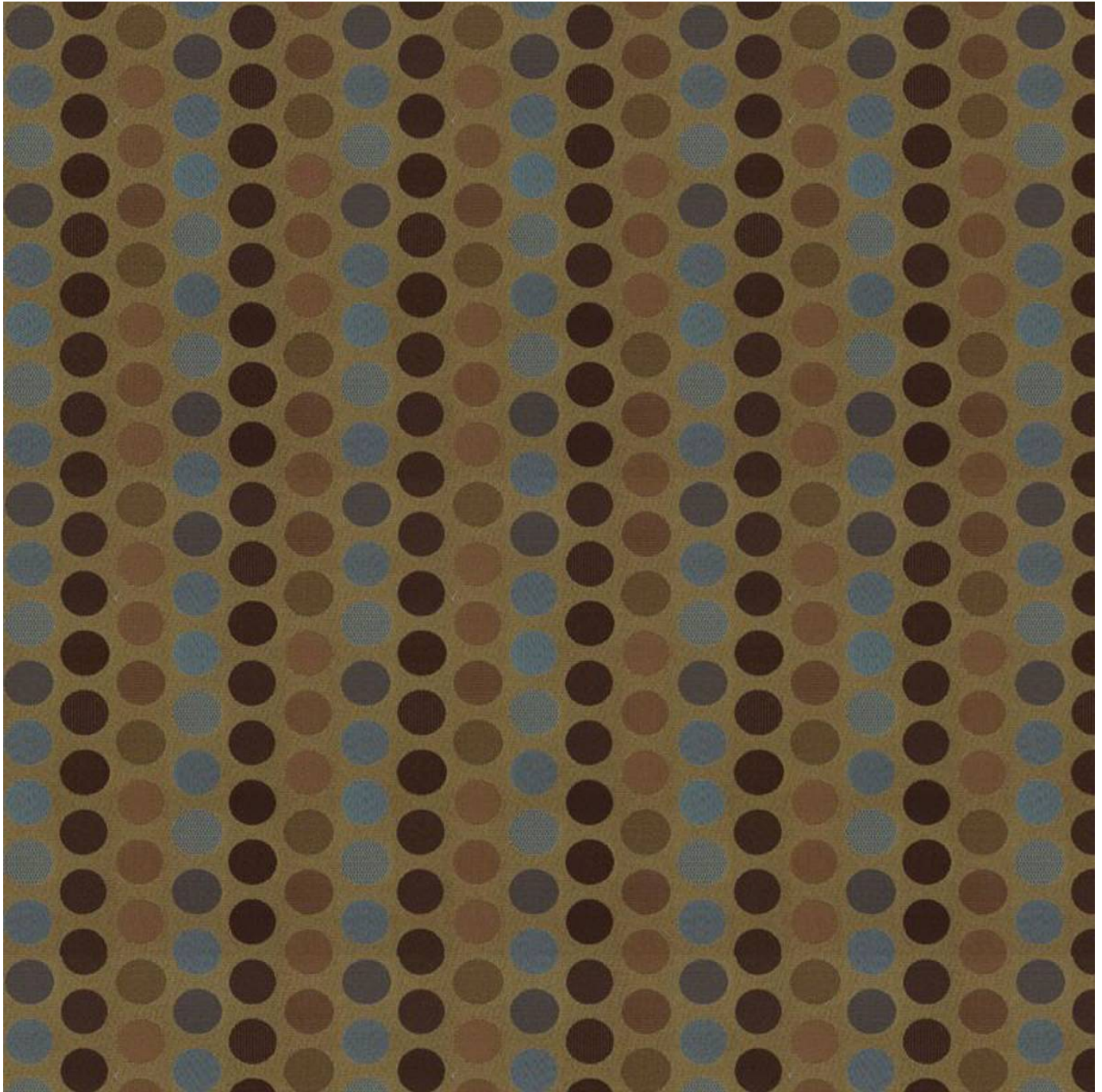


AUNT DOTTIE

Fabrics » Woven Fabrics



Brand: **Crypton**

Applications: **Upholstery**

1300 306 399

info@baresque.com.au

baresque.com.au

1 of 3

AUNT DOTTIE

Fabrics » Woven Fabrics

Aunt Dottie is a 137cm wide woven upholstery with a dot pattern that's available in 5 colours for indoor use

Description	CRYPTON is a permanent moisture, soil resistance and anti-microbial protection backing.
Composition	CRYPTON - 96% recycled polyester (27% post consumer), 4% polyester
Pattern Repeat Size	N/A
Roll Size	34236f0e-1f83-49fe-9b23-330b6d14759a
Abrasion	100,000 + double rubs Wyzenbeek
Fire Rating	This product can be treated with a fire retardant that will ensure it meets Australian Standard 1530.3. Contact Baresque for details.
Lead Time	<ul style="list-style-type: none">• 2-weeks (approx.) from Wednesday, subject to stock availability.• Additional 1-week for Western Australia.• Express delivery is available subject to a surcharge. Contact Baresque for details and pricing.
Care Instructions	<p>Mix 5 parts water with 1 part of an enzyme laundry detergent to have a mixture that works well on all stains.</p> <p>Most liquid spills simply blot off the surface with a dry towel. If a stain remains, follow these simple steps:</p> <ol style="list-style-type: none">1. Remove excess soil, and apply the soap mixture on the stained area2. Allow solution to remain on stain for 1 minute3. Blot up the stain with a dry, clean towel, rinse any remaining soap and blot the area again <p>Repeat these steps if a spot still remains. If agitation is necessary, spray the stained area and work the stain using a soft brush or edge of spoon from outside of spot toward the middle. Blot and rinse to remove any soap.</p>
Warranty	2-year warranty. Visit baresque.com.au/warranty for complete details.

AUNT DOTTIE

Fabrics » Woven Fabrics

Colour & Finish Options



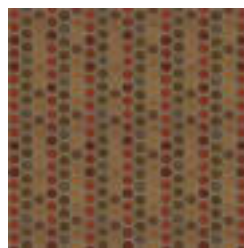
CG8712-05 ADOBE



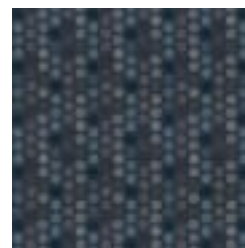
CG8712-04 BAILEY



CG8712-01 GREEN
TEA



CG8712-06 KARMA



CG8712-02 OCEAN