

BLOOM IN SEASON

Fabrics » Woven Fabrics



Brand: **United Fabrics**

Collections: **In Season**

Applications: **Upholstery**

1300 306 399

info@baresque.com.au

baresque.com.au

1 of 3

BLOOM IN SEASON

Fabrics » Woven Fabrics

Bloom - Inseason is a 137cm wide woven upholstery with a floral pattern that's suitable for indoor or outdoor.

✓ **Bleach Cleanable**

✓ **Outdoor Suitable**

Composition 67% Solspun Olefin / 33% polyester. Three (3) year yarn guarantee for colorfastness and against degradation due to exposure to light and the elements.

Pattern Repeat Size 33.8cm V / 67.5cm H

Roll Size 137cm x 45.7m - Available by the lineal metre

Abrasion 30,000+ double rubs Wyzenbeek

Fire Rating This product can be treated with a fire retardant that will ensure it meets Australian Standard 1530.3. Contact Baresque for details.

Lead Time

- 2-weeks (approx.) from Wednesday, subject to stock availability.
- Additional 1-week for Western Australia.
- Express delivery is available subject to a surcharge. Contact Baresque for details and pricing.

Care Instructions

Always use a clean, white, soft cloth.

Clean in situ using a damp cloth and mild detergent. Sponge down afterwards with a clean, damp cloth.

Using a cloth to pat dry will help eliminate watermarks.

Ensure the pile is brushed back to its natural direction.

Upholstered furniture should be regularly vacuumed or brushed with a soft nylon brush to remove grit or dust, which may damage the pile.

Never use stiff bristles or wire brushes, as they may damage the fabric.

Always test in an inconspicuous area first. If care instructions don't deliver the expected results, cease cleaning method immediately and contact Baresque for assistance.

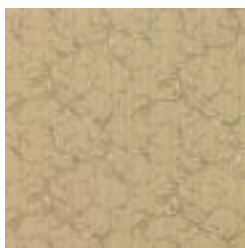
Warranty 2-year warranty. Visit baresque.com.au/warranty for complete details.

Additional Comments Search In Season to find other designs that coordinate with Bloom

BLOOM IN SEASON

Fabrics » Woven Fabrics

Colour & Finish Options



7253-0000 1000BA