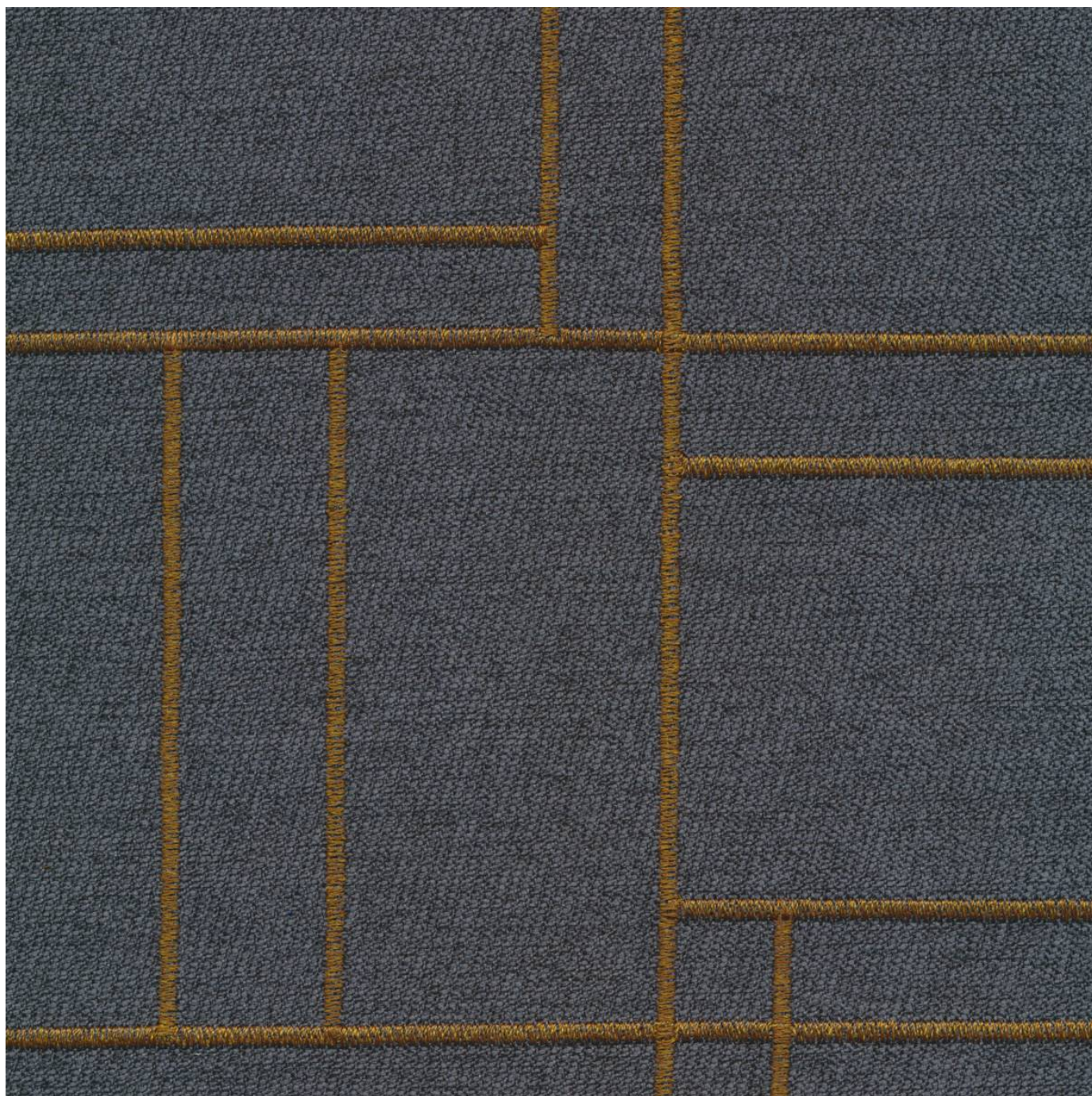


CUBIST

Fabrics » Woven Fabrics



Brand: **Concertex**

1300 306 399

info@baresque.com.au

baresque.com.au

1 of 4

CUBIST

Fabrics » Woven Fabrics

COLOURWAY CARD

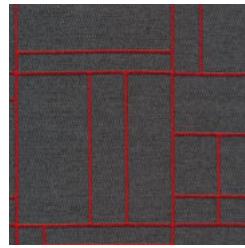
COLOURWAY CARD



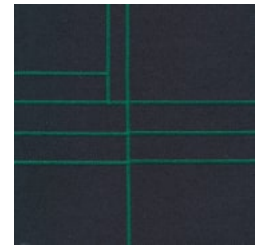
BOURBON



CHALK



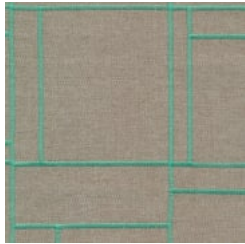
CHILLI



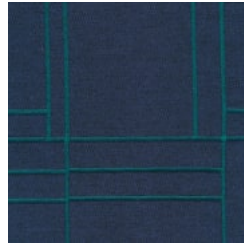
EMERALD



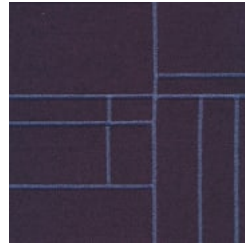
FLINT



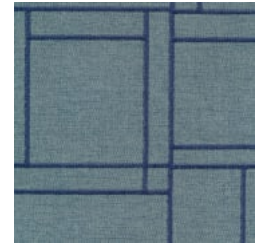
JADE



LAPIS



PLUM



SKY

CUBIST

Fabrics » Woven Fabrics

Cubist is a 137cm wide woven upholstery with a geometric pattern that's available in 9 colours. Anti-bacterial and bleach cleanable ideal for indoors

✓ **Bleach Cleanable**

✓ **Anti-Bacterial**

Roll Size 137cm x 27.4m - Available by the lineal metre

Composition 91% polyester, 9% acrylic

Abrasion 100,000 double rubs (Wyzenbeek)

Pattern Repeat Size 60.7cm V / 30.2cm H

Fire Rating This product can be treated with a fire retardant that will ensure it meets Australian Standard 1530.3. Contact Baresque for details.

Warranty 2-year warranty. Visit baresque.com.au/warranty for complete details.

Lead Time

- 2-weeks (approx.) from Wednesday, subject to stock availability.
- Additional 1-week for Western Australia.
- Express delivery is available subject to a surcharge. Contact Baresque for details and pricing.

Care Instructions

Always use a clean, white, soft cloth.

Clean in situ using a damp cloth and mild detergent. Sponge down afterwards with a clean, damp cloth.

Using a cloth to pat dry will help eliminate watermarks.

Ensure the pile is brushed back to its natural direction.

Upholstered furniture should be regularly vacuumed or brushed with a soft nylon brush to remove grit or dust, which may damage the pile.

Never use stiff bristles or wire brushes, as they may damage the fabric.

For more difficult stains, dampen a soft white cloth with a solution of household bleach (10% bleach / 90% water). Rub gently. Rinse with a water dampened cloth to remove bleach concentration.

Always test in an inconspicuous area first. If care instructions don't deliver the expected results, cease cleaning method immediately and contact Baresque for assistance.

CUBIST

Fabrics » Woven Fabrics

Colour & Finish Options