

# DECO

Fabrics » Woven Fabrics



Brand: **Sunbrella**

1300 306 399

[info@baresque.com.au](mailto:info@baresque.com.au)

[baresque.com.au](http://baresque.com.au)

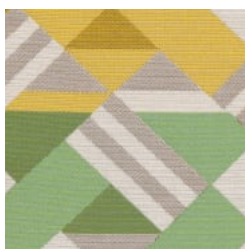
1 of 5

# DECO

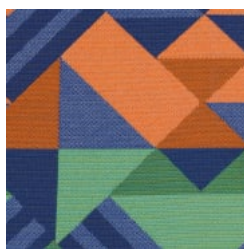
Fabrics » Woven Fabrics

## COLOURWAY CARD

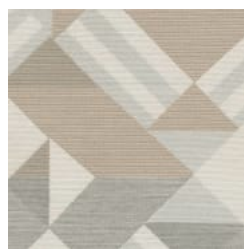
COLOURWAY CARD



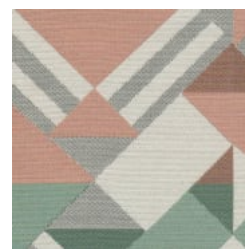
CACTUS



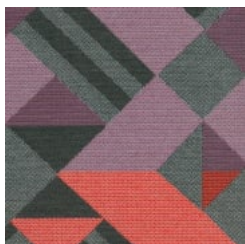
CARIBBEAN



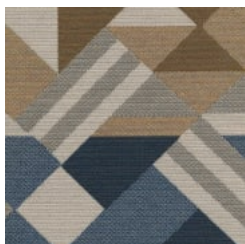
MERINGUE



MINT FLOWER



RED GRAPES



SAHARA



SALT WATER

# DECO

Fabrics » Woven Fabrics

Deco is a 137cm wide woven upholstery with a geometric pattern that's available in 7 colourways. Anti-bacterial, bleach cleanable easy to clean

✓ **Bleach Cleanable**

✓ **Outdoor Suitable**

✓ **Anti-Bacterial**

Roll Size 137cm x 45.7m - Available by the lineal metre

Composition 63% Sunbrella Acrylic, 37% Sunbrella polyester

Abrasion 75,000 double rubs (Wyzenbeek)

Pattern Repeat Size 35.5cm V / 18cm H

**Environmental Info** Based on life cycle assessment principles, NSF/ANSI 336 employs an easy-to-use point system to evaluate furnishings fabric against established prerequisite requirements, performance criteria and quantifiable metrics in eight areas - Fiber Sourcing, Safety of Material, Water Conservation and Water Quality, Energy, Recycling Practices, Air Quality in Manufacturing, Social Accountability

Certification to NSF/ANSI 336 is based on point total achieve a Compliant, Silver, Gold or Platinum level.

**Fire Rating** This product can be treated with a fire retardant that will ensure it meets Australian Standard 1530.3. Contact Baresque for details.

**Warranty** 2-year warranty. Visit [baresque.com.au/warranty](https://baresque.com.au/warranty) for complete details.

**Lead Time**

- 2-weeks (approx.) from Wednesday, subject to stock availability.
- Additional 1-week for Western Australia.
- Express delivery is available subject to a surcharge. Contact Baresque for details and pricing.

# DECO

Fabrics » Woven Fabrics

---

## Care Instructions

One of the best ways to keep fabrics looking good is to brush off dirt before it becomes embedded in the fabrics and wipe up spills or clean soon after a stain occurs. The quicker you clean spills and stains, the easier they can be to remove.

Avoid scrubbing or any other abrasive cleaning method. Never use stiff bristles or wire brushes, as they may damage the fabric.

Wipe material with a clean, soft cloth dampened with a mild solution of liquid detergent and warm water.

Repeat using only clean water, then dry with a lint free cloth or air dry.

Avoid using wax polishes, solvents or concentrated abrasives.

For more difficult stains, dampen a soft white cloth with a solution of household bleach (10% bleach / 90% water). Rub gently. Rinse with a water dampened cloth to remove bleach concentration.

Always test in an inconspicuous area first.

If care instructions don't deliver the expected results, cease cleaning method immediately and contact Baresque for assistance.

---

# DECO

Fabrics » Woven Fabrics

---

## Colour & Finish Options