

ENDUREPEL ASCEND STABILITY III

Fabrics » Woven Fabrics



Brand: **Endurepel**

1300 306 399

info@baresque.com.au

baresque.com.au

1 of 5

ENDUREPEL ASCEND STABILITY III

Fabrics » Woven Fabrics



37 TIDAL



76 CHILI



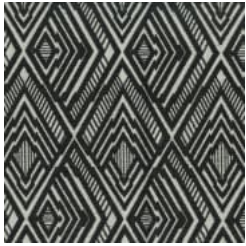
78 TANGO



89 TRUFFLE



93 SMOKE



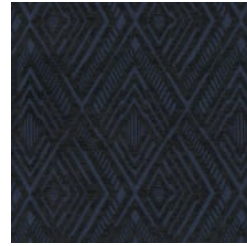
99 ZEBRA



102 QUARTZ



303 NAVAL



308 MIDNIGHT



508 MAIZE

ENDUREPEL ASCEND STABILITY III

Fabrics » Woven Fabrics

Endurepel Ascend is a 144cm wide woven upholstery with a diamond pattern that's available in 10 sober colours. Anti-bacterial and Easy to clean.

✓ **Moisture Repellant**

✓ **Anti-Bacterial**

✓ **Anti-Microbial**

Description Stability III is a collection of 80 contract-rated jacquards and solids finished with Endurepel Shield. Featuring a wide selection of textures, including soft chenilles the collection has contract-rated performance and washability making it perfect for a variety of markets including hospitality, aged care and commercial. The Endurepel Shield performance finish repels liquid and makes the upholsteries anti-microbial and anti-bacterial. Add Endurepel Barrier for a complete moisture barrier.

Roll Size 144cm x Approx 45m - 55m - Available by the lineal metre.

Composition Endurepel Shield - 100% polyester Add Endurepel Barrier for a complete moisture barrier.

Abrasion 75,000+ Double Rubs (Wyzenbeek)

Pattern Repeat Size 21cm V / 25cm H

Fire Rating Tested in accordance with AS1530.3
Spread of Flame Index - 0
Smoke Developed Index - 5

Warranty 2-year warranty. Visit baresque.com.au/warranty for complete details.

Lead Time

- 2-weeks (approx.) from Wednesday, subject to stock availability.
- Additional 1-week for Western Australia.
- Express delivery is available subject to a surcharge. Contact Baresque for details and pricing.

ENDUREPEL ASCEND STABILITY III

Fabrics » Woven Fabrics

Care Instructions

Always use a clean, white, soft cloth.

Clean in situ using a damp cloth and mild detergent. Sponge down afterwards with a clean, damp cloth.

Using a cloth to pat dry will help eliminate watermarks.

Ensure the pile is brushed back to its natural direction.

Upholstered furniture should be regularly vacuumed or brushed with a soft nylon brush to remove grit or dust, which may damage the pile.

Never use stiff bristles or wire brushes, as they may damage the fabric.

Always test in an inconspicuous area first. If care instructions don't deliver the expected results, cease cleaning method immediately and contact Baresque for assistance.

Additional Comments

Add Endurepel Barrier for full Moisture Barrier

ENDUREPEL ASCEND STABILITY III

Fabrics » Woven Fabrics

Colour & Finish Options