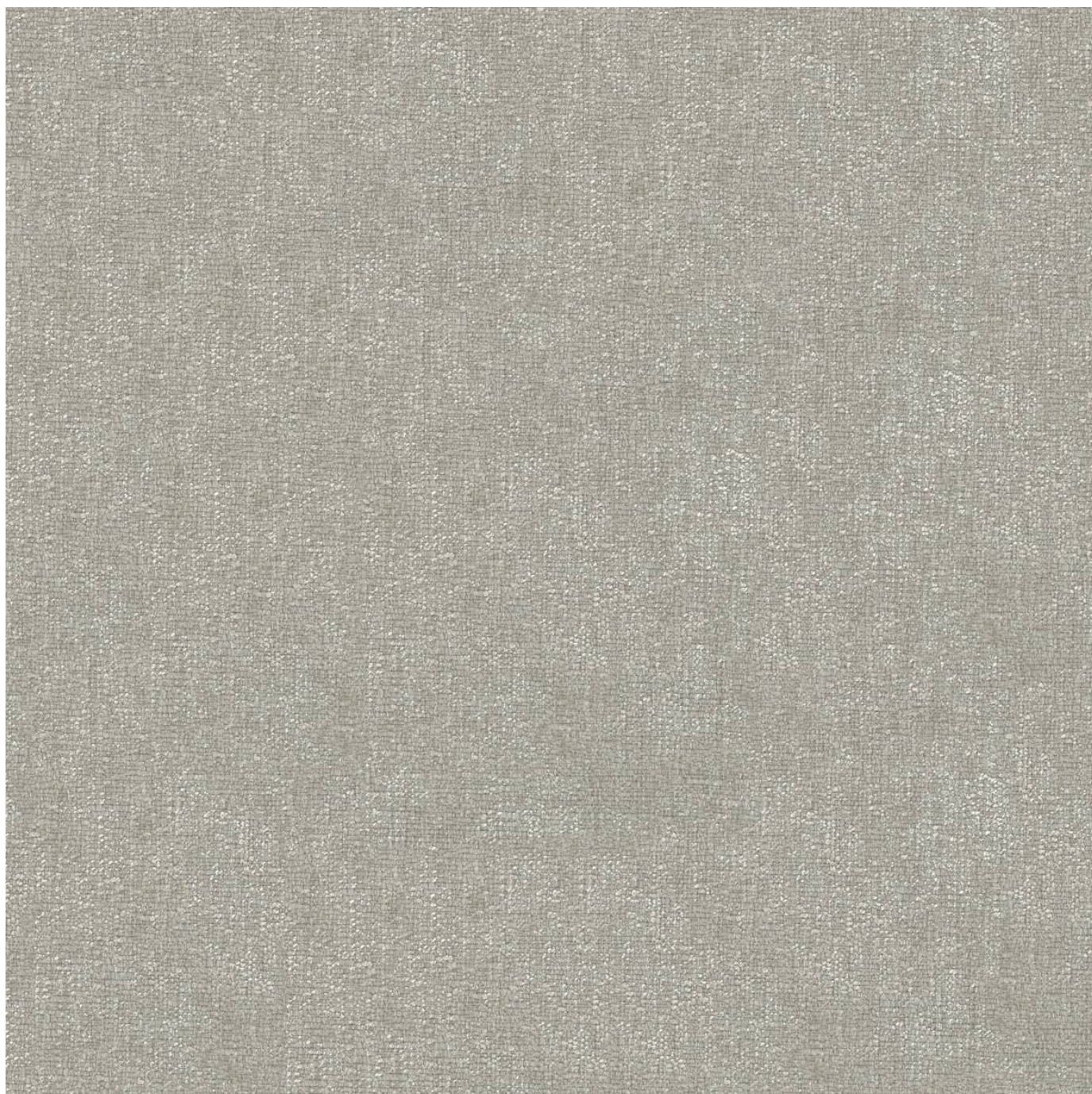


ENDUREPEL BOCA FUNDAMENTALS II

Fabrics » Woven Fabrics



Brand: **Endurepel**

1300 306 399

info@baresque.com.au

baresque.com.au

1 of 5

ENDUREPEL BOCA FUNDAMENTALS II

Fabrics » Woven Fabrics



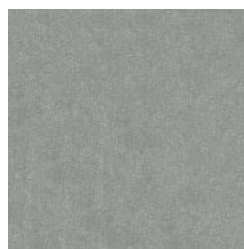
31 DUCK EGG



601 QUARTZ



603 STUCCO



62 DOVE

ENDUREPEL BOCA FUNDAMENTALS II

Fabrics » Woven Fabrics

Endurepel Boca is a 137cm wide woven upholstery that's available in 4 grey scale colours. Easy to clean, liquid repellent and anti-bacterial

✓ **Moisture Repellant**

✓ **Anti-Bacterial**

✓ **Anti-Microbial**

| | |
|---------------------|---|
| Description | The Fundamentals II range features 85 coordinating textures and semi-plains that come standard with Endurepel Shield performance finish to repel liquid and make the upholsteries anti-microbial and anti-bacterial. Add Endurepel Barrier for a complete moisture barrier. |
| Roll Size | 137cm x Approx 50m - Available by the lineal metre |
| Composition | Endurepel Shield - 100% polyester Add Endurepel Barrier for a complete moisture barrier |
| Abrasion | 60,000+ Double Rubs (Wyzenbeek) |
| Pattern Repeat Size | N/A |
| Fire Rating | Tested in accordance with AS1530.3 Spread of Flame Index - 0 Smoke Developed Index - 5 |
| Warranty | 2-year warranty. Visit baresque.com.au/warranty for complete details. |
| Lead Time | <ul style="list-style-type: none">• 3-weeks (approx) from Wednesday subject to stock availability.• Additional 1-week for Western Australia.• Additional 2 weeks for Endurepel Barrier.• Express delivery is available subject to a surcharge. Contact Baresque for details and pricing. |

ENDUREPEL BOCA FUNDAMENTALS II

Fabrics » Woven Fabrics

Care Instructions

Always use a clean, white, soft cloth.

Clean in situ using a damp cloth and mild detergent. Sponge down afterwards with a clean, damp cloth.

Using a cloth to pat dry will help eliminate watermarks.

Ensure the pile is brushed back to its natural direction.

Upholstered furniture should be regularly vacuumed or brushed with a soft nylon brush to remove grit or dust, which may damage the pile.

Never use stiff bristles or wire brushes, as they may damage the fabric.

Always test in an inconspicuous area first. If care instructions don't deliver the expected results, cease cleaning method immediately and contact Baresque for assistance.

Additional Comments

Add Endurepel Barrier for full Moisture Barrier

ENDUREPEL BOCA FUNDAMENTALS II

Fabrics » Woven Fabrics

Colour & Finish Options