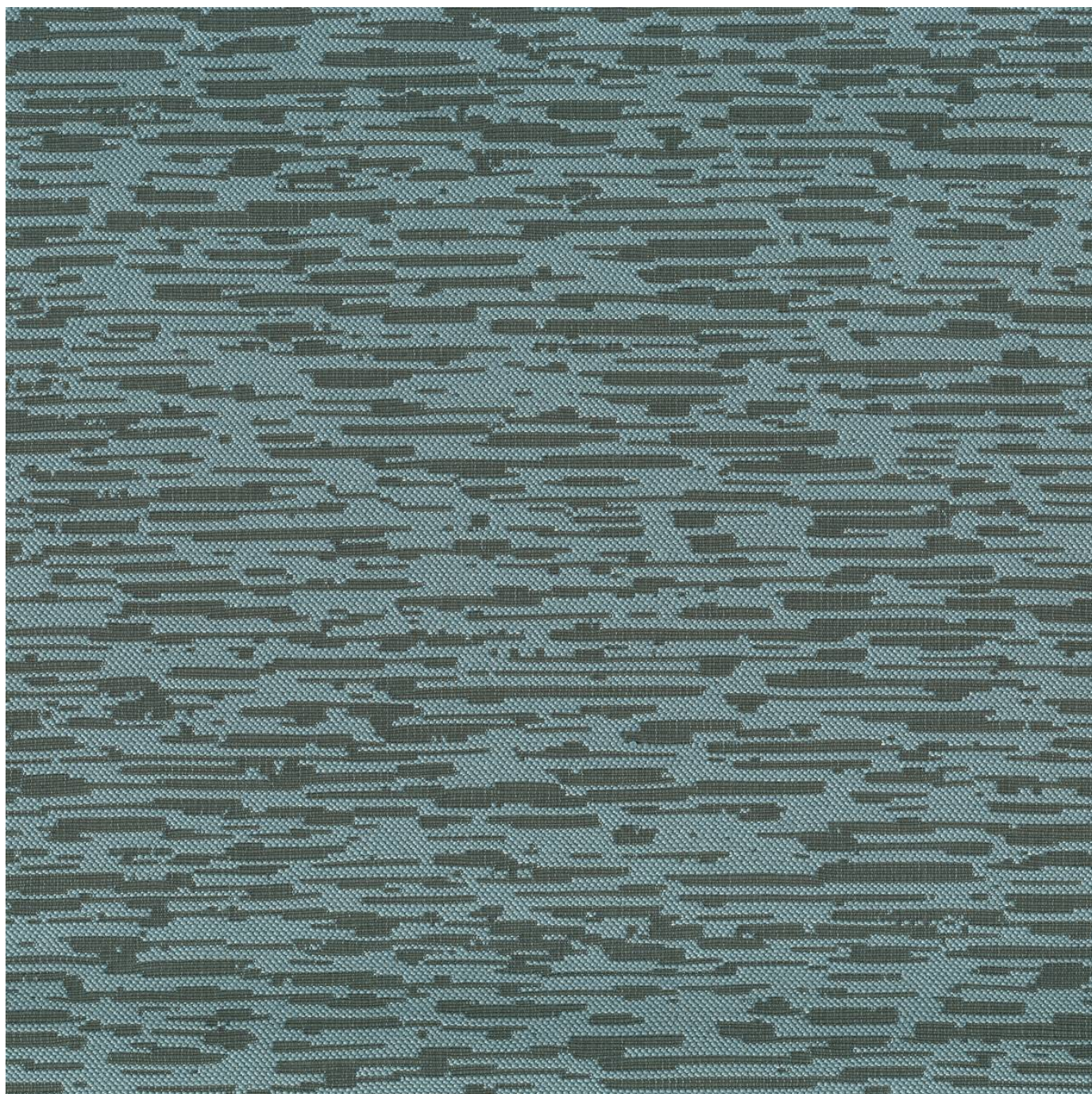


FRAGMENT ADVENTURE

Fabrics » Woven Fabrics



Brand: **Crypton**

Collection: **Adventure**

1300 306 399

info@baresque.com.au

baresque.com.au

1 of 5

FRAGMENT ADVENTURE

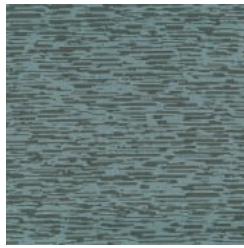
Fabrics » Woven Fabrics

COLOURWAY CARD

COLOURWAY CARD



3009 MIDNIGHT BLUE



37 LAGOON



61 VANILLA



8006 COCOA



87 CHESTNUT



9003 SMOKE



9006 GUNMETAL



9009 BLACK



97 IRON



baresque-fragment.jpg

FRAGMENT ADVENTURE

Fabrics » Woven Fabrics

Fragment-Adventure is a 140cm wide woven upholstery with a pattern featuring a small scale organic stria that creates texture. available in 9 colours

✓ **Bleach Cleanable**

✓ **Moisture Barrier**

Description CRYPTON is a permanent moisture, soil resistance and anti-microbial protection backing.

Roll Size 140cm x Approx 45m - 55m - Available by the lineal metre.

Composition CRYPTON - 88% polyester, 8% recycled post industrial polyester & 4% recycled post consumer polyester with Crypton Acrylic backing

Abrasion 75,000+ double rubs Wyzenbeek

Pattern Repeat Size RAILROADED - 38.7cm V / 37.8cm H

Fire Rating This product can be treated with a fire retardant that will ensure it meets Australian Standard 1530.3. Contact Baresque for details.

Warranty 2-year warranty. Visit baresque.com.au/warranty for complete details.

Lead Time

- 2-weeks (approx.) from Wednesday, subject to stock availability.
- Additional 1-week for Western Australia.
- Express delivery is available subject to a surcharge. Contact Baresque for details and pricing.

FRAGMENT ADVENTURE

Fabrics » Woven Fabrics

Care Instructions

Always use a clean, white, soft cloth.

Prepare a mixture of 1/3 Napisan and 2/3 Fab. Combine the mixture with water to make a paste about the consistency of soft margarine i.e. not too runny. Apply using a soft bristle brush. Leave for 10 minutes.

Use a brush and clean, warm water to remove the paste being sure to renew the water so that it remains clean.

Never use stiff bristles or wire brushes, as they may damage the fabric. To prevent soil build-up, frequent vacuuming is recommended.

Using a cloth to pat dry will help eliminate watermarks.

For more difficult stains, dampen a soft white cloth with a solution of household bleach (10% bleach / 90% water). Rub gently. Rinse with a water dampened cloth to remove bleach concentration.

Always test in an inconspicuous area first. If care instructions don't deliver the expected results, cease cleaning method immediately and contact Baresque for assistance.

FRAGMENT ADVENTURE

Fabrics » Woven Fabrics

Colour & Finish Options