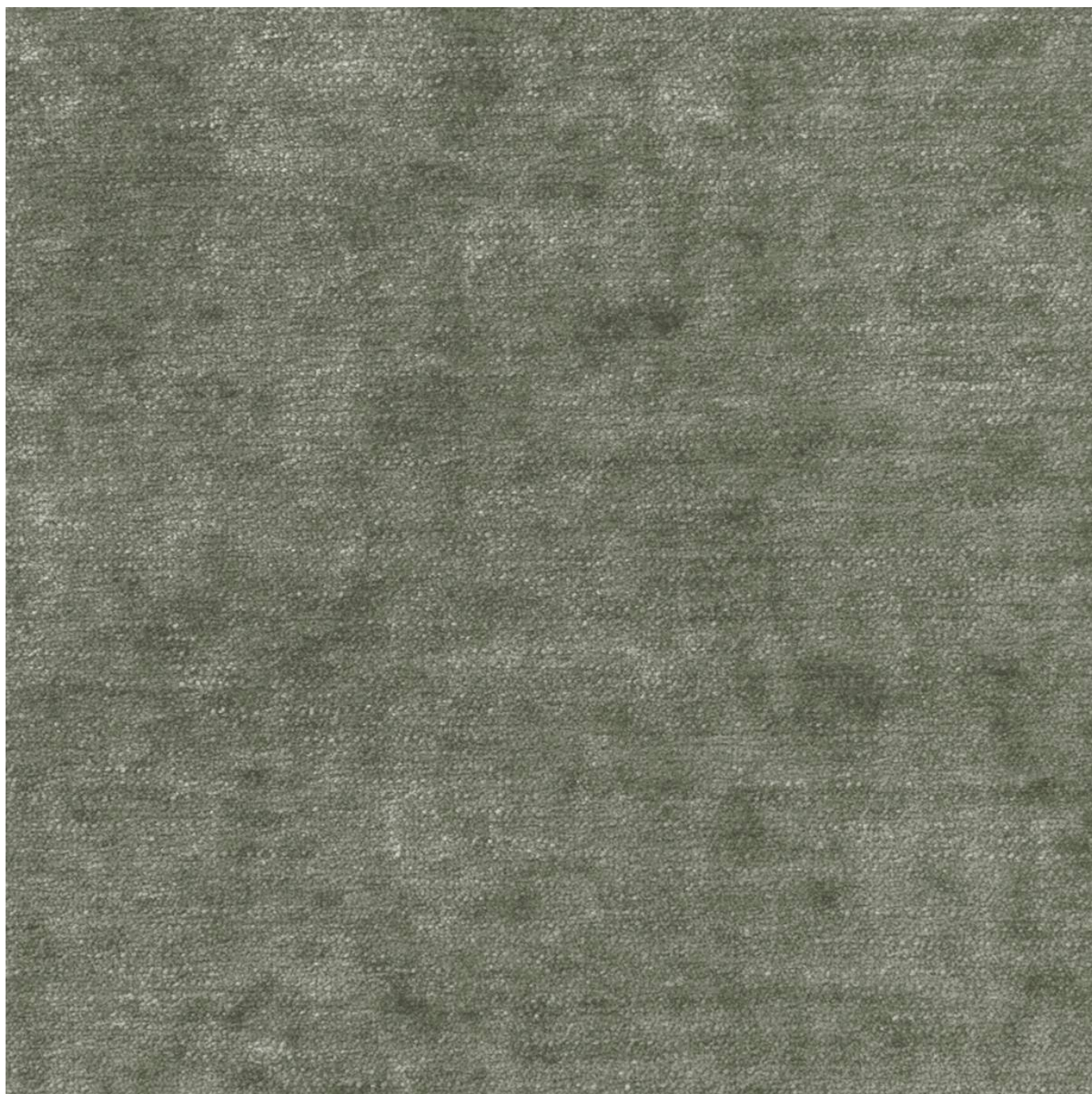


GLAMOUR

Fabrics » Woven Fabrics



Brand: **Crypton**

1300 306 399

info@baresque.com.au

baresque.com.au

1 of 5

GLAMOUR

Fabrics » Woven Fabrics

COLOURWAY CARD



1010307 AUTUMN



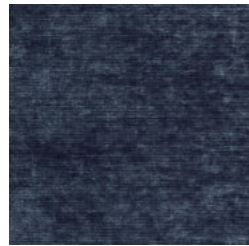
1010308 MINK



1010309 SAGE



1010310 PINE



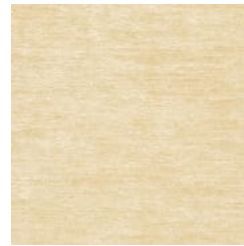
1010311 MIDNIGHT



1010312 ONYX



1010313 PARCHMENT



1010314 COCONUT



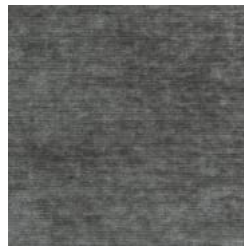
1010315 SMOKE



1010316 WISTERIA



1010317 SEAL



1010318 ANCHOR



1010319 ATLANTIC



1010320 OLIVE



1010321 MEDALLION



1010322 BLUSH

GLAMOUR

Fabrics » Woven Fabrics

Glamour is 137cm wide woven upholstery with a voluptuous chenille that resembles crushed velvet with a superbly soft hand. available in 16 colours.

✓ **Bleach Cleanable**

✓ **Moisture Barrier**

Description Glamour's voluptuous chenille resembles crushed velvet with a superbly soft hand. Glamour is the ideal fabric for adding opulence to a space without compromising durability. CRYPTON is a permanent moisture, soil resistance and anti-microbial protection backing.

Roll Size 137cm x Approx 45m - 55m - Available by the lineal metre

Composition CRYPTON - 100% polyester

Abrasion 50,000 double rubs (Wyzenbeek)

Pattern Repeat Size N/A

Fire Rating Tested in accordance with AS1530.3
Spread of Flame Index - 0
Smoke Developed Index - 5

Warranty 2-year warranty. Visit [baresque.com.au/warranty](https://www.baresque.com.au/warranty) for complete details.

Lead Time

- 2-weeks (approx.) from Wednesday, subject to stock availability.
- Additional 1-week for Western Australia.
- Express delivery is available subject to a surcharge. Contact Baresque for details and pricing.

Care Instructions

Always use a clean, white, soft cloth.

Prepare a mixture of 1/3 Napisan and 2/3 Fab. Combine the mixture with water to make a paste about the consistency of soft margarine i.e. not too runny. Apply using a soft bristle brush. Leave for 10 minutes.

Use a brush and clean, warm water to remove the paste being sure to renew the water so that it remains clean.

Never use stiff bristles or wire brushes, as they may damage the fabric. To prevent soil build-up, frequent vacuuming is recommended.

Using a cloth to pat dry will help eliminate watermarks.

For more difficult stains, dampen a soft white cloth with a solution of household bleach (10% bleach / 90% water). Rub gently. Rinse with a water dampened cloth to remove bleach concentration.

Always test in an inconspicuous area first. If care instructions don't deliver the expected results, cease cleaning method immediately and contact Baresque for assistance.

GLAMOUR

Fabrics » Woven Fabrics

Colour & Finish Options