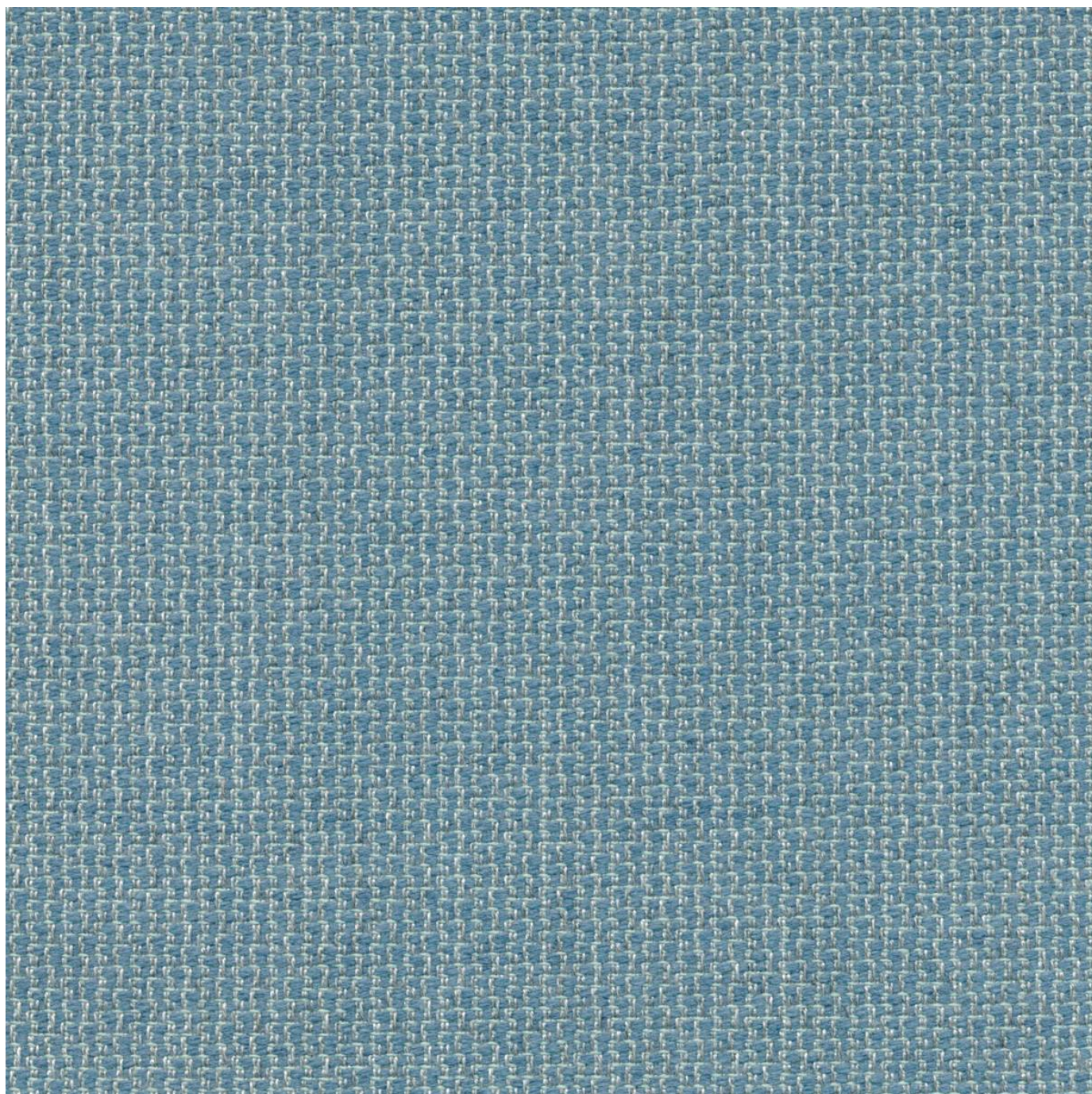


GRANITE

Fabrics » Woven Fabrics



Brand: **Sunbrella**

1300 306 399

info@baresque.com.au

baresque.com.au

1 of 4

GRANITE

Fabrics » Woven Fabrics

COLOURWAY CARD

COLOURWAY CARD



CHARCOAL



CITRON



CLOUD



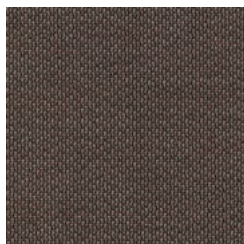
FLAX



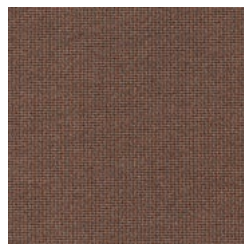
FLINT



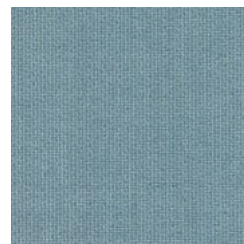
HAZEL



LOGWOOD



NUTMEG



SKY



SLATE



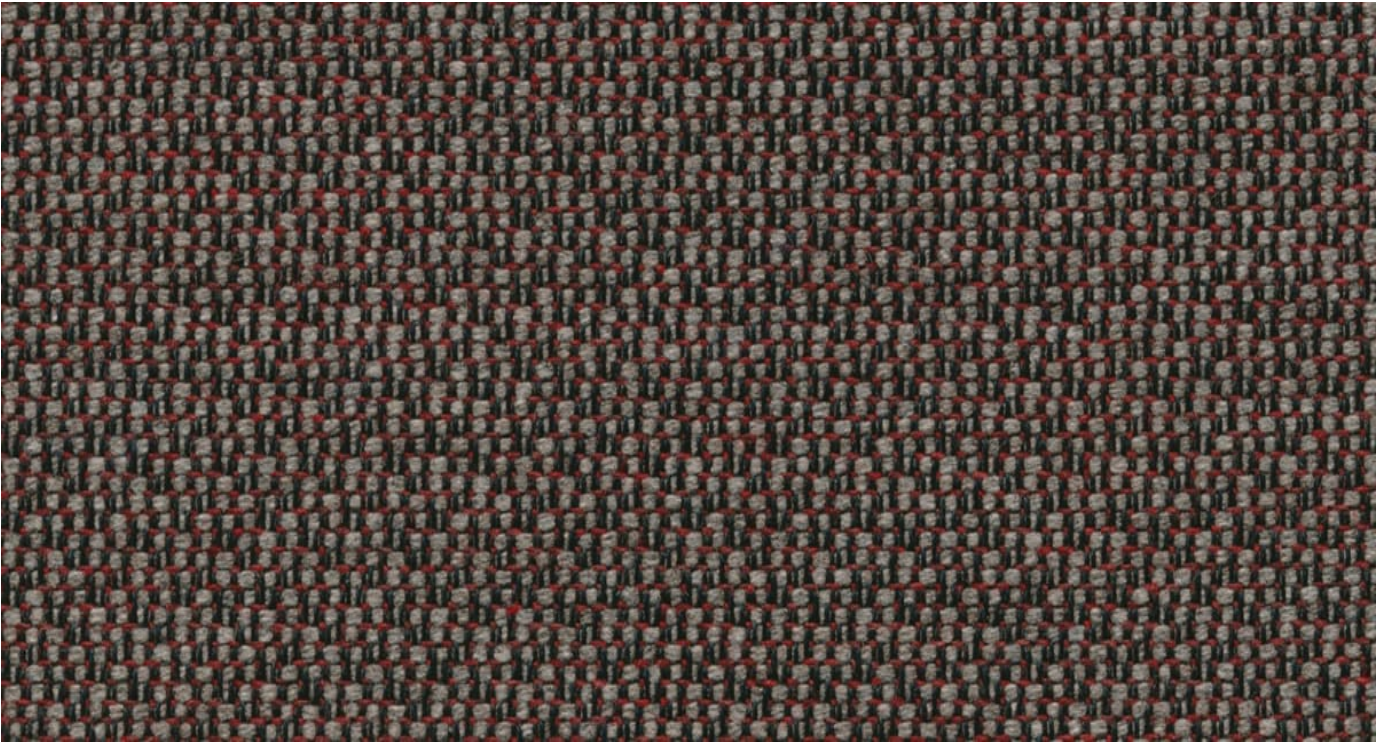
SNOW



TIDE

GRANITE

Fabrics » Woven Fabrics



Granite combines yarns with multiple fiber colours to create a soft, fluctuation in color that is reminiscent of wool that's available in 12 colours

- Bleach Cleanable
- Environmentally Friendly
- Extended Warranty
- Moisture Repellant
- Outdoor Suitable
- Solution Dyed Yarns

Description Playful and poised, Granite adds interest to a practical textile. The indoor/outdoor textural upholstery pairs beautifully with its counterpart Marble. Granite combines yarns with multiple fiber colors to create a soft, fluctuation in color that is reminiscent of wool. Constructed with Sunbrella yarns, a water and stain repellent finishing and boasting over 100,000 double rubs, the product is created to withstand the rigorous demands of high traffic areas. Offered in 12 usable colorways, including fresh hues and soft neutrals, Granite is the indoor/outdoor performance product every designer has been in search of.

Roll Size 137cm x Approx 45m - 55m - Available by the lineal metre

Composition 69% Sunbrella Acrylic, 30% Sunbrella Polyester, 1% polyester

Abrasion 100,000 double rubs (Wyzenbeek)

Pattern Repeat Size 0.6cm V / 1cm H

Environmental Info	greenguard-gold-facts-silver
Fire Rating	<p>Tested in accordance with AS1530.3</p> <p>Spread of Flame Index - 0</p> <p>Smoke Developed Index - 5</p>
Warranty	2-year warranty. Visit baresque.com.au/warranty for complete details.
Lead Time	<ul style="list-style-type: none">• 2-weeks (approx.) from Wednesday, subject to stock availability.• Additional 1-week for Western Australia.• Express delivery is available subject to a surcharge. Contact Baresque for details and pricing.
Care Instructions	<p>One of the best ways to keep fabrics looking good is to brush off dirt before it becomes embedded in the fabrics and wipe up spills or clean soon after a stain occurs. The quicker you clean spills and stains, the easier they can be to remove.</p> <p>Avoid scrubbing or any other abrasive cleaning method. Never use stiff bristles or wire brushes, as they may damage the fabric.</p> <p>Wipe material with a clean, soft cloth dampened with a mild solution of liquid detergent and warm water.</p> <p>Repeat using only clean water, then dry with a lint free cloth or air dry.</p> <p>Avoid using wax polishes, solvents or concentrated abrasives.</p> <p>For more difficult stains, dampen a soft white cloth with a solution of household bleach (10% bleach / 90% water). Rub gently. Rinse with a water dampened cloth to remove bleach concentration.</p> <p>Always test in an inconspicuous area first.</p> <p>If care instructions don't deliver the expected results, cease cleaning method immediately and contact Baresque for assistance.</p>