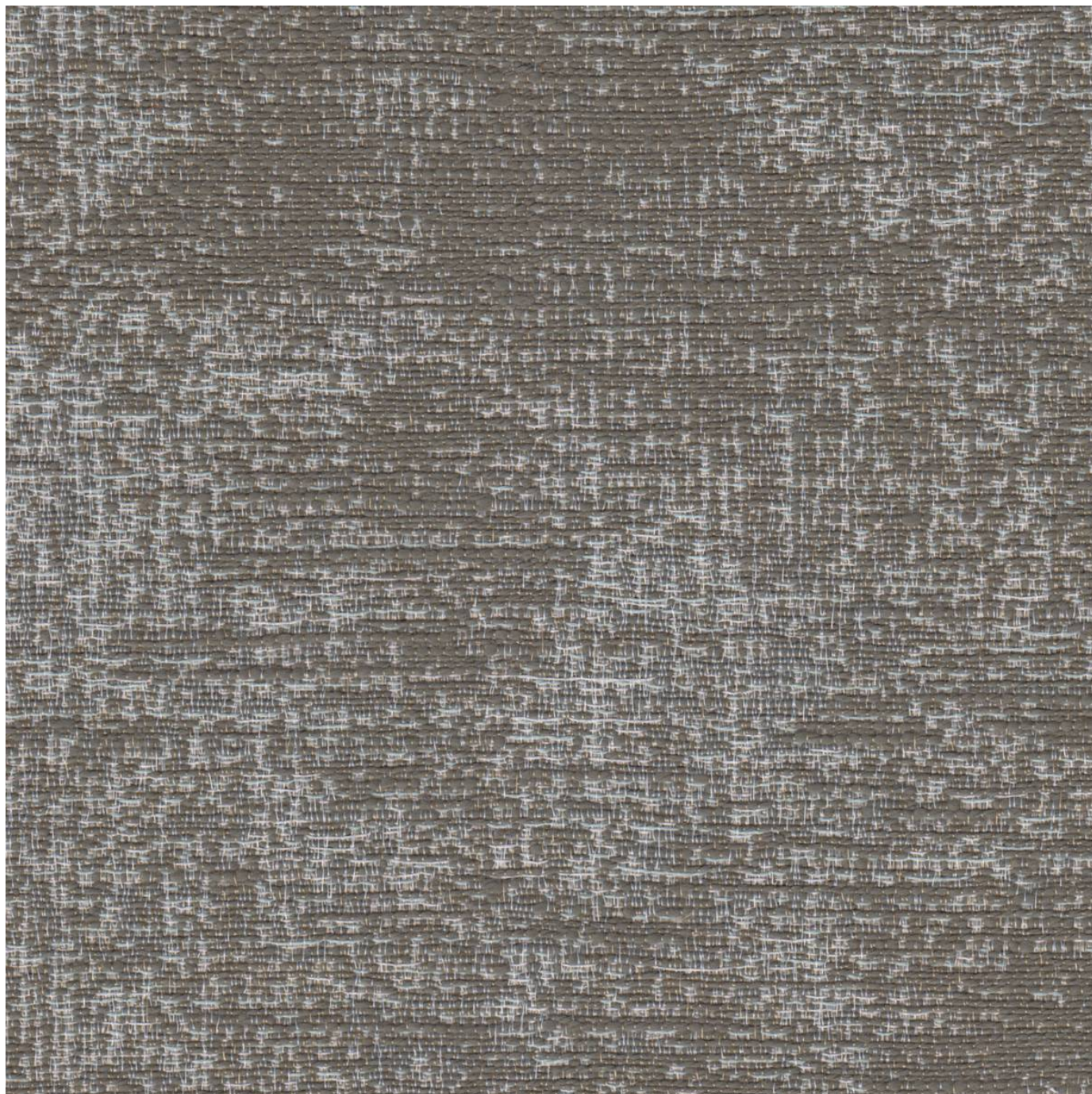


# HARMONY

Fabrics » Woven Fabrics

---



Brand: **Crypton**

1300 306 399

[info@baresque.com.au](mailto:info@baresque.com.au)

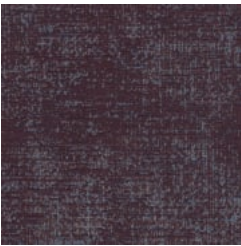
[baresque.com.au](http://baresque.com.au)

1 of 5

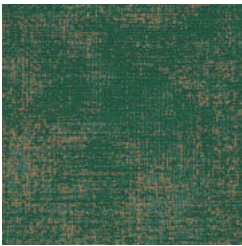


# HARMONY

Fabrics » Woven Fabrics



1010859 MYSTIC



1010860 EMERALD



1010861 PEACOCK



1010862 AZURE



1010863 CHAMBRAY



1010864 LAVENDER



1010865 PEONY



1010866 LAVA



1010867  
BUTTERSCOTCH



1010868 BISCOTTI



1010869 NORDIC



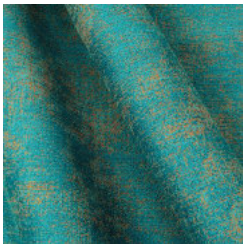
1010870 GILDED



1010871 VAPOR



harmony\_promo2.jpg



harmony\_promo4.jpg

# HARMONY

Fabrics » Woven Fabrics

Harmony is a 137cm wide woven upholstery with a soft texture that's available in 12 colours. Suitable for indoors

Description	Matt and sheen yarns coexist beautifully in this elegantly distressed textile. CRYPTON is a permanent moisture, soil resistance and anti-microbial protection backing.
Roll Size	137cm x Approx 45m - Available by the lineal metre
Composition	CRYPTON - 73% polyester, 16% nylon, 11% post consumer recycled polyester
Abrasion	63,000+ Double Rubs (Wyzenbeek)
Pattern Repeat Size	N/A
Fire Rating	This product can be treated with a fire retardant that will ensure it meets Australian Standard 1530.3. Contact Baresque for details.
Warranty	2-year warranty. Visit <a href="https://baresque.com.au/warranty">baresque.com.au/warranty</a> for complete details.
Lead Time	<ul style="list-style-type: none"><li>• 2-weeks (approx.) from Wednesday, subject to stock availability.</li><li>• Additional 1-week for Western Australia.</li><li>• Express delivery is available subject to a surcharge. Contact Baresque for details and pricing.</li></ul>

# HARMONY

Fabrics » Woven Fabrics

---

## Care Instructions

Always use a clean, white, soft cloth.

Prepare a mixture of 1/3 Napisan and 2/3 Fab. Combine the mixture with water to make a paste about the consistency of soft margarine i.e. not too runny. Apply using a soft bristle brush. Leave for 10 minutes.

Use a brush and clean, warm water to remove the paste being sure to renew the water so that it remains clean.

Never use stiff bristles or wire brushes, as they may damage the fabric. To prevent soil build-up, frequent vacuuming is recommended.

Using a cloth to pat dry will help eliminate watermarks.

For more difficult stains, dampen a soft white cloth with a solution of household bleach (10% bleach / 90% water). Rub gently. Rinse with a water dampened cloth to remove bleach concentration.

Always test in an inconspicuous area first. If care instructions don't deliver the expected results, cease cleaning method immediately and contact Baresque for assistance.

---

# HARMONY

Fabrics » Woven Fabrics

---

## Colour & Finish Options