

# INFLUENCE EXCELLENCE

Fabrics » Woven Fabrics



Brand: **Crypton**

Collection: **Excellence**

1300 306 399

[info@baresque.com.au](mailto:info@baresque.com.au)

[baresque.com.au](http://baresque.com.au)

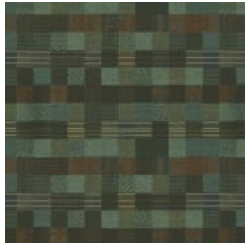
1 of 5

# INFLUENCE EXCELLENCE

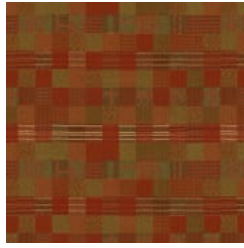
Fabrics » Woven Fabrics



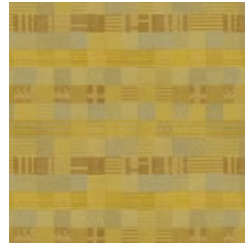
INFLU19 CLARET



INFLU37 LAGOON



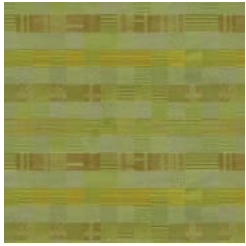
INFLU44 PUMPKIN



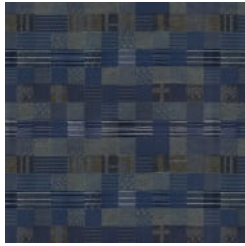
INFLU51 YELLOW



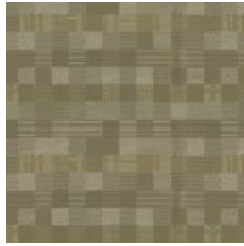
INFLU87 CHESTNUT



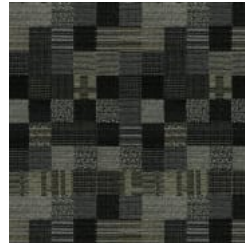
INFLU205 SPRIG



INFLU305 DENIM



INFLU608 LINEN



INFLU905 STEEL



INFLU6009  
CHINCHILLA

# INFLUENCE EXCELLENCE

Fabrics » Woven Fabrics

Influence - Excellence is a 140 cm wide woven upholstery with a small patchwork box pattern of varying colours and textures. Available in 10 colours.

✓ **Bleach Cleanable**

✓ **Moisture Barrier**

**Description** CRYPTON is a permanent moisture, soil resistance and anti-microbial protection backing.

**Roll Size** 140cm x Approx 45m - 55m - Available by the lineal metre.

**Composition** CRYPTON - 40% cotton / 41% polyester / 9% recycled post consumer polyester

**Abrasion** 50,000+ Double Rubs (Wyzenbeek)

**Pattern Repeat Size** 5.3cm V / 7.5cm H

**Fire Rating** This product can be treated with a fire retardant that will ensure it meets Australian Standard 1530.3. Contact Baresque for details.

**Warranty** 2-year warranty. Visit [baresque.com.au/warranty](https://baresque.com.au/warranty) for complete details.

**Lead Time**

- 2-weeks (approx.) from Wednesday, subject to stock availability.
- Additional 1-week for Western Australia.
- Express delivery is available subject to a surcharge. Contact Baresque for details and pricing.

# INFLUENCE EXCELLENCE

Fabrics » Woven Fabrics

---

## Care Instructions

Always use a clean, white, soft cloth.

Prepare a mixture of 1/3 Napisan and 2/3 Fab. Combine the mixture with water to make a paste about the consistency of soft margarine i.e. not too runny. Apply using a soft bristle brush. Leave for 10 minutes.

Use a brush and clean, warm water to remove the paste being sure to renew the water so that it remains clean.

Never use stiff bristles or wire brushes, as they may damage the fabric. To prevent soil build-up, frequent vacuuming is recommended.

Using a cloth to pat dry will help eliminate watermarks.

For more difficult stains, dampen a soft white cloth with a solution of household bleach (10% bleach / 90% water). Rub gently. Rinse with a water dampened cloth to remove bleach concentration.

Always test in an inconspicuous area first. If care instructions don't deliver the expected results, cease cleaning method immediately and contact Baresque for assistance.

---

# INFLUENCE EXCELLENCE

Fabrics » Woven Fabrics

---

## Colour & Finish Options