

JEFFERY FUNDAMENTALS

Fabrics » Woven Fabrics



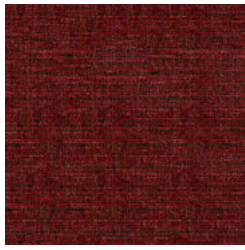
Brand: **Ennis Fabrics**

JEFFERY FUNDAMENTALS

Fabrics » Woven Fabrics



JEFFE 14 PEONY



JEFFE 17 CHILI RED



JEFFE 22 CELADON



JEFFE 44 CELESTE
ORANGE



JEFFE 67 COSMIC
LATTE



JEFFE 82 STONE



JEFFE 102



JEFFE 103 WISTERIA



JEFFE 105 RAZZMIC
BERRY



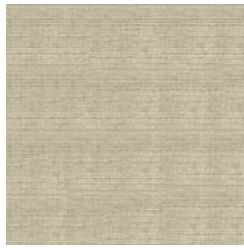
JEFFE 202 ABSINTHE



JEFFE 309 INDIGO



JEFFE 405 PUMPKIN
SPICE



JEFFE 602 CORNSILK



JEFFE 605
PARCHMENT



JEFFE 608 BEIGE



JEFFE 655 MAIZE



JEFFE 708 FLATTERY



JEFFE 902 STUCCO



JEFFE 1009 ZANTIUM



JEFFE 3003 PLACID
BLUE



JEFFE 3006 DENIM
BLUE



JEFF 6003 OATMEAL



JEFF 6004 BUFF



JEFF 6009 COCOA



JEFF 7003
SEABREEZE

JEFFERY FUNDAMENTALS

Fabrics » Woven Fabrics



JEFF 9003
GAINSBORO



JEFF 9006
BATTLESHIP GREY

JEFFERY FUNDAMENTALS

Fabrics » Woven Fabrics

Jeffery is a 144cm wide woven upholstery that is water repellent, easy to clean and anti-bacterial. Suitable for indoor. available in 26 colours

Roll Size 144cm x Approx 45m - 55m - Available by the lineal metre.

Composition 100% polyester with an acrylic kiss coat backing

Abrasion 80,000+ Double Rubs (Wyzenbeek)

Pattern Repeat Size N/A

Fire Rating This product can be treated with a fire retardant that will ensure it meets Australian Standard 1530.3. Contact Baresque for details.

Warranty 2-year warranty. Visit [baresque.com.au/warranty](https://www.baresque.com.au/warranty) for complete details.

Lead Time

- 2-weeks (approx.) from Wednesday, subject to stock availability.
- Additional 1-week for Western Australia.
- Express delivery is available subject to a surcharge. Contact Baresque for details and pricing.

Care Instructions

Always use a clean, white, soft cloth.

Clean in situ using a damp cloth and mild detergent. Sponge down afterwards with a clean, damp cloth.

Using a cloth to pat dry will help eliminate watermarks.

Ensure the pile is brushed back to its natural direction.

Upholstered furniture should be regularly vacuumed or brushed with a soft nylon brush to remove grit or dust, which may damage the pile.

Never use stiff bristles or wire brushes, as they may damage the fabric.

Always test in an inconspicuous area first. If care instructions don't deliver the expected results, cease cleaning method immediately and contact Baresque for assistance.

JEFFERY FUNDAMENTALS

Fabrics » Woven Fabrics

Colour & Finish Options