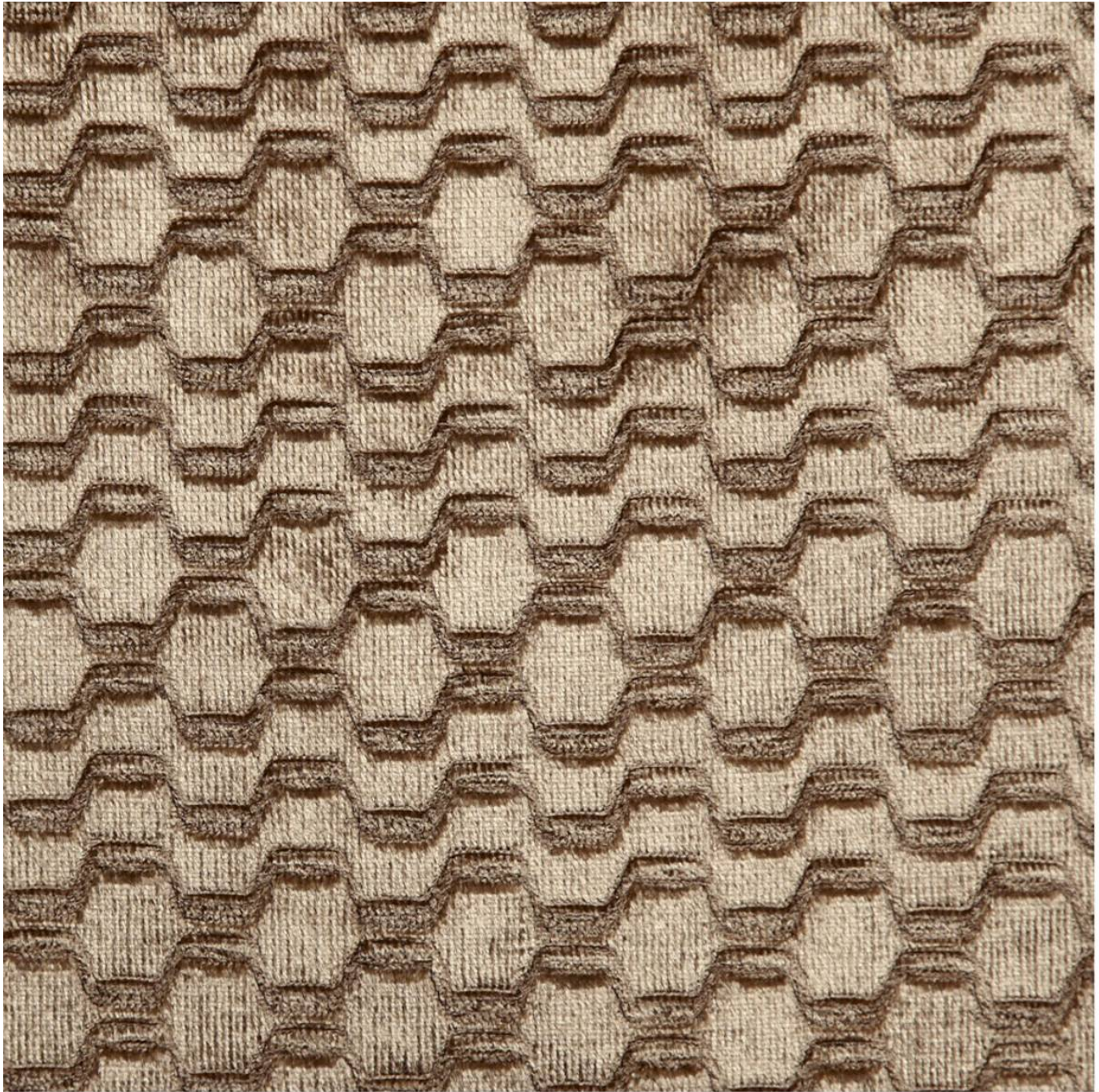


JEWEL VELVET

Fabrics » Woven Fabrics



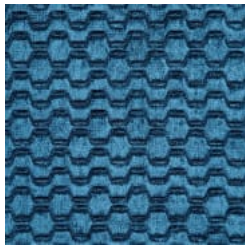
Brand: **Panaz**

JEWEL VELVET

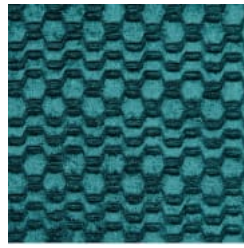
Fabrics » Woven Fabrics



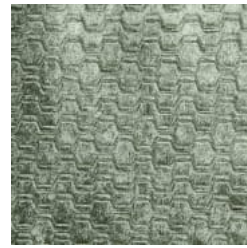
COLOURWAY CARD



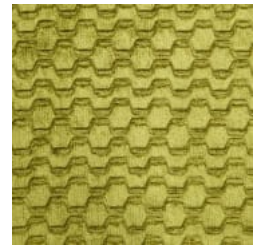
111 PEACOCK



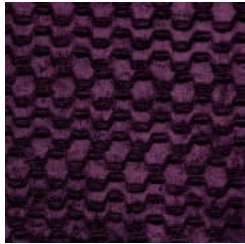
151 TEAL



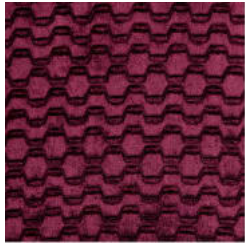
205 SAGE GREEN



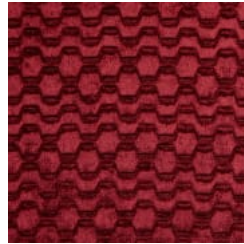
238 CITRUS



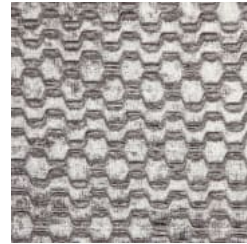
406 CLARET



414 WINE



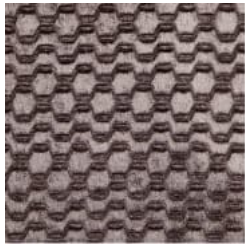
424 VERMILLION



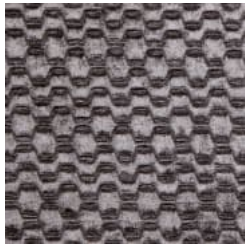
505 PEARL



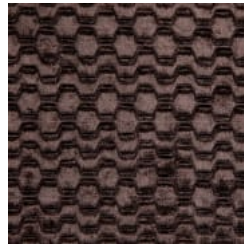
619 ROSEWOOD



703 MINK



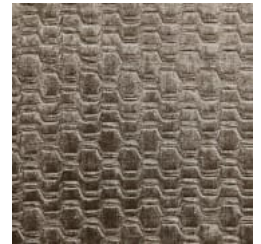
708 TRUFFLE



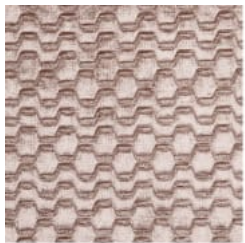
791 MOCHA



823 CHABLIS



858 COBBLE



877 OYSTER

JEWEL VELVET

Fabrics » Woven Fabrics

Jewel Velvet is a 140cm wide woven upholstery with an asymmetrical pattern that's available in 15 colourways. Suitable for indoors.

Roll Size 140cm x N/A - Available by the lineal metre. MINIMUM ORDER 4 METRES

Composition 100% polyester

Abrasion 102,000 double rubs Wyzenbeek

Pattern Repeat Size N/A

Fire Rating This product can be treated with a fire retardant that will ensure it meets Australian Standard 1530.3. Contact Baresque for details.

Warranty 2-year warranty. Visit baresque.com.au/warranty for complete details.

Lead Time

- 2-weeks (approx.) from Wednesday, subject to stock availability.
- Additional 1-week for Western Australia.
- Express delivery is available subject to a surcharge. Contact Baresque for details and pricing.

Care Instructions

Always use a clean, white, soft cloth.

Clean in situ using a damp cloth and mild detergent. Sponge down afterwards with a clean, damp cloth.

Using a cloth to pat dry will help eliminate watermarks.

Ensure the pile is brushed back to its natural direction.

Upholstered furniture should be regularly vacuumed or brushed with a soft nylon brush to remove grit or dust, which may damage the pile.

Never use stiff bristles or wire brushes, as they may damage the fabric.

Always test in an inconspicuous area first. If care instructions don't deliver the expected results, cease cleaning method immediately and contact Baresque for assistance.

JEWEL VELVET

Fabrics » Woven Fabrics

Colour & Finish Options