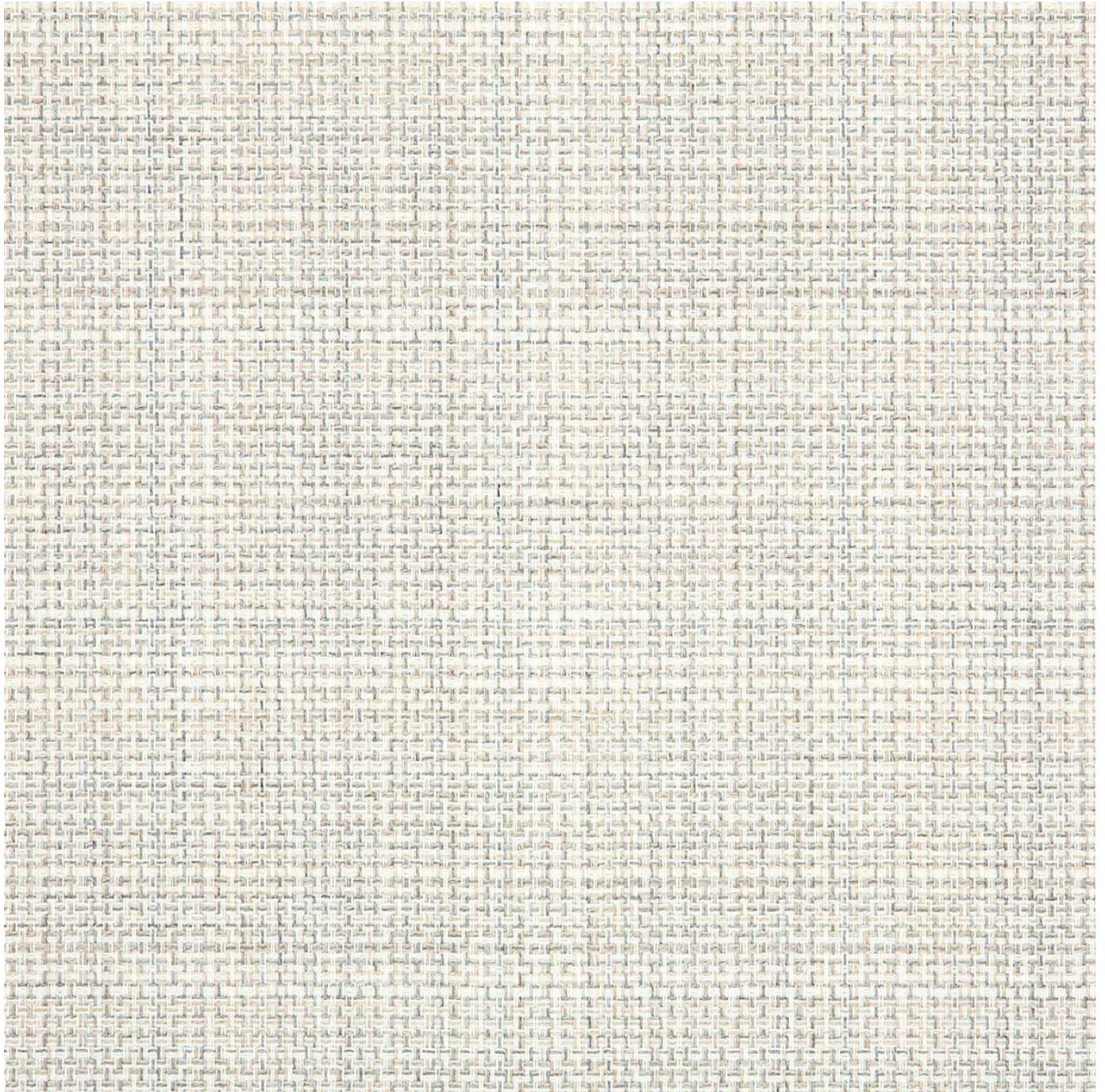


# LEVEL DIMENSION

Fabrics » Woven Fabrics



Brand: **Sunbrella**

1300 306 399

[info@baresque.com.au](mailto:info@baresque.com.au)

[baresque.com.au](http://baresque.com.au)

1 of 5

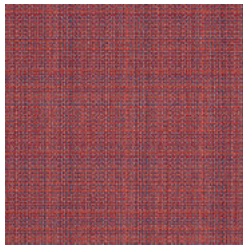
# LEVEL DIMENSION

Fabrics » Woven Fabrics

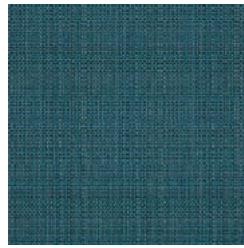
---



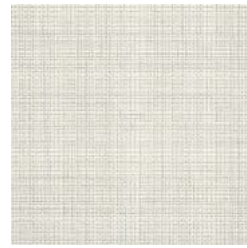
COLOURWAY CARD



44385-0001 SUNSET



44385-0002  
ATLANTIS



44385-0004 PUMICE

# LEVEL DIMENSION

Fabrics » Woven Fabrics

Level is a 137cm wide woven upholstery with a plain pattern with a combination of striated yarn rotations that's available in 3 colours.

- ✓ **Bleach Cleanable**
- ✓ **Environmentally Friendly**
- ✓ **Extended Warranty**
- ✓ **Moisture Repellant**
- ✓ **Outdoor Suitable**
- ✓ **Solution Dyed Yarns**

**Description** Fusing extraordinary plains with unique jacquards, the Dimension range of Sunbrella fabrics uses colour, texture and pattern to inspire dynamic settings. Each pattern introduces unexpected colour combinations, complex weave structures and striated yarn rotations that create exciting and distinctive textiles for use in every day spaces. Features + Benefits: \* Soil and stain repellent \* Bleach cleanable \* UV resistant \* Solution dyed yarns provide brilliant clear colour

**Roll Size** 137cm x Approx 55m - Available by the lineal metre

**Composition** 100% Sunbrella® Acrylic

**Abrasion** 60,000+ Double Rubs (Wyzenbeek)

**Pattern Repeat Size** 13.5cm V / 7.3cm H

**Environmental Info** Sunbrella fabrics are certified Greenguard Gold.

Greenguard addresses the human health component of sustainability with criteria among the most stringent indoor air quality standards in the world. Upholstery fabric that has achieved GREENGUARD Gold Certification has been shown to contribute to healthy indoor air as a product with low chemical and particle emissions.

The Greenguard Gold Certification standard includes health-based criteria for additional chemicals and also requires lower total VOC emissions levels to help ensure that products are acceptable for use in environments like schools and healthcare facilities.

In addition to limiting emissions of more than 360 VOCs and total chemical emissions, Greenguard Gold Certified products also comply with requirements of the state of California's Department of Public Health (CDPH) "Standard Method for the Test and Evaluation of Volatile Organic Chemical Emissions from Indoor Sources Using Environmental Chambers, Version 1.2 (2017)" (also know as California Section 01350).

Office Furniture products that are GREENGUARD Gold Certified are also compliant with the BIFMA X7.1 standard and BIFMA e3 credits 7.6.1, 7.6.2, and 7.6.3.



# LEVEL DIMENSION

Fabrics » Woven Fabrics

---

**Fire Rating**                      Tested in accordance with AS1530.3

   Spread of Flame Index - 0

   Smoke Developed Index - 5

---

**Warranty**                        2-year warranty. Visit [baresque.com.au/warranty](https://baresque.com.au/warranty) for complete details.

---

**Lead Time**                      • 2-weeks (approx.) from Wednesday, subject to stock availability.

   • Additional 1-week for Western Australia.

   • Express delivery is available subject to a surcharge. Contact Baresque for details and pricing.

---

**Care Instructions**            One of the best ways to keep fabrics looking good is to brush off dirt before it becomes embedded in the fabrics and wipe up spills or clean soon after a stain occurs. The quicker you clean spills and stains, the easier they can be to remove.

   Avoid scrubbing or any other abrasive cleaning method. Never use stiff bristles or wire brushes, as they may damage the fabric.

   Wipe material with a clean, soft cloth dampened with a mild solution of liquid detergent and warm water.

   Repeat using only clean water, then dry with a lint free cloth or air dry.

   Avoid using wax polishes, solvents or concentrated abrasives.

   For more difficult stains, dampen a soft white cloth with a solution of household bleach (10% bleach / 90% water). Rub gently. Rinse with a water dampened cloth to remove bleach concentration.

   Always test in an inconspicuous area first.

   If care instructions don't deliver the expected results, cease cleaning method immediately and contact Baresque for assistance.

---

# LEVEL DIMENSION

Fabrics » Woven Fabrics

---

## Colour & Finish Options