

LINEAR

Fabrics » Woven Fabrics



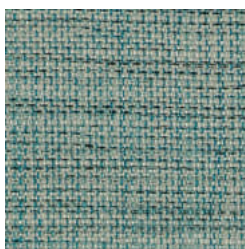
Brand: **Panaz**

LINEAR

Fabrics » Woven Fabrics



COLOURWAY CARD



182 TURQUOISE



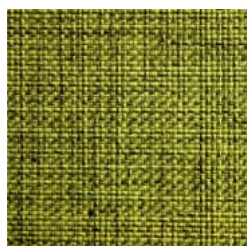
139 AQUA



192 INK



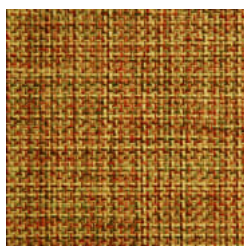
213 AUBERGINE



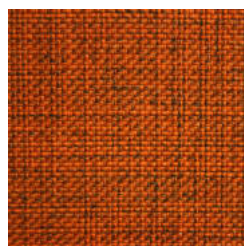
226 LIME



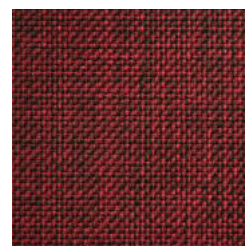
252 WILLOW



330 GOLDEN AMBER



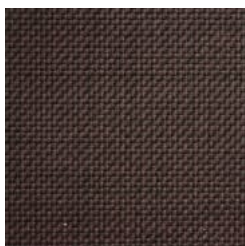
404 HENNA



407 BURGUNDY



624 MULBERRY



702 CHOCOLATE



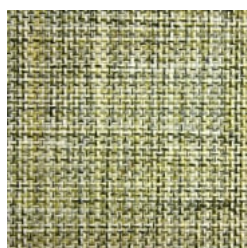
708 TRUFFLE



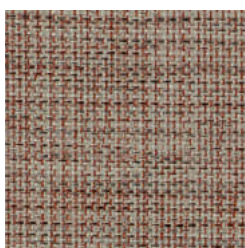
800 BEIGE



807 MUSHROOM



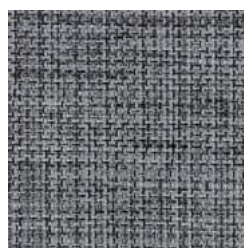
813 LINEN



848 CREAM



858 COBBLE



919 ZINC



953 GUNMETAL



995 BLACK



linear_promo-2.jpg

LINEAR

Fabrics » Woven Fabrics

Linear is a 140cm wide woven upholstery with a interlace yarn that's available in 20 colourways. Suitable for indoor.

Roll Size 140cm x N/A - Available by the lineal metre. MINIMUM ORDER 4 METRES

Composition 100% polyester

Abrasion 200,000 Martindale rubs

Pattern Repeat Size N/A

Fire Rating Tested in accordance with AS1530.3
Spread of Flame Index - 0
Smoke Developed Index - 5

Warranty 2-year warranty. Visit [baresque.com.au/warranty](https://www.baresque.com.au/warranty) for complete details.

Lead Time

- 2-weeks (approx.) from Wednesday, subject to stock availability.
- Additional 1-week for Western Australia.
- Express delivery is available subject to a surcharge. Contact Baresque for details and pricing.

Care Instructions

Always use a clean, white, soft cloth.

Clean in situ using a damp cloth and mild detergent. Sponge down afterwards with a clean, damp cloth.

Using a cloth to pat dry will help eliminate watermarks.

Ensure the pile is brushed back to its natural direction.

Upholstered furniture should be regularly vacuumed or brushed with a soft nylon brush to remove grit or dust, which may damage the pile.

Never use stiff bristles or wire brushes, as they may damage the fabric.

Always test in an inconspicuous area first. If care instructions don't deliver the expected results, cease cleaning method immediately and contact Baresque for assistance.

LINEAR

Fabrics » Woven Fabrics

Colour & Finish Options