

# MARBLE

Fabrics » Woven Fabrics

---



Brand: **Sunbrella**

# MARBLE

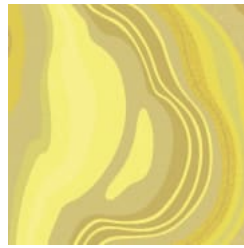
Fabrics » Woven Fabrics

## COLOURWAY CARD

COLOURWAY CARD



ALMOND MILK



LEMON PEEL



GREYSTONE



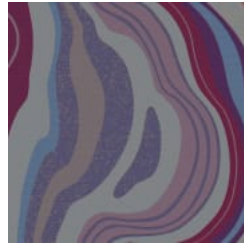
ROSE PETAL



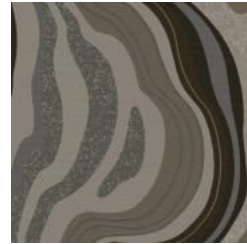
CLEARWATER



MULBERRY



PURPLE HAZE



BLACKWOOD



marble\_promo-1.jpg

# MARBLE

Fabrics » Woven Fabrics

Marble is a 137cm wide woven upholstery with a design that transforms the exquisite textures beneath rock formations. Available in 8 colourways.

- ✓ **Bleach Cleanable**
- ✓ **Environmentally Friendly**
- ✓ **Extended Warranty**
- ✓ **Moisture Repellent**
- ✓ **Outdoor Suitable**
- ✓ **Solution Dyed Yarns**

**Description** Marble transforms the exquisite textures revealed beneath rock formations into a scenic and serene textile. The indoor/outdoor fabric resembles a true work of art with its large-scale repeat. Offered in 8 sophisticated colorways, Marble is constructed with Sunbrella solution dyed acrylic and polyester yarns to allow for extreme lightfastness and durability (50,000 double rubs). The upholstery pattern has a stain resistant finishing, is bleach cleanable and eco-friendly with an ACT Facts Silver certification. Fit to lounge poolside and perfect for booth backs, Marble lends its layered beauty to any interior.

**Roll Size** 137cm x Approx 45m - Available by the lineal metre

**Composition** 98% Sunbrella Acrylic, 37% Sunbrella polyester

**Abrasion** 50,000 double rubs (Wyzenbeek)

**Pattern Repeat Size** 125cm V / 70cm H

**Environmental Info** Based on life cycle assessment principles, NSF/ANSI 336 employs an easy-to-use point system to evaluate furnishings fabric against established prerequisite requirements, performance criteria and quantifiable metrics in eight areas - Fiber Sourcing, Safety of Material, Water Conservation and Water Quality, Energy, Recycling Practices, Air Quality in Manufacturing, Social Accountability

Certification to NSF/ANSI 336 is based on point total achieve a Compliant, Silver, Gold or Platinum level.

**Fire Rating** Tested in accordance with AS1530.3

Spread of Flame Index - 0

Smoke Developed Index - 5

**Warranty** 2-year warranty. Visit [baresque.com.au/warranty](https://baresque.com.au/warranty) for complete details.

# MARBLE

Fabrics » Woven Fabrics

---

## Lead Time

- 2-weeks (approx.) from Wednesday, subject to stock availability.
  - Additional 1-week for Western Australia.
  - Express delivery is available subject to a surcharge. Contact Baresque for details and pricing.
- 

## Care Instructions

One of the best ways to keep fabrics looking good is to brush off dirt before it becomes embedded in the fabrics and wipe up spills or clean soon after a stain occurs. The quicker you clean spills and stains, the easier they can be to remove.

Avoid scrubbing or any other abrasive cleaning method. Never use stiff bristles or wire brushes, as they may damage the fabric.

Wipe material with a clean, soft cloth dampened with a mild solution of liquid detergent and warm water.

Repeat using only clean water, then dry with a lint free cloth or air dry.

Avoid using wax polishes, solvents or concentrated abrasives.

For more difficult stains, dampen a soft white cloth with a solution of household bleach (10% bleach / 90% water). Rub gently. Rinse with a water dampened cloth to remove bleach concentration.

Always test in an inconspicuous area first.

If care instructions don't deliver the expected results, cease cleaning method immediately and contact Baresque for assistance.

---

# MARBLE

Fabrics » Woven Fabrics

---

## Colour & Finish Options