

# MAYA IN SEASON

Fabrics » Woven Fabrics

---



Brand: **United Fabrics**

Collection: **In Season**

1300 306 399

[info@baresque.com.au](mailto:info@baresque.com.au)

[baresque.com.au](http://baresque.com.au)

1 of 4

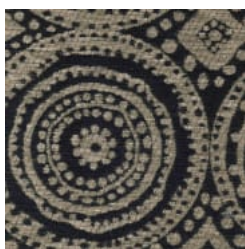
# MAYA IN SEASON

Fabrics » Woven Fabrics

---



31 HENNA



50 PEPPER



65 PUMICE

# MAYA IN SEASON

Fabrics » Woven Fabrics

Maya - In Season is a 137cm fabric for outdoor upholstery with a ethnic pattern that's available in 2 colourways. Suitable for indoor and outdoor.

✓ **Bleach Cleanable**

✓ **Outdoor Suitable**

Roll Size 137cm x 45.7m - Available by the lineal metre

Composition 84% Solspun Olefin / 16% polyester. Three (3) year yarn guarantee for colorfastness and against degradation due to exposure to light and the elements.

Abrasion 50,000+ double rubs Wyzenbeek

Pattern Repeat Size 16.3cm V / 16.3cm H

Fire Rating This product can be treated with a fire retardant that will ensure it meets Australian Standard 1530.3. Contact Baresque for details.

Warranty 2-year warranty. Visit [baresque.com.au/warranty](https://baresque.com.au/warranty) for complete details.

Lead Time

- 2-weeks (approx.) from Wednesday, subject to stock availability.
- Additional 1-week for Western Australia.
- Express delivery is available subject to a surcharge. Contact Baresque for details and pricing.

Care Instructions

Always use a clean, white, soft cloth.

Clean in situ using a damp cloth and mild detergent. Sponge down afterwards with a clean, damp cloth.

Using a cloth to pat dry will help eliminate watermarks.

Ensure the pile is brushed back to its natural direction.

Upholstered furniture should be regularly vacuumed or brushed with a soft nylon brush to remove grit or dust, which may damage the pile.

Never use stiff bristles or wire brushes, as they may damage the fabric.

Always test in an inconspicuous area first. If care instructions don't deliver the expected results, cease cleaning method immediately and contact Baresque for assistance.

# MAYA IN SEASON

Fabrics » Woven Fabrics

---

## Colour & Finish Options