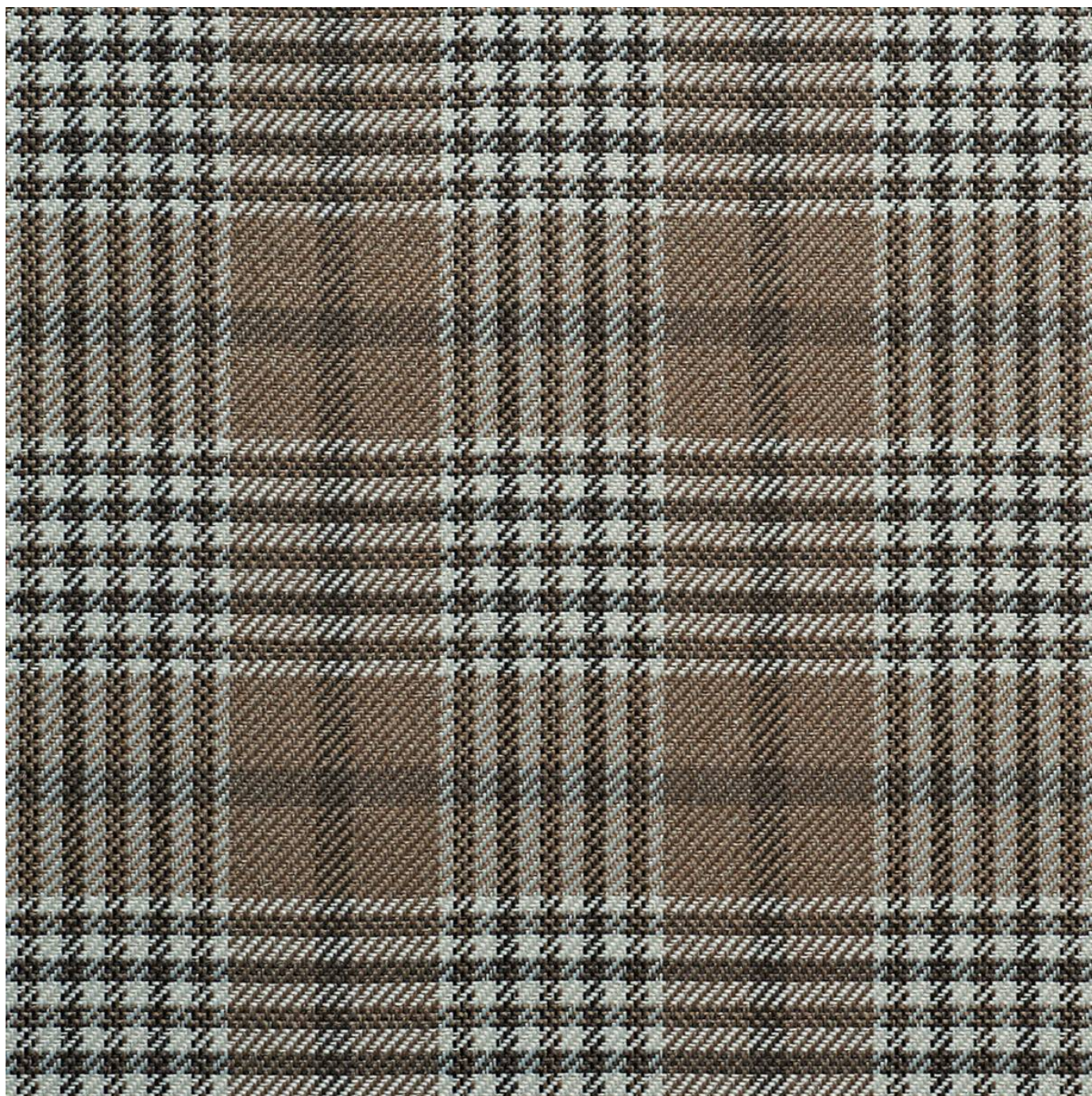


# MITCHELL PORTMAN

Fabrics » Woven Fabrics



Brand: **Panaz**

Applications: **Upholstery**

1300 306 399

[info@baresque.com.au](mailto:info@baresque.com.au)

[baresque.com.au](http://baresque.com.au)

1 of 4

# MITCHELL PORTMAN

Fabrics » Woven Fabrics

Mitchell is a 140cm wide woven upholstery with a traditional checkered pattern that's available in 3 colourways. Suitable for indoors

**Description** Portman is a collection of 6 sophisticated designs conveying sartorial elegance and refinement. Including checks of varying scale and a complimentary plain with micro herringbone detail, Portman's colour combinations of stylish greys and charcoal through to classic navy, emerald and heather, evoke a sense of tradition with a hint of the outdoors.

**Composition** 100% polyester

**Pattern Repeat Size** 7.9cm V / 7.4cm H

**Roll Size** 140cm x N/A - Available by the lineal metre. MINIMUM ORDER 4 METRES

**Abrasion** 100,000+ rubs Martindale

**Fire Rating** This product can be treated with a fire retardant that will ensure it meets Australian Standard 1530.3. Contact Baresque for details.

**Lead Time**

- 2-weeks (approx.) from Wednesday, subject to stock availability.
- Additional 1-week for Western Australia.
- Express delivery is available subject to a surcharge. Contact Baresque for details and pricing.

**Care Instructions**

Always use a clean, white, soft cloth.

Clean in situ using a damp cloth and mild detergent. Sponge down afterwards with a clean, damp cloth.

Using a cloth to pat dry will help eliminate watermarks.

Ensure the pile is brushed back to its natural direction.

Upholstered furniture should be regularly vacuumed or brushed with a soft nylon brush to remove grit or dust, which may damage the pile.

Never use stiff bristles or wire brushes, as they may damage the fabric.

Always test in an inconspicuous area first. If care instructions don't deliver the expected results, cease cleaning method immediately and contact Baresque for assistance.

# MITCHELL PORTMAN

Fabrics » Woven Fabrics

---

## Warranty

2-year warranty. Visit [baresque.com.au/warranty](https://www.baresque.com.au/warranty) for complete details.

---

# MITCHELL PORTMAN

Fabrics » Woven Fabrics

---

## Colour & Finish Options

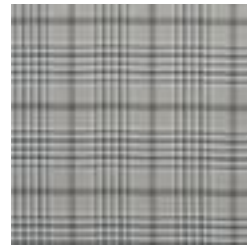
**COLOURWAY  
CARD**



800 BEIGE



851 FAWN/GREY



991 SILVER/BLACK

COLOURWAY CARD