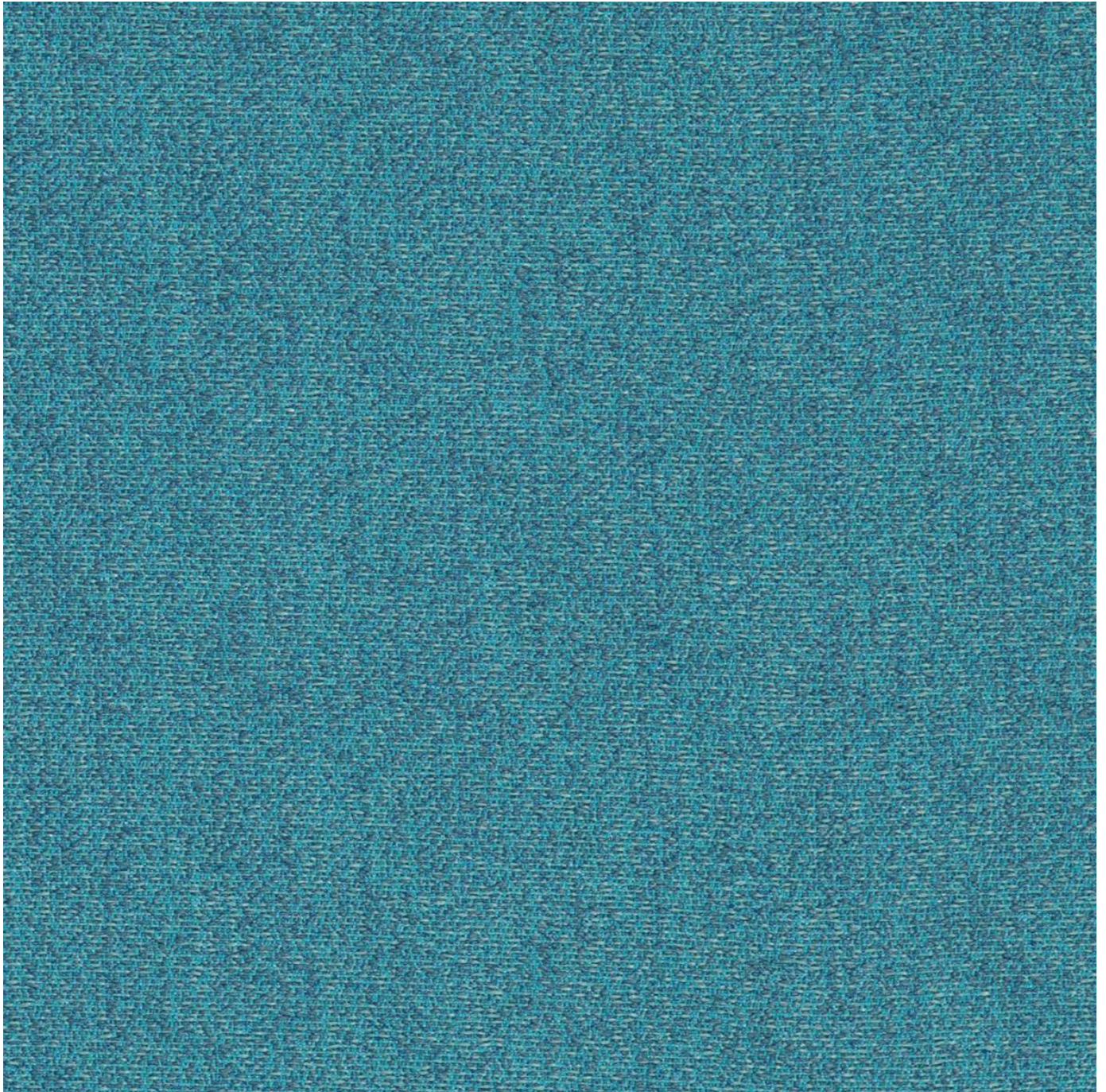


PIPELINE 1010

Fabrics » Woven Fabrics



Brand: **Burch**

1300 306 399

info@baresque.com.au

baresque.com.au

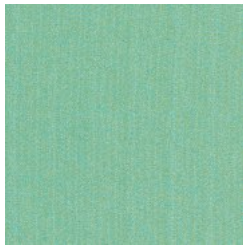
1 of 5

PIPELINE 1010

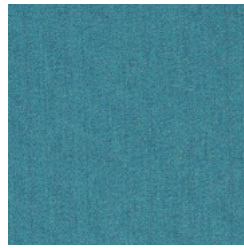
Fabrics » Woven Fabrics



COLOURWAY CARD



1010570 LAGOON



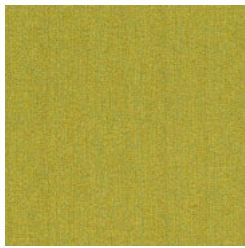
1010571 FOUNTAIN



1010572 OCEAN



1010573
BOYSENBERRY



1010576 PARAKEET



1010577 NORI



1010578 MUDSLIDE



1010579 BARNACLE



1010580 HAZE

PIPELINE 1010

Fabrics » Woven Fabrics

Pipeline is a 137cm wide fabric upholstery available in 12 colours. It's stain and UV resistant. Suitable for indoor or outdoor

✓ **Bleach Cleanable**

✓ **Outdoor Suitable**

Description

Pipeline by Bella-Dura is a versatile action plain with dimensional flecks of colour to mix and match with other elements in a space.

Features + Benefits:

- * Soil and stain repellent
- * Bleach cleanable
- * UV resistant
- * Solution dyed yarns provide brilliant clear colour

Roll Size

137cm x Approx 55m - Available by the lineal metre

Composition

100% Bella-Dura on an acrylic backing

Abrasion

75,000+ Double Rubs (Wyzenbeek)

Pattern Repeat Size

N/A

Environmental Info

Sunbrella fabrics are certified Greenguard Gold.

Greenguard addresses the human health component of sustainability with criteria among the most stringent indoor air quality standards in the world. Upholstery fabric that has achieved GREENGUARD Gold Certification has been shown to contribute to healthy indoor air as a product with low chemical and particle emissions.

The Greenguard Gold Certification standard includes health-based criteria for additional chemicals and also requires lower total VOC emissions levels to help ensure that products are acceptable for use in environments like schools and healthcare facilities.

In addition to limiting emissions of more than 360 VOCs and total chemical emissions, Greenguard Gold Certified products also comply with requirements of the state of California's Department of Public Health (CDPH) "Standard Method for the Test and Evaluation of Volatile Organic Chemical Emissions from Indoor Sources Using Environmental Chambers, Version 1.2 (2017)" (also known as California Section 01350).

Office Furniture products that are GREENGUARD Gold Certified are also compliant with the BIFMA X7.1 standard and BIFMA e3 credits 7.6.1, 7.6.2, and 7.6.3.

PIPELINE 1010

Fabrics » Woven Fabrics

Fire Rating Tested in accordance with AS1530.3
Spread of Flame Index - 0
Smoke Developed Index - 5

Warranty 2-year warranty. Visit baresque.com.au/warranty for complete details.

Lead Time • 2-weeks (approx.) from Wednesday, subject to stock availability.
• Additional 1-week for Western Australia.
• Express delivery is available subject to a surcharge. Contact Baresque for details and pricing.

Care Instructions One of the best ways to keep fabrics looking good is to brush off dirt before it becomes embedded in the fabrics and wipe up spills or clean soon after a stain occurs. The quicker you clean spills and stains, the easier they can be to remove.

Avoid scrubbing or any other abrasive cleaning method. Never use stiff bristles or wire brushes, as they may damage the fabric.

Wipe material with a clean, soft cloth dampened with a mild solution of liquid detergent and warm water.

Repeat using only clean water, then dry with a lint free cloth or air dry.

Avoid using wax polishes, solvents or concentrated abrasives.

For more difficult stains, dampen a soft white cloth with a solution of household bleach (10% bleach / 90% water). Rub gently. Rinse with a water dampened cloth to remove bleach concentration.

Always test in an inconspicuous area first.

If care instructions don't deliver the expected results, cease cleaning method immediately and contact Baresque for assistance.

PIPELINE 1010

Fabrics » Woven Fabrics

Colour & Finish Options