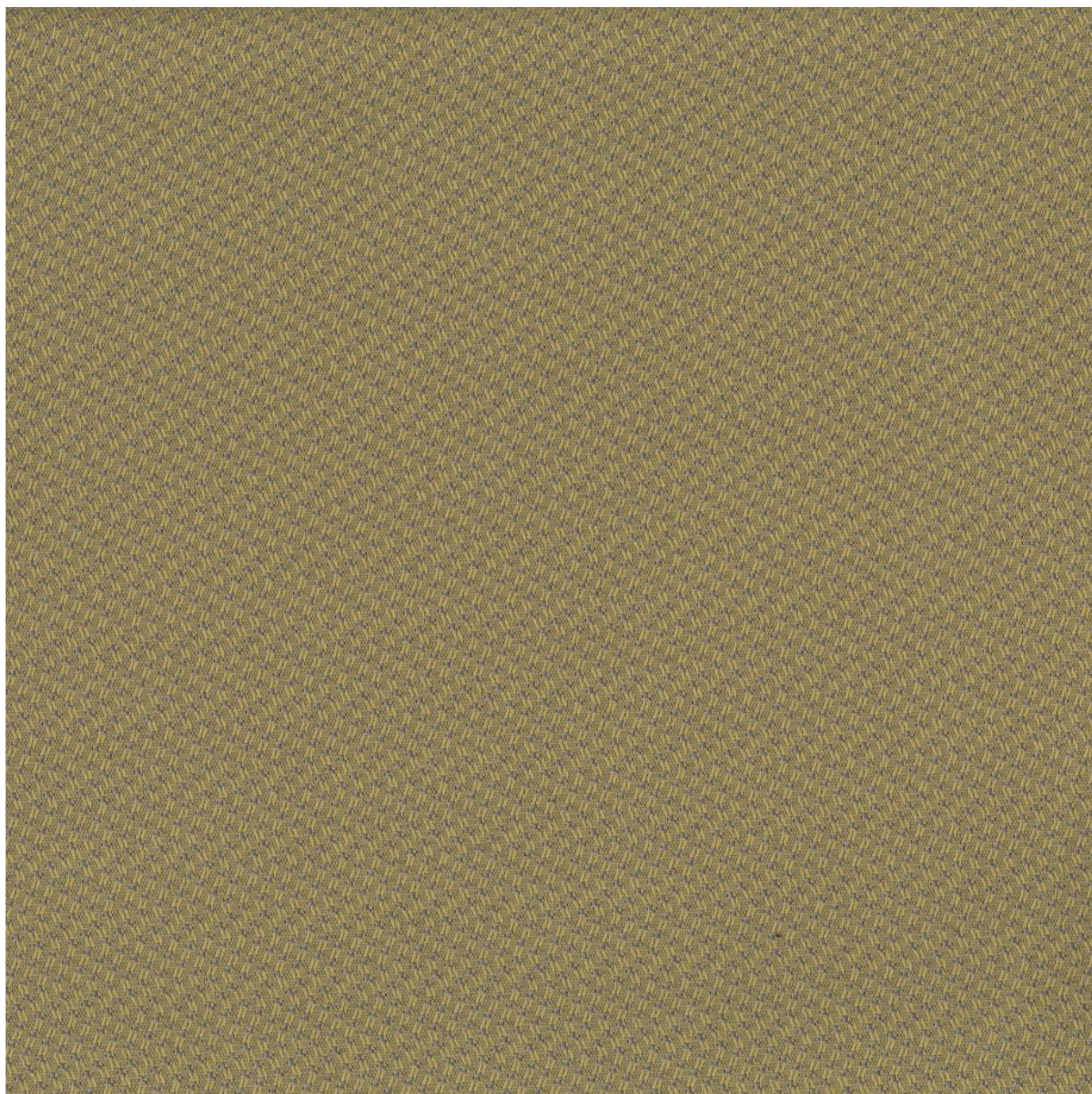


# PRAIRIE TRAILBLAZER

Fabrics » Woven Fabrics

---



Brand: **Crypton**

Collection: **Trailblazer**

1300 306 399

[info@baresque.com.au](mailto:info@baresque.com.au)

[baresque.com.au](http://baresque.com.au)

1 of 5

# PRAIRIE TRAILBLAZER

Fabrics » Woven Fabrics

---



14 SCARLET



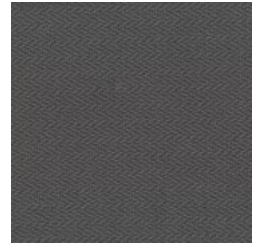
46 KOI



61 VANILLA



508 MAIZE



709 ONYX



903 SMOKE

# PRAIRIE TRAILBLAZER

Fabrics » Woven Fabrics

Prairie is a 140cm wide woven upholstery with a soft chevron pattern that's available in 6 colours. Suitable for indoor

✓ **Bleach Cleanable**

✓ **Moisture Barrier**

**Description** The Crypton Trailblazer collection features coordinating classic stripes and textures paired with playful patterns ideally suited to contemporary aged care and hospitality projects. Colors range from soft neutrals to classic primary shades with bright bold pops of color. Search Trailblazer for more designs. CRYPTON is a permanent moisture, soil resistance and anti-microbial protection backing.

**Roll Size** 140cm x Approx 45m - 55m - Available by the lineal metre.

**Composition** CRYPTON - 85% polyester, 15% recycled polyester

**Abrasion** 100,000+ Double Rubs (Wyzenbeek)

**Pattern Repeat Size** 1.5cm V / 1.5cm H

**Environmental Info** Greenguard Certifications contributes towards LEED credits for low-emitting furniture and ensures compliance with Business and Institutional Furniture Manufacturers Association (BIFMA) X7.1 standard and BIFMA e3 credit 7.6.1.

Greenguard Gold Certification standard includes:

\* Health-based criteria for additional chemicals and requires lower total VOC emissions levels to help ensure that products are acceptable for use in environments like schools and healthcare facilities.

\* Products that also comply with requirements of the state of California's Department of Public Health (CDPH) "Standard Method for the Test and Evaluation of Volatile Organic Chemical Emissions from Indoor Sources Using Environmental Chambers, Version 1.2 (2017)" (also know as California Section 01350).

\* Products that are compliant with the BIFMA X7.1 standard and BIFMA e3 credits 7.6.1, 7.6.2, and 7.6.3.

**Fire Rating** This product can be treated with a fire retardant that will ensure it meets Australian Standard 1530.3. Contact Baresque for details.

**Warranty** 2-year warranty. Visit [baresque.com.au/warranty](https://www.baresque.com.au/warranty) for complete details.

# PRAIRIE TRAILBLAZER

Fabrics » Woven Fabrics

---

## Lead Time

- 2-weeks (approx.) from Wednesday, subject to stock availability.
  - Additional 1-week for Western Australia.
  - Express delivery is available subject to a surcharge. Contact Baresque for details and pricing.
- 

## Care Instructions

Always use a clean, white, soft cloth.

Prepare a mixture of 1/3 Napisan and 2/3 Fab. Combine the mixture with water to make a paste about the consistency of soft margarine i.e. not too runny. Apply using a soft bristle brush. Leave for 10 minutes.

Use a brush and clean, warm water to remove the paste being sure to renew the water so that it remains clean.

Never use stiff bristles or wire brushes, as they may damage the fabric. To prevent soil build-up, frequent vacuuming is recommended.

Using a cloth to pat dry will help eliminate watermarks.

For more difficult stains, dampen a soft white cloth with a solution of household bleach (10% bleach / 90% water). Rub gently. Rinse with a water dampened cloth to remove bleach concentration.

Always test in an inconspicuous area first. If care instructions don't deliver the expected results, cease cleaning method immediately and contact Baresque for assistance.

---

# PRAIRIE TRAILBLAZER

Fabrics » Woven Fabrics

---

## Colour & Finish Options