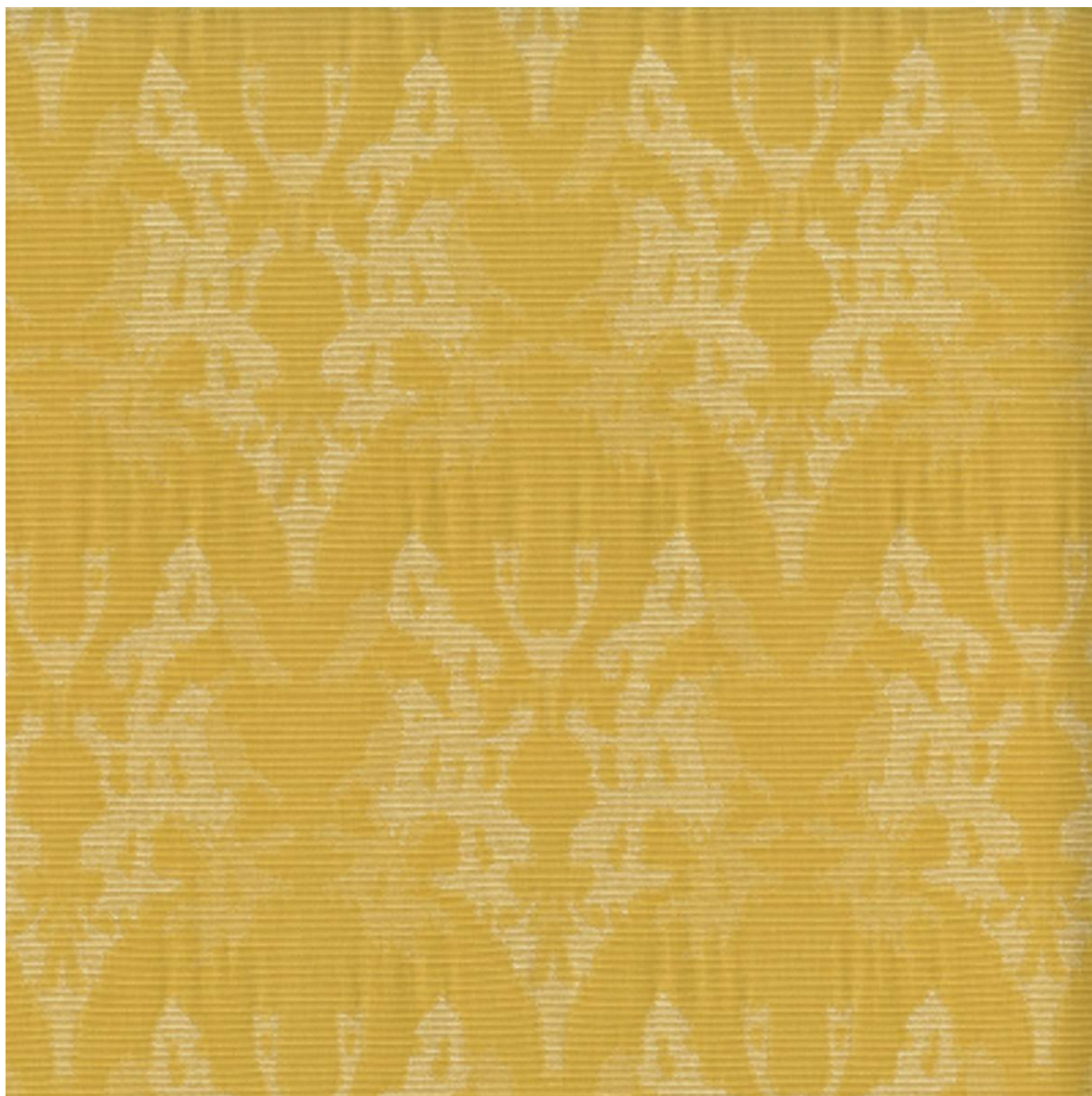


STIMULATE EXCELLENCE

Fabrics » Woven Fabrics



Brand: **Crypton**

Collection: **Excellence**

1300 306 399

info@baresque.com.au

baresque.com.au

1 of 5

STIMULATE EXCELLENCE

Fabrics » Woven Fabrics



17 AUBURN



205 SPRIG



37 LAGOON



44 PUMPKIN



51 YELLOW



608 LINEN



81 SANDLEWOOD



9009 BLACK



908 CHARCOAL



305

STIMULATE EXCELLENCE

Fabrics » Woven Fabrics

Stimulate is a 142cm wide woven upholstery with a soft damask pattern that's available in 10 colourways. Suitable for indoors.

✓ **Bleach Cleanable**

✓ **Moisture Barrier**

Description	CRYPTON is a permanent moisture, soil resistance and anti-microbial protection backing.
Roll Size	142cm x Approx 45m - 55m - Available by the lineal metre
Composition	CRYPTON - 23% cotton / 45% polyester / 20% recycled post consumer polyester / 12% recycled post industrial polyester
Abrasion	50,000+ Double Rubs (Wyzenbeek)
Pattern Repeat Size	10.2cm V / 7.5cm H
Fire Rating	This product can be treated with a fire retardant that will ensure it meets Australian Standard 1530.3. Contact Baresque for details.
Warranty	2-year warranty. Visit baresque.com.au/warranty for complete details.
Lead Time	<ul style="list-style-type: none">• 2-weeks (approx.) from Wednesday, subject to stock availability.• Additional 1-week for Western Australia.• Express delivery is available subject to a surcharge. Contact Baresque for details and pricing.

STIMULATE EXCELLENCE

Fabrics » Woven Fabrics

Care Instructions

Always use a clean, white, soft cloth.

Prepare a mixture of 1/3 Napisan and 2/3 Fab. Combine the mixture with water to make a paste about the consistency of soft margarine i.e. not too runny. Apply using a soft bristle brush. Leave for 10 minutes.

Use a brush and clean, warm water to remove the paste being sure to renew the water so that it remains clean.

Never use stiff bristles or wire brushes, as they may damage the fabric. To prevent soil build-up, frequent vacuuming is recommended.

Using a cloth to pat dry will help eliminate watermarks.

For more difficult stains, dampen a soft white cloth with a solution of household bleach (10% bleach / 90% water). Rub gently. Rinse with a water dampened cloth to remove bleach concentration.

Always test in an inconspicuous area first. If care instructions don't deliver the expected results, cease cleaning method immediately and contact Baresque for assistance.

STIMULATE EXCELLENCE

Fabrics » Woven Fabrics

Colour & Finish Options