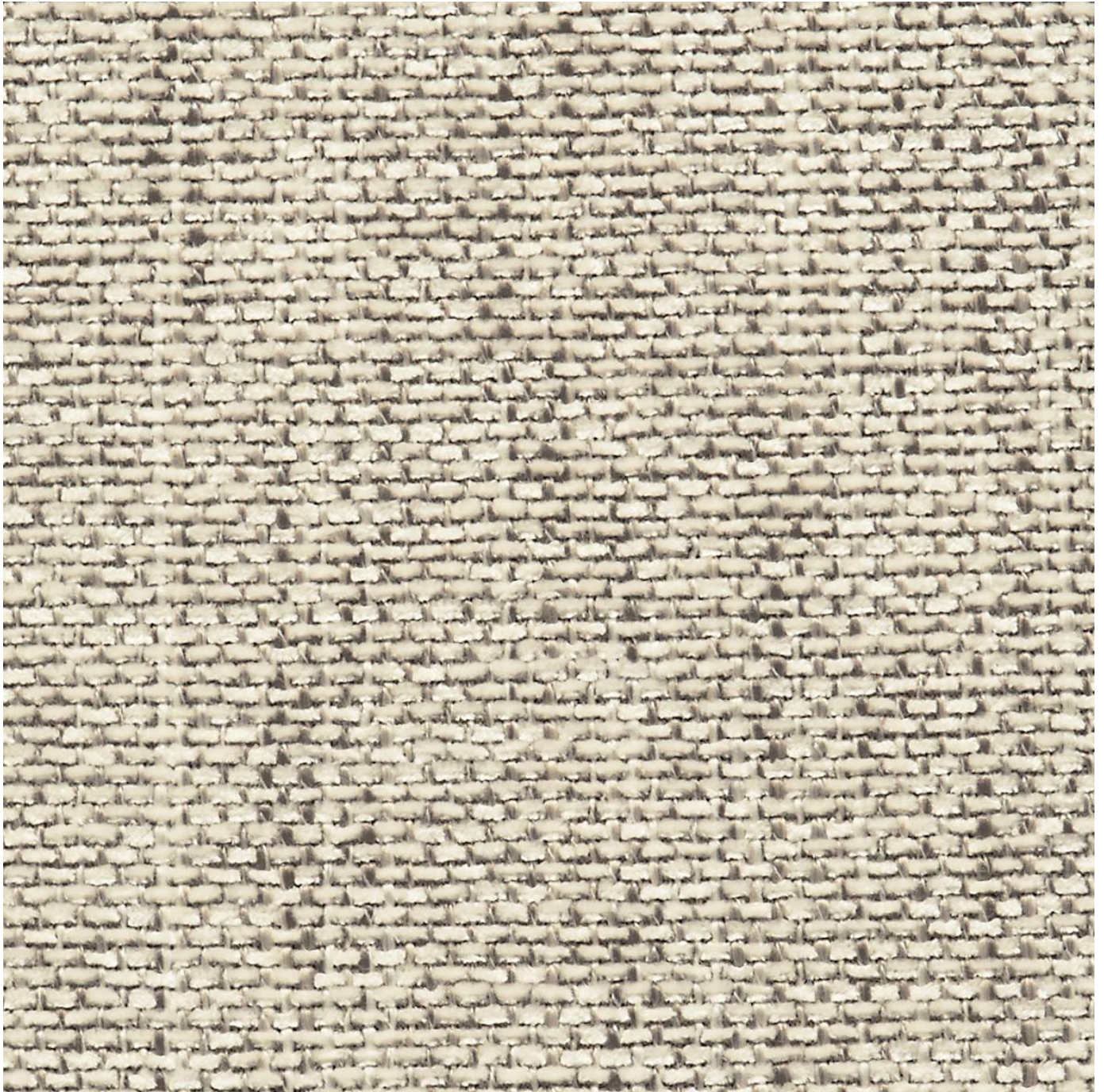


# SYLLABUS

Fabrics » Woven Fabrics

---



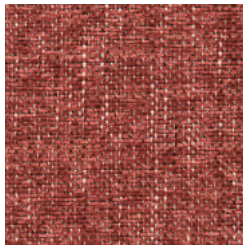
Brand: **Crypton**

# SYLLABUS

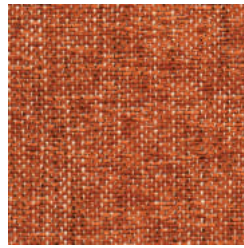
Fabrics » Woven Fabrics



1009937 ROSE



1009938 POPPY



1009939 CARROT



1009940 LEMON



1009941 GRASS



1009942 SPA



1009943 SKY



1009944 PACIFIC



1009945 COBALT



1009946 NIGHT



1009947 STEEL



1009948 PEBBLE



1009949 BEACH



1009950 LINEN



1009951 SALT



1009952 FLAX



syllabus\_promo2.jpg



syllabus\_promo1.jpg

# SYLLABUS

Fabrics » Woven Fabrics

Syllabus is a 137cm wide woven upholstery nubby chenille with a soft striking surface texture that's available in 16 colourways.

Description	Syllabus is a nubby chenille with a soft striking surface texture. Available in sixteen fresh and current colourways. CRYPTON is a permanent moisture, soil resistance and anti-microbial protection backing.
Roll Size	137cm x Approx 45m - Available by the lineal metre
Composition	CRYPTON - 84% polyester, 12% cotton, 4% acrylic
Abrasion	50,000+ Double Rubs (Wyzenbeek)
Pattern Repeat Size	N/A
Fire Rating	This product can be treated with a fire retardant that will ensure it meets Australian Standard 1530.3. Contact Baresque for details.
Warranty	2-year warranty. Visit <a href="https://baresque.com.au/warranty">baresque.com.au/warranty</a> for complete details.
Lead Time	<ul style="list-style-type: none"><li>• 2-weeks (approx.) from Wednesday, subject to stock availability.</li><li>• Additional 1-week for Western Australia.</li><li>• Express delivery is available subject to a surcharge. Contact Baresque for details and pricing.</li></ul>

# SYLLABUS

Fabrics » Woven Fabrics

---

## Care Instructions

Always use a clean, white, soft cloth.

Prepare a mixture of 1/3 Napisan and 2/3 Fab. Combine the mixture with water to make a paste about the consistency of soft margarine i.e. not too runny. Apply using a soft bristle brush. Leave for 10 minutes.

Use a brush and clean, warm water to remove the paste being sure to renew the water so that it remains clean.

Never use stiff bristles or wire brushes, as they may damage the fabric. To prevent soil build-up, frequent vacuuming is recommended.

Using a cloth to pat dry will help eliminate watermarks.

For more difficult stains, dampen a soft white cloth with a solution of household bleach (10% bleach / 90% water). Rub gently. Rinse with a water dampened cloth to remove bleach concentration.

Always test in an inconspicuous area first. If care instructions don't deliver the expected results, cease cleaning method immediately and contact Baresque for assistance.

---

# SYLLABUS

Fabrics » Woven Fabrics

---

## Colour & Finish Options