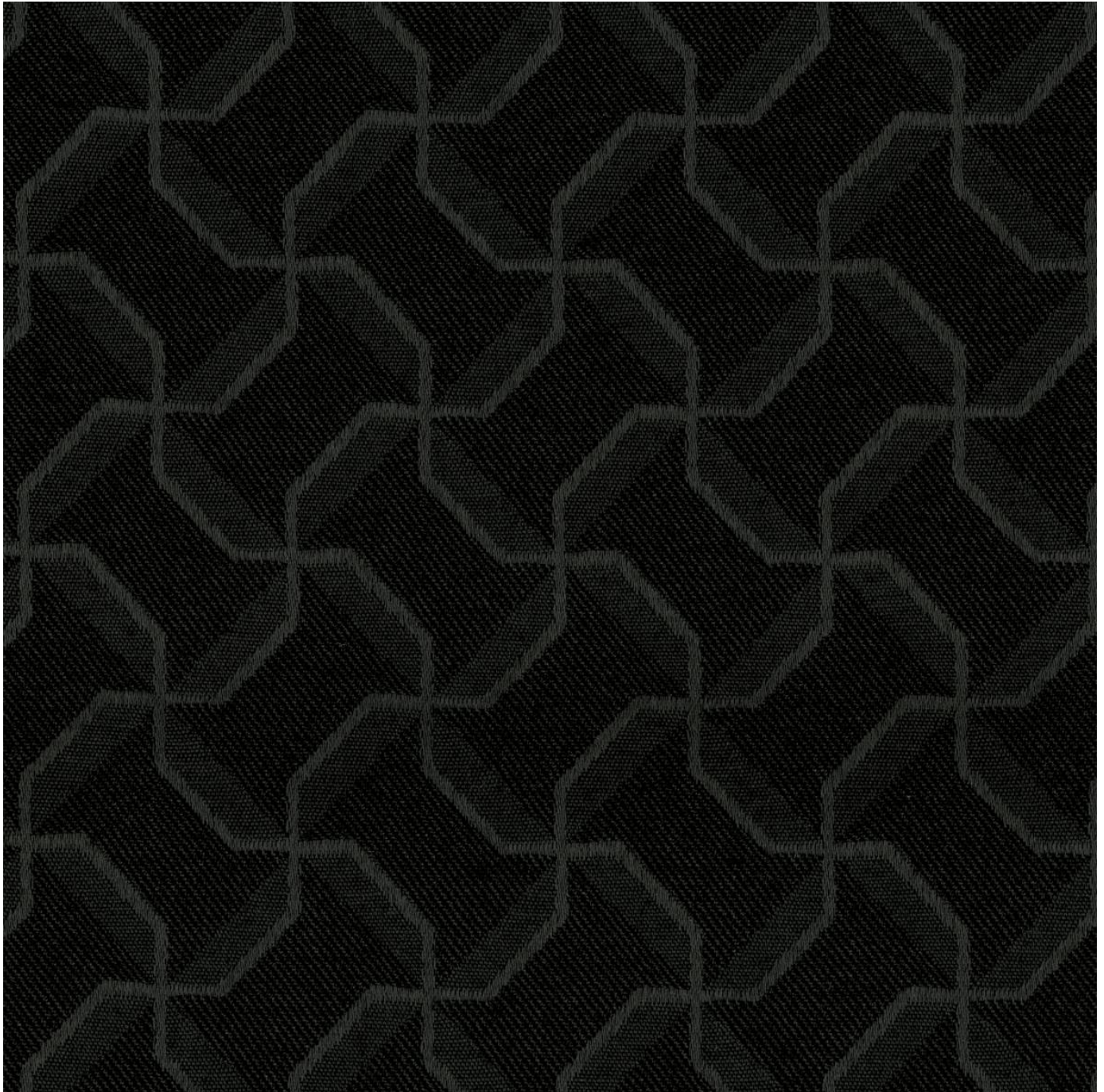


SYNC ADVENTURE

Fabrics » Woven Fabrics



Brand: **Crypton**

Collection: **Adventure**

1300 306 399

info@baresque.com.au

baresque.com.au

1 of 5

SYNC ADVENTURE

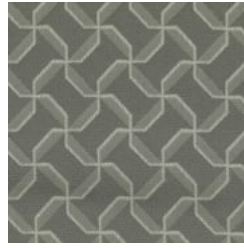
Fabrics » Woven Fabrics



3009 MIDNIGHT BLUE



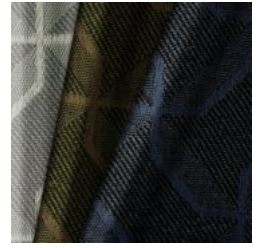
87 CHESTNUT



9003 SMOKE



9009 BLACK



sync-
adventure_promo-1.jpg

SYNC ADVENTURE

Fabrics » Woven Fabrics

Sync is a 140cm wide woven upholstery with a geometric gridlock styled pattern that's available in 4 colours. Suitable for indoors.

✓ **Bleach Cleanable**

✓ **Moisture Barrier**

Description	CRYPTON is a permanent moisture, soil resistance and anti-microbial protection backing.
Roll Size	140cm x Approx 45m - 55m - Available by the lineal metre.
Composition	CRYPTON - 100% polyester
Abrasion	75,000+ double rubs Wyzenbeek
Pattern Repeat Size	5.1cm V / 4.7cm H
Fire Rating	This product can be treated with a fire retardant that will ensure it meets Australian Standard 1530.3. Contact Baresque for details.
Warranty	2-year warranty. Visit baresque.com.au/warranty for complete details.
Lead Time	<ul style="list-style-type: none">• 2-weeks (approx.) from Wednesday, subject to stock availability.• Additional 1-week for Western Australia.• Express delivery is available subject to a surcharge. Contact Baresque for details and pricing.

SYNC ADVENTURE

Fabrics » Woven Fabrics

Care Instructions

Always use a clean, white, soft cloth.

Prepare a mixture of 1/3 Napisan and 2/3 Fab. Combine the mixture with water to make a paste about the consistency of soft margarine i.e. not too runny. Apply using a soft bristle brush. Leave for 10 minutes.

Use a brush and clean, warm water to remove the paste being sure to renew the water so that it remains clean.

Never use stiff bristles or wire brushes, as they may damage the fabric. To prevent soil build-up, frequent vacuuming is recommended.

Using a cloth to pat dry will help eliminate watermarks.

For more difficult stains, dampen a soft white cloth with a solution of household bleach (10% bleach / 90% water). Rub gently. Rinse with a water dampened cloth to remove bleach concentration.

Always test in an inconspicuous area first. If care instructions don't deliver the expected results, cease cleaning method immediately and contact Baresque for assistance.

SYNC ADVENTURE

Fabrics » Woven Fabrics

Colour & Finish Options