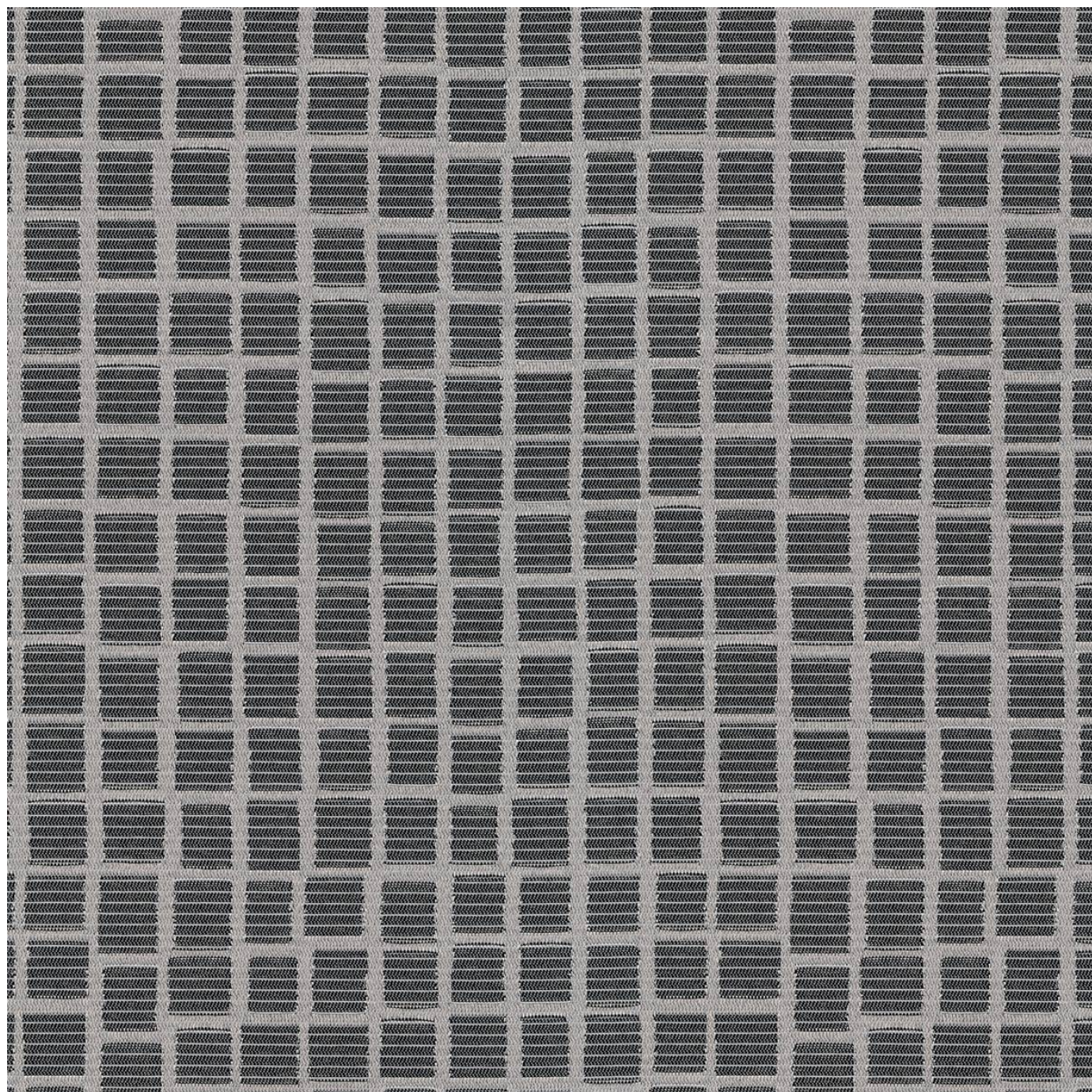


SYNDICATE

Fabrics » Woven Fabrics



Brand: **Crypton**

1300 306 399

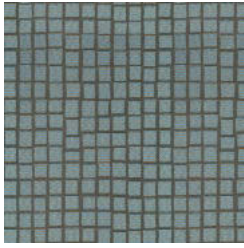
info@baresque.com.au

baresque.com.au

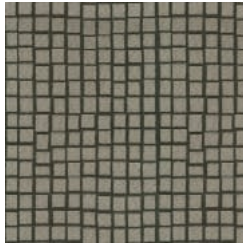
1 of 5

SYNDICATE

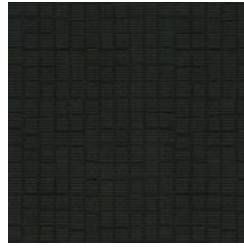
Fabrics » Woven Fabrics



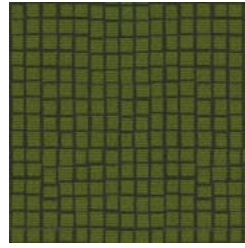
37 BLUE MOON



6009 CHINCHILLA



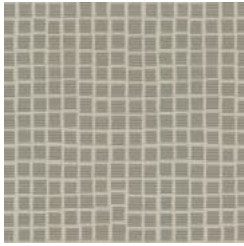
87 CIGAR



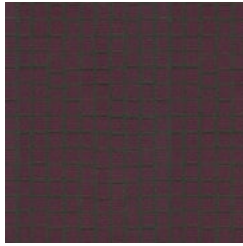
205 LIMELIGHT



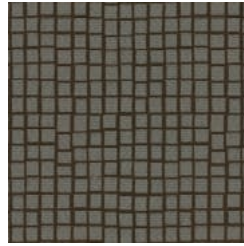
308 MOODY BLUE



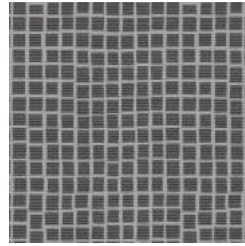
91 PLATINUM



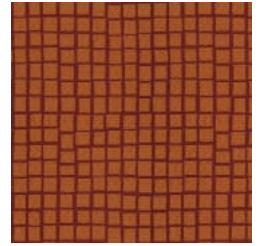
1009 SASSY PLUM



89 SMOKEY QUARTZ



97 STERLING



17 SUNSET



syndicate_promo-1.jpg

SYNDICATE

Fabrics » Woven Fabrics

Syndicate is a 142cm wide woven upholstery with an organic grid pattern that's available in 10 colourways. Suitable for indoors.

✓ **Bleach Cleanable**

✓ **Moisture Barrier**

Description CRYPTON is a permanent moisture, soil resistance and anti-microbial protection backing.

Roll Size 142cm x Approx 45m - 55m - Available by the lineal metre

Composition CRYPTON - 100% polyester (recycled)

Abrasion 75,000+ double rubs Wyzenbeek

Pattern Repeat Size 30cm V / 19.4cm H

Fire Rating This product can be treated with a fire retardant that will ensure it meets Australian Standard 1530.3. Contact Baresque for details.

Warranty 2-year warranty. Visit baresque.com.au/warranty for complete details.

Lead Time

- 2-weeks (approx.) from Wednesday, subject to stock availability.
- Additional 1-week for Western Australia.
- Express delivery is available subject to a surcharge. Contact Baresque for details and pricing.

SYNDICATE

Fabrics » Woven Fabrics

Care Instructions

Always use a clean, white, soft cloth.

Prepare a mixture of 1/3 Napisan and 2/3 Fab. Combine the mixture with water to make a paste about the consistency of soft margarine i.e. not too runny. Apply using a soft bristle brush. Leave for 10 minutes.

Use a brush and clean, warm water to remove the paste being sure to renew the water so that it remains clean.

Never use stiff bristles or wire brushes, as they may damage the fabric. To prevent soil build-up, frequent vacuuming is recommended.

Using a cloth to pat dry will help eliminate watermarks.

For more difficult stains, dampen a soft white cloth with a solution of household bleach (10% bleach / 90% water). Rub gently. Rinse with a water dampened cloth to remove bleach concentration.

Always test in an inconspicuous area first. If care instructions don't deliver the expected results, cease cleaning method immediately and contact Baresque for assistance.

SYNDICATE

Fabrics » Woven Fabrics

Colour & Finish Options