

TAIPEI

Fabrics » Woven Fabrics



Brand: **Crypton**

1300 306 399

info@baresque.com.au

baresque.com.au

1 of 4

TAIPEI

Fabrics » Woven Fabrics



CW2140-02 PRAIRIE



CW2140-04 COCOA



CW2140-06 MINK



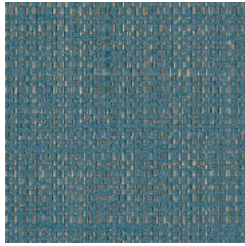
CW2140-08 CEDAR



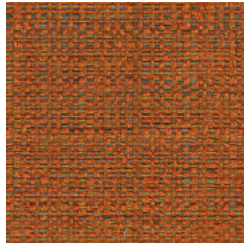
CW2140-09 PESTO



CW2140-10 STONE



CW2140-11
EVERGLADE



CW2140-14 CARROT



CW2140-15 RHUBARB



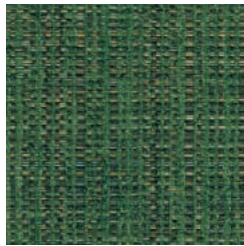
CW2140-16
CHARCOAL



CW2140-17 FLAX



CW2140-18
SANDSTONE



CW2140-19 ENVY

TAIPEI

Fabrics » Woven Fabrics

Taipei is a 137cm wide woven upholstery that's available in 14 colourways. Suitable for indoors.

Description	CRYPTON is a permanent moisture, soil resistance and anti-microbial protection backing.
Roll Size	137cm x 50m - Available by the lineal metre.
Composition	CRYPTON - 65% Rayon / 34% polyester / 1% Nylon
Abrasion	60,000 + double rubs Wyzenbeek
Pattern Repeat Size	N/A
Fire Rating	This product can be treated with a fire retardant that will ensure it meets Australian Standard 1530.3. Contact Baresque for details.
Warranty	2-year warranty. Visit baresque.com.au/warranty for complete details.
Lead Time	<ul style="list-style-type: none">• 2-weeks (approx.) from Wednesday, subject to stock availability.• Additional 1-week for Western Australia.• Express delivery is available subject to a surcharge. Contact Baresque for details and pricing.
Care Instructions	<p>Mix 5 parts water with 1 part of an enzyme laundry detergent to have a mixture that works well on all stains.</p> <p>Most liquid spills simply blot off the surface with a dry towel. If a stains remains, follow these simple steps:</p> <ol style="list-style-type: none">1. Remove excess soil, and apply the soap mixture on the stained area2. Allow solution to remain on stain for 1 minute3. Blot up the stain with a dry, clean towel, rinse any remaining soap and blot the area again <p>Repeat these steps if a spot still remains. If agitation is necessary, spray the stained area and work the stain using a soft brush or edge of spoon from outside of spot toward the middle. Blot and rinse to remove any soap.</p>

TAIPEI

Fabrics » Woven Fabrics

Colour & Finish Options