

# TWIGGY

Fabrics » Woven Fabrics



Brand: **Crypton**

# TWIGGY

Fabrics » Woven Fabrics

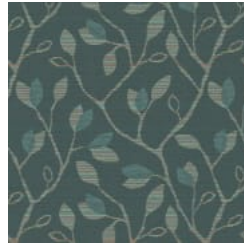
---



64765 OLIVE



64766 SAFFRON



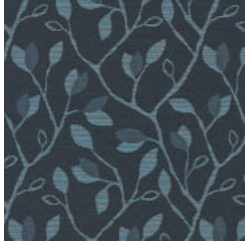
64767 OASIS



64768 CREST



64769 REDWOOD



64770 COVE



64771 RIVERBANK

# TWIGGY

Fabrics » Woven Fabrics

Twiggy is a 137cm wide woven upholstery with a leave frieze pattern that's available in 7 colourways. Suitable for indoors.

**Description** CRYPTON is a permanent moisture, soil resistance and anti-microbial protection backing.

**Roll Size** 137cm x Approx 50m - Available by the lineal metre

**Composition** CRYPTON - 55% polyester, 29% post industrial recycled polyester, 16% post consumer recycled polyester

**Abrasion** 50,000 + double rubs Wyzenbeek

**Pattern Repeat Size** 16.2cm V / 18cm H

**Environmental Info** Based on life cycle assessment principles, NSF/ANSI 336 employs an easy-to-use point system to evaluate furnishings fabric against established prerequisite requirements, performance criteria and quantifiable metrics in eight areas - Fiber Sourcing, Safety of Material, Water Conservation and Water Quality, Energy, Recycling Practices, Air Quality in Manufacturing, Social Accountability

Certification to NSF/ANSI 336 is based on point total achieve a Compliant, Silver, Gold or Platinum level.

**Fire Rating** This product can be treated with a fire retardant that will ensure it meets Australian Standard 1530.3. Contact Baresque for details.

**Warranty** 2-year warranty. Visit [baresque.com.au/warranty](https://www.baresque.com.au/warranty) for complete details.

**Lead Time**

- 2-weeks (approx.) from Wednesday, subject to stock availability.
- Additional 1-week for Western Australia.
- Express delivery is available subject to a surcharge. Contact Baresque for details and pricing.

# TWIGGY

Fabrics » Woven Fabrics

---

## Care Instructions

Mix 5 parts water with 1 part of an enzyme laundry detergent to have a mixture that works well on all stains.

Most liquid spills simply blot off the surface with a dry towel. If a stain remains, follow these simple steps:

1. Remove excess soil, and apply the soap mixture on the stained area
2. Allow solution to remain on stain for 1 minute
3. Blot up the stain with a dry, clean towel, rinse any remaining soap and blot the area again

Repeat these steps if a spot still remains. If agitation is necessary, spray the stained area and work the stain using a soft brush or edge of spoon from outside of spot toward the middle. Blot and rinse to remove any soap.

---

# TWIGGY

Fabrics » Woven Fabrics

---

## Colour & Finish Options